

Performance Indicators 2005

Fig. 1.1A

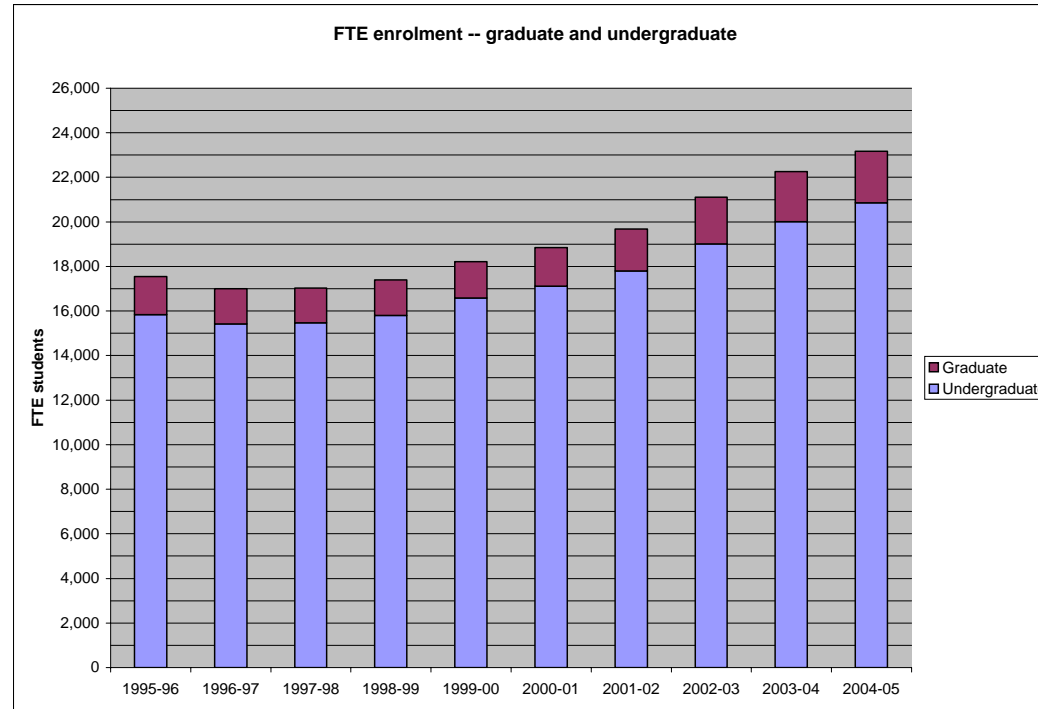


Fig. 1.1B

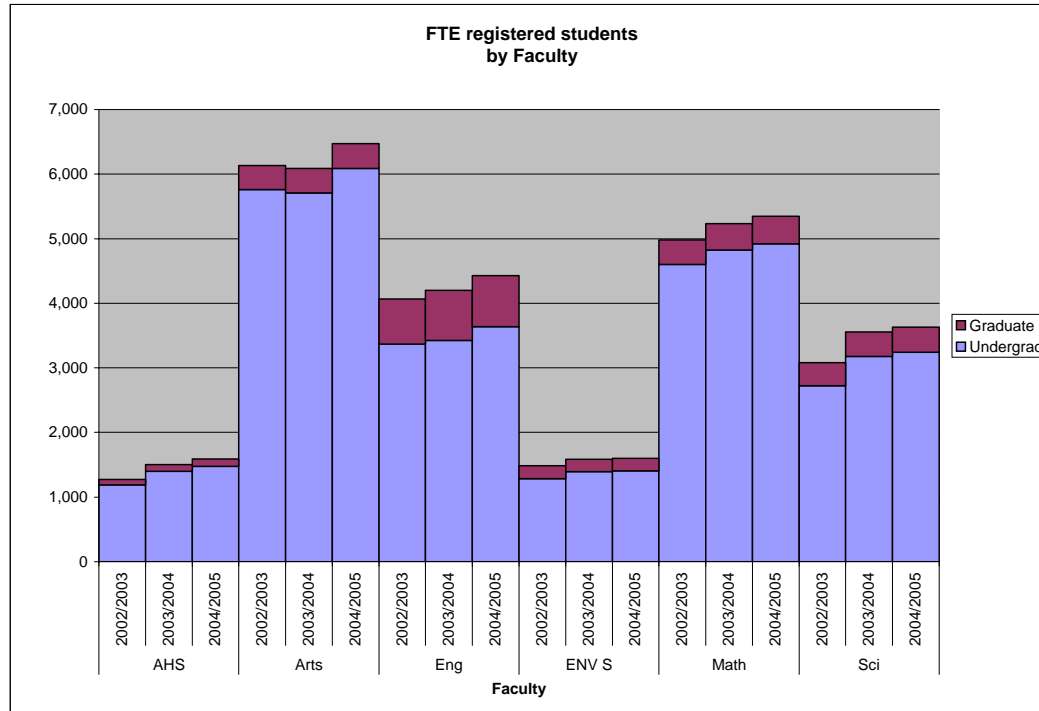


Fig. 1.1C

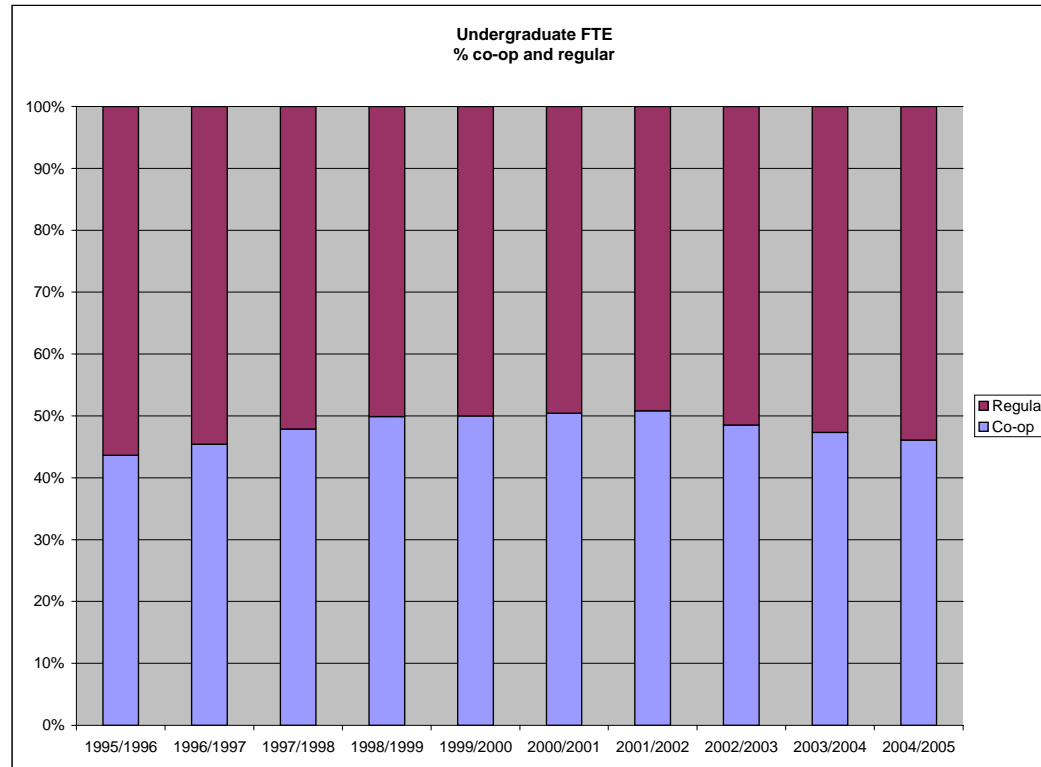


Fig. 1.1D

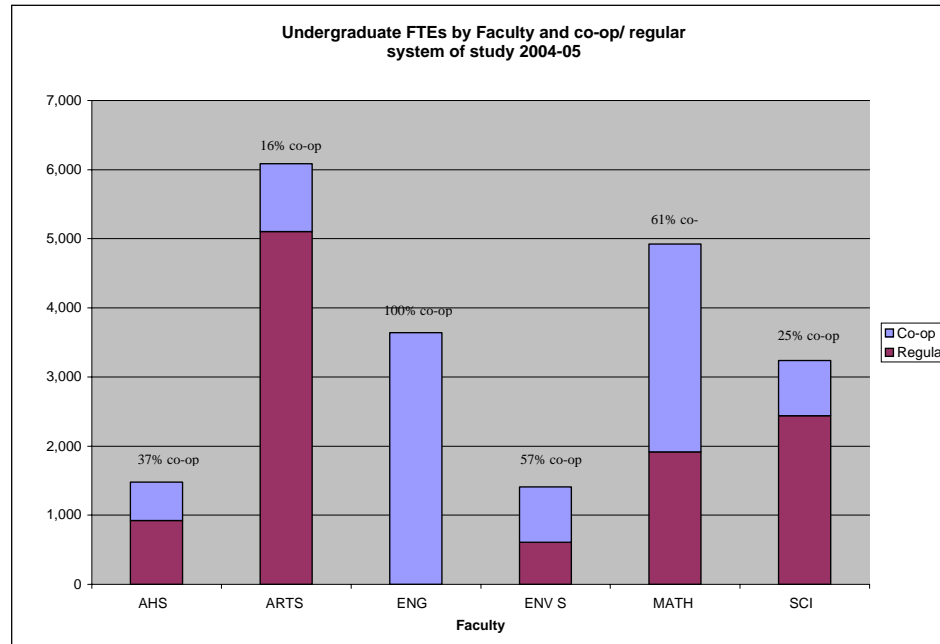


Fig. 1.1E

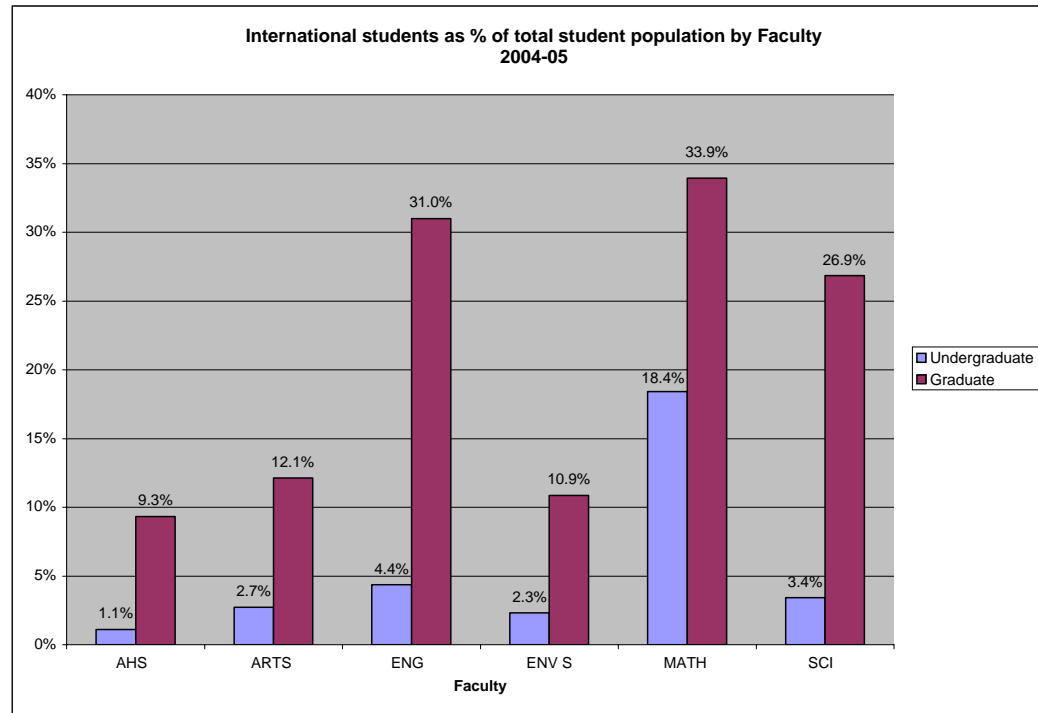


Fig. 1.2A

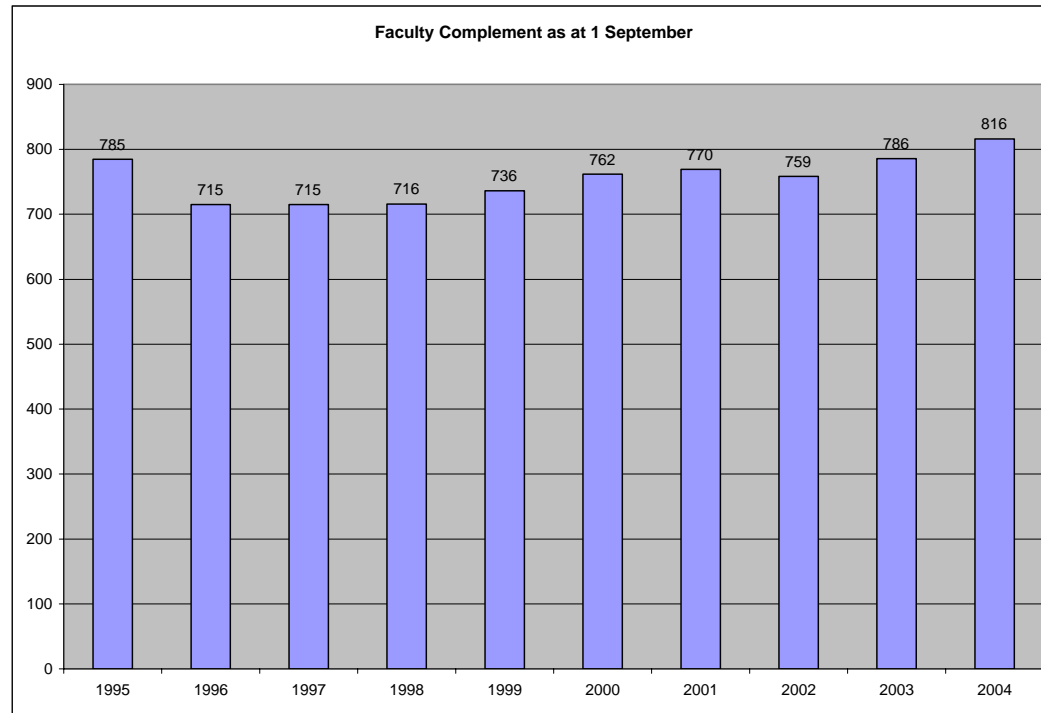


Fig. 1.2B

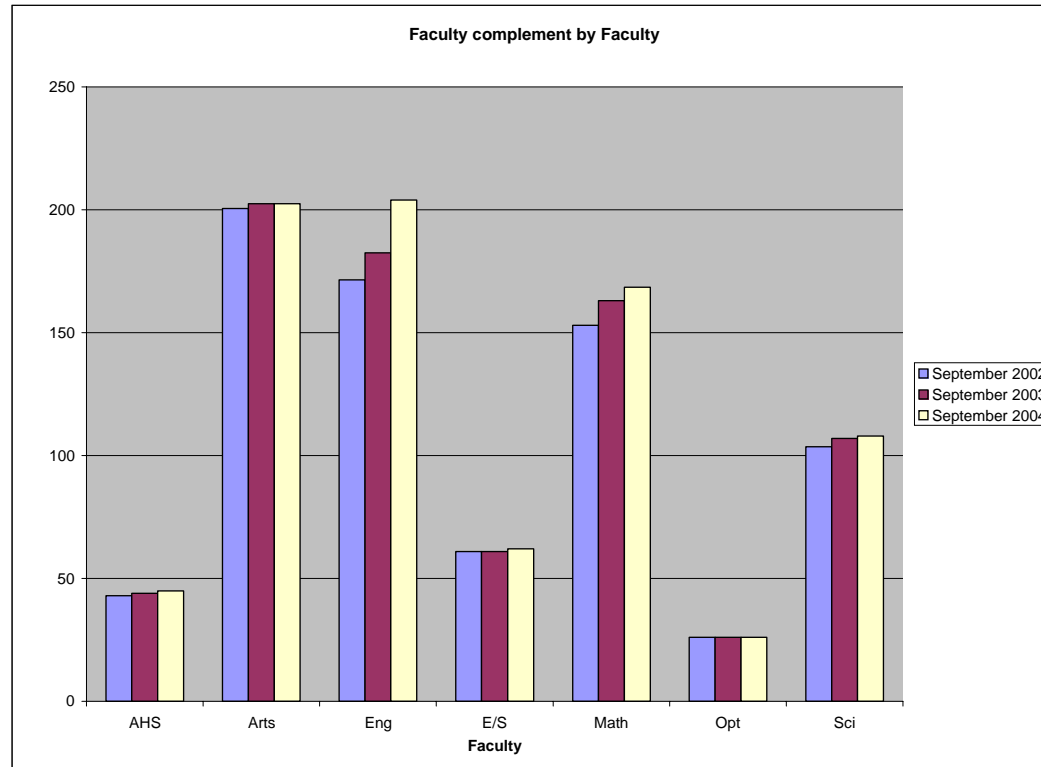


Fig. 1.2C

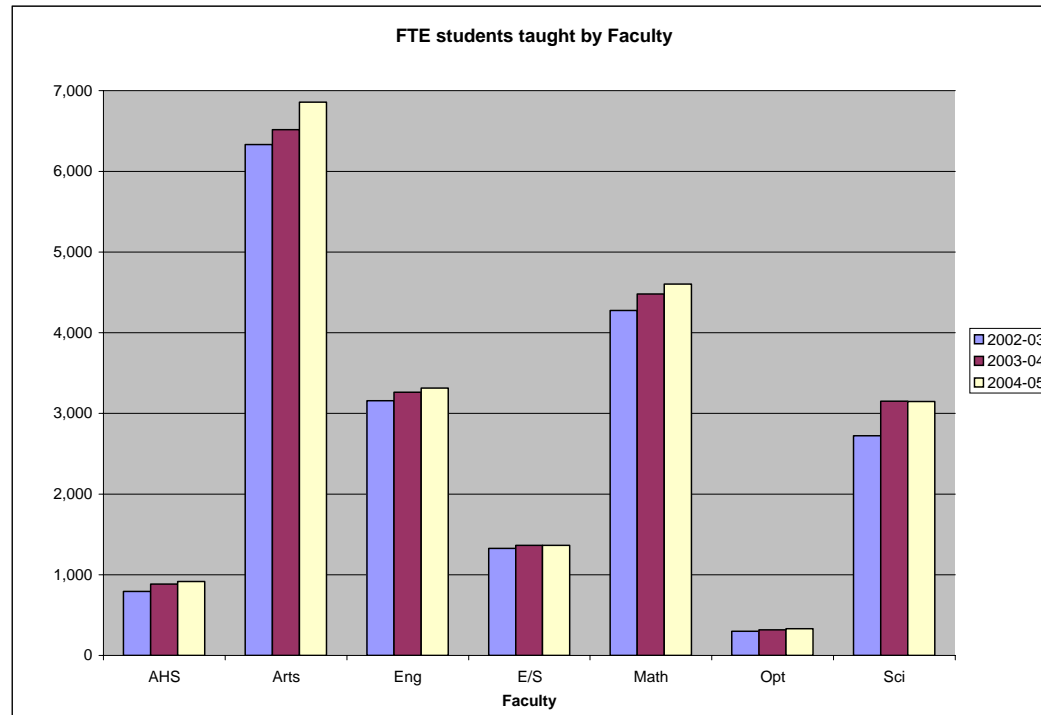


Fig. 1.2D

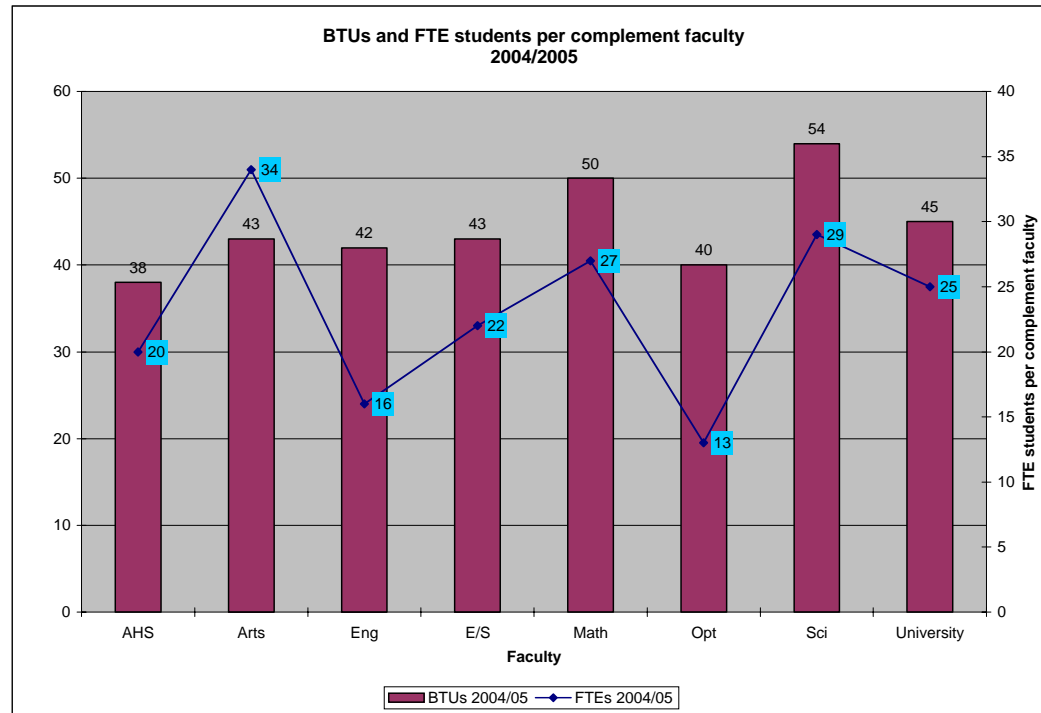


Fig. 1.2E

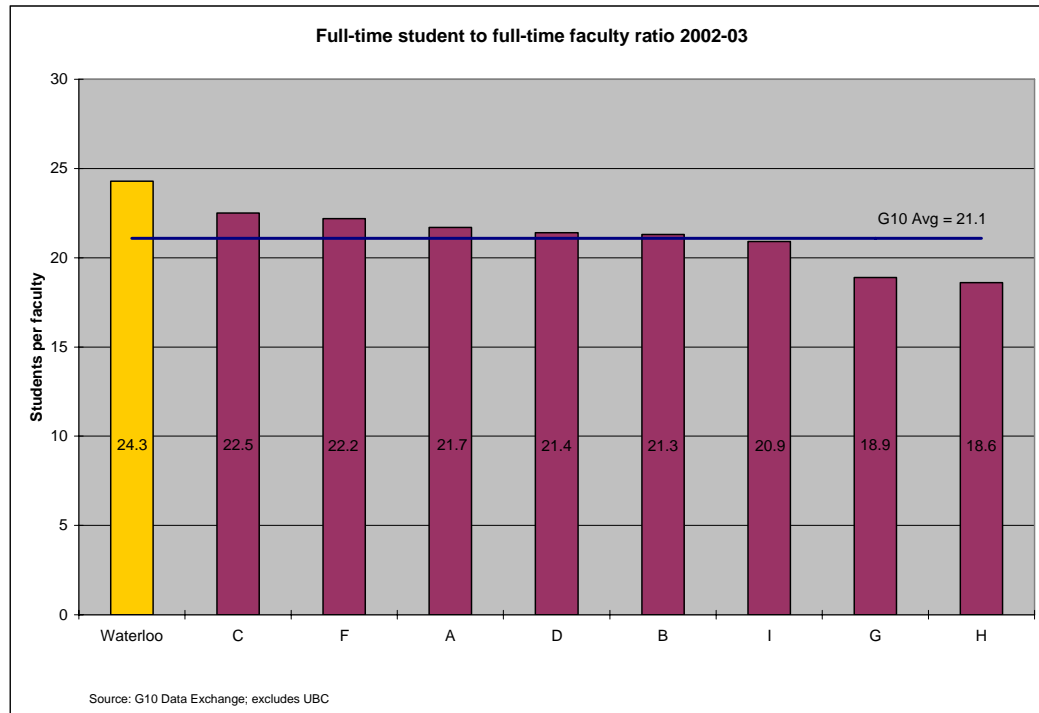


Fig. 1.2F

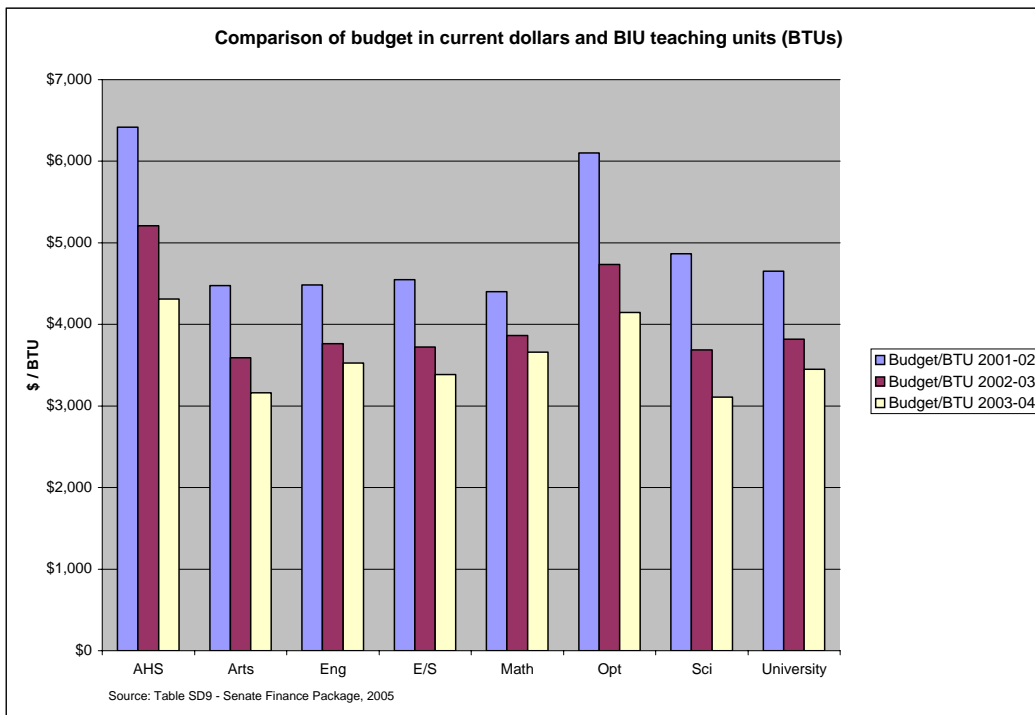


Fig. 1.3A

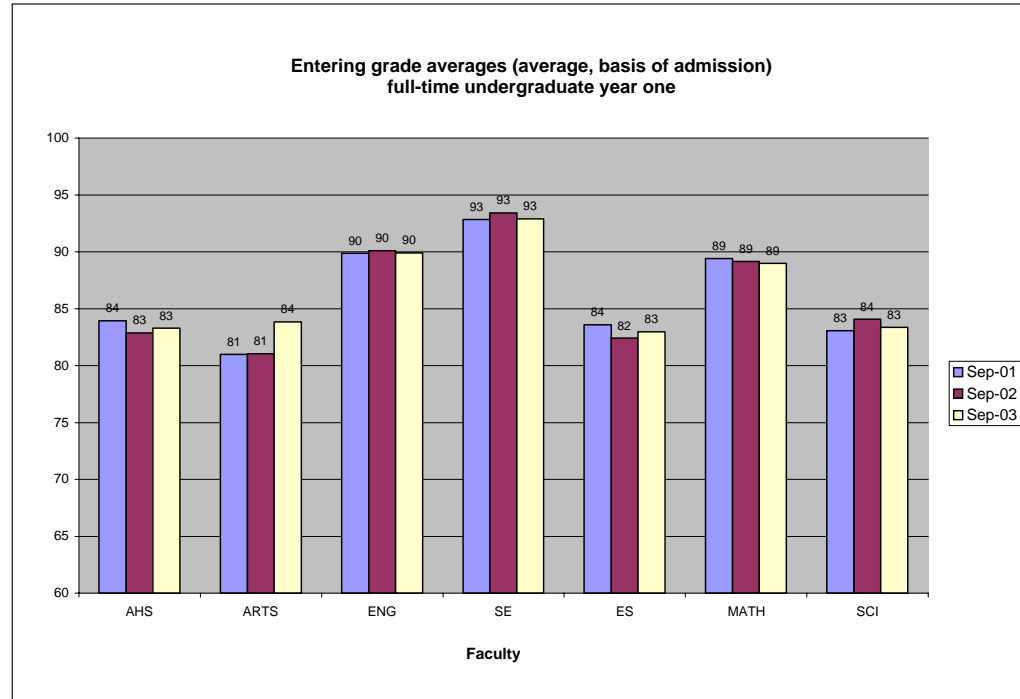


Fig. 1.3B

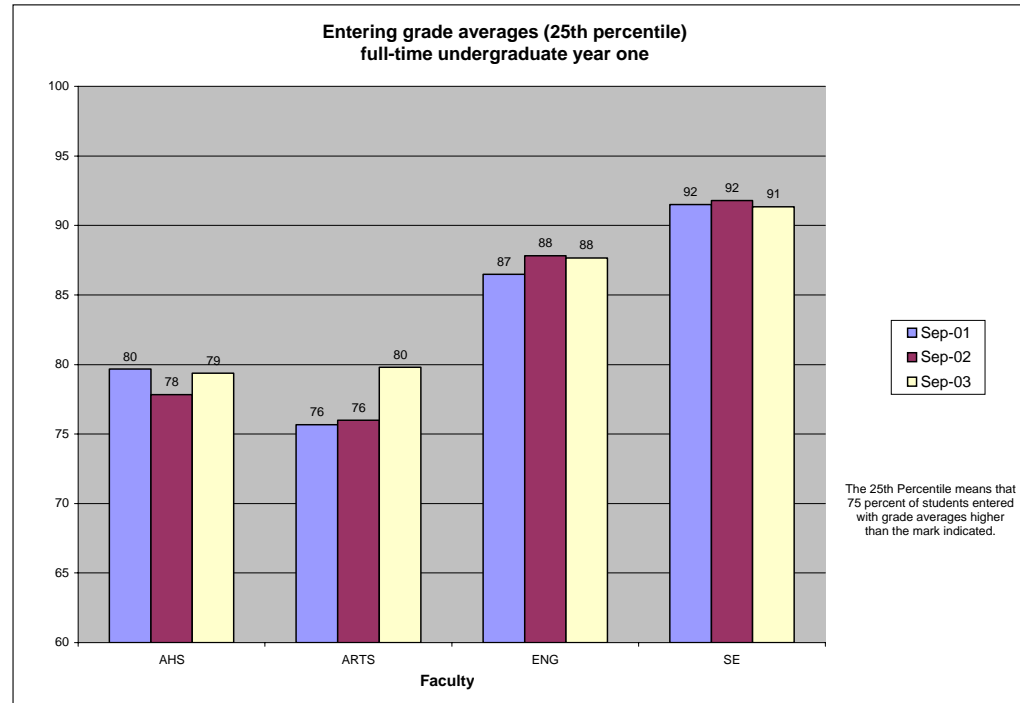


Fig. 1.3C

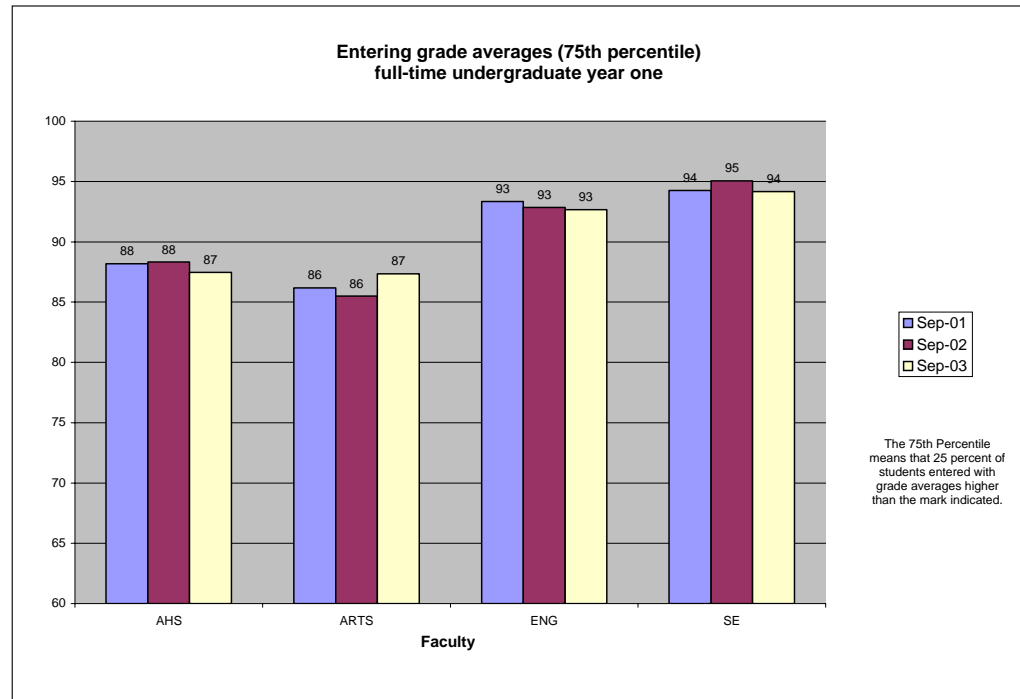


Fig. 1.3D

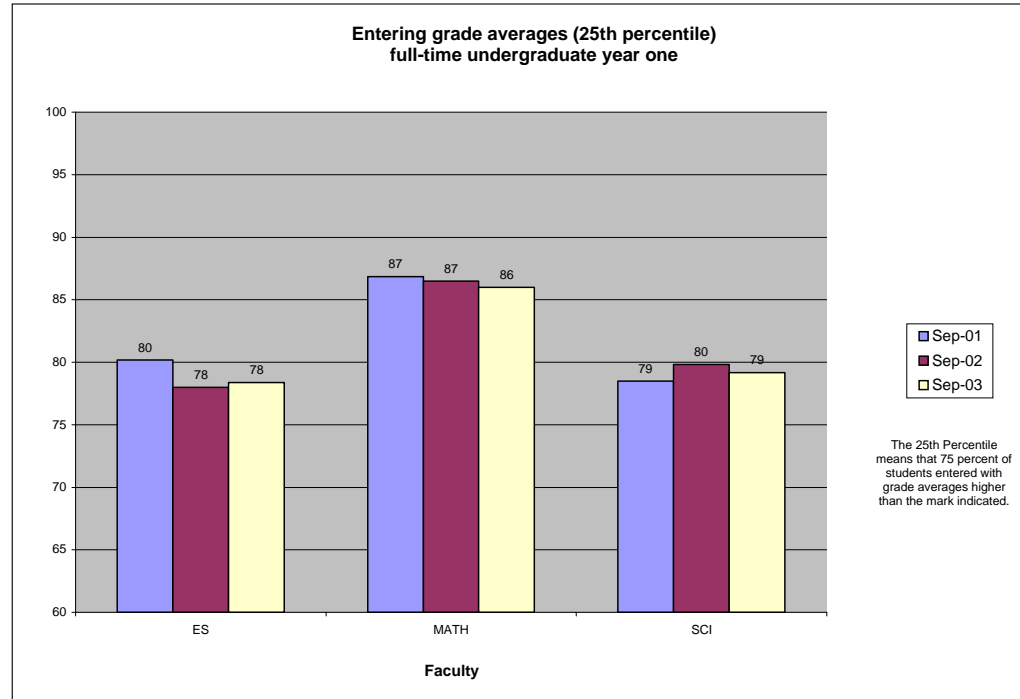


Fig. 1.3E

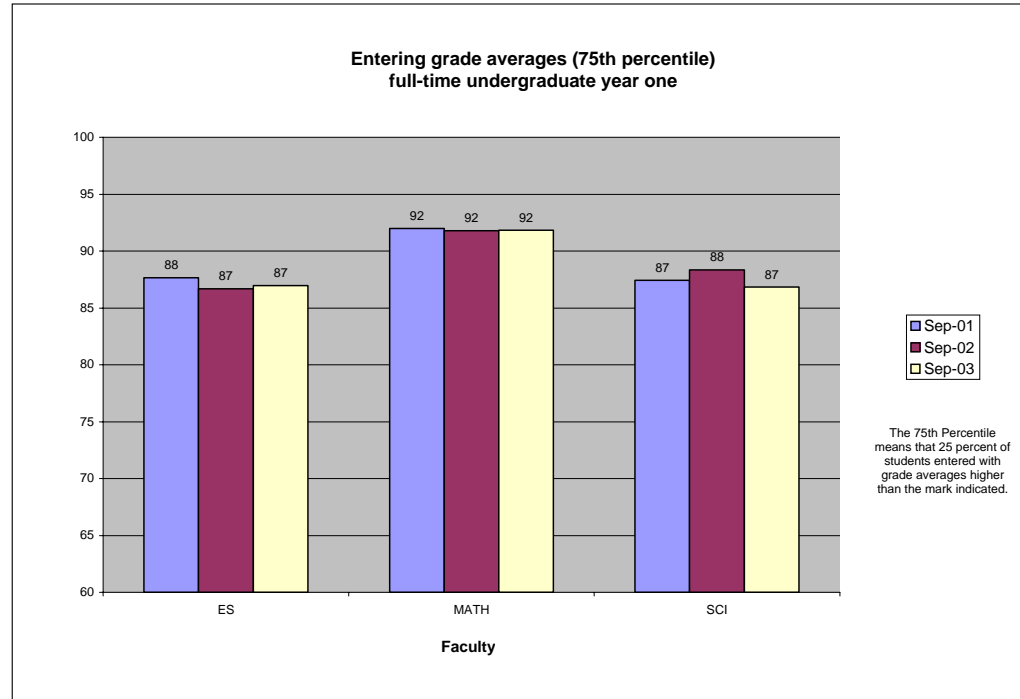


Fig. 1.4A

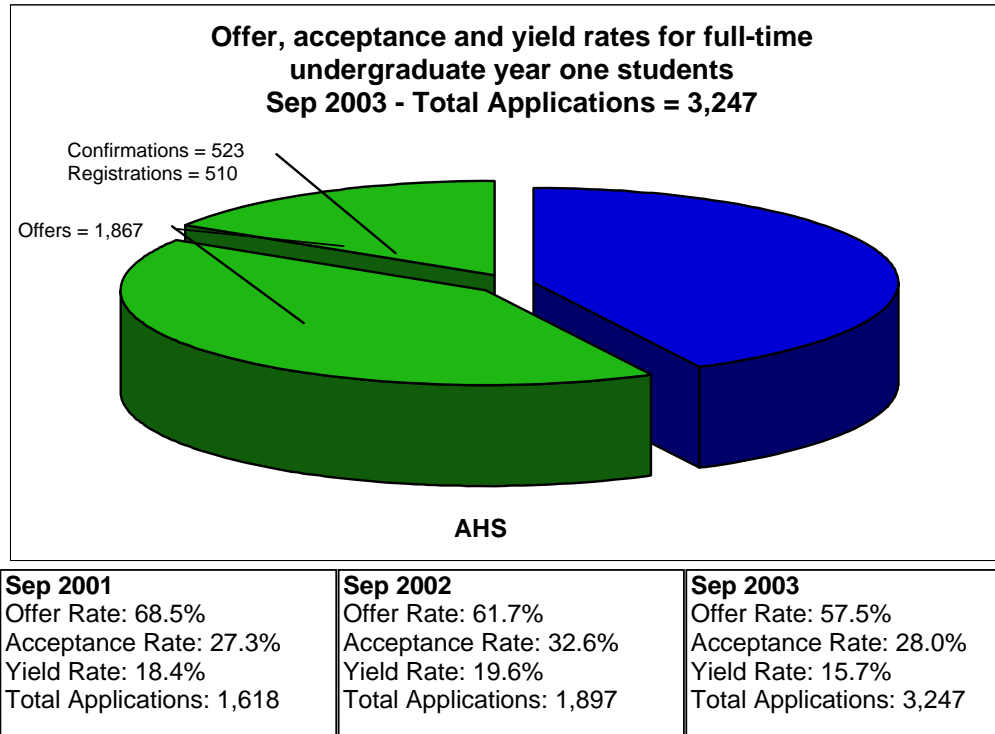


Fig. 1.4B

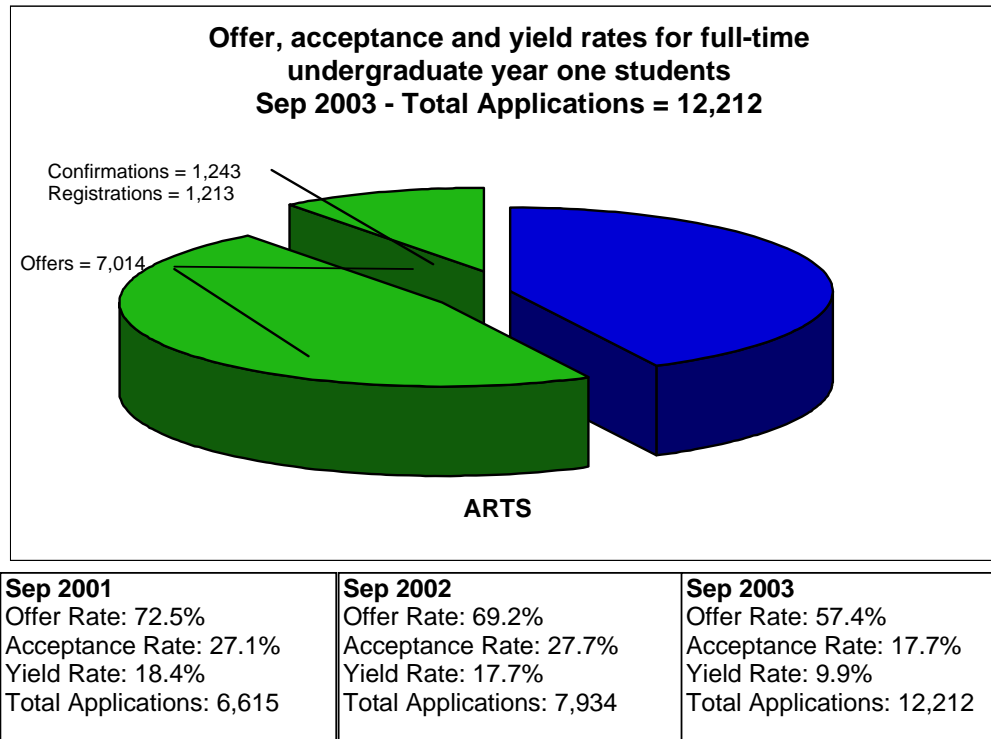
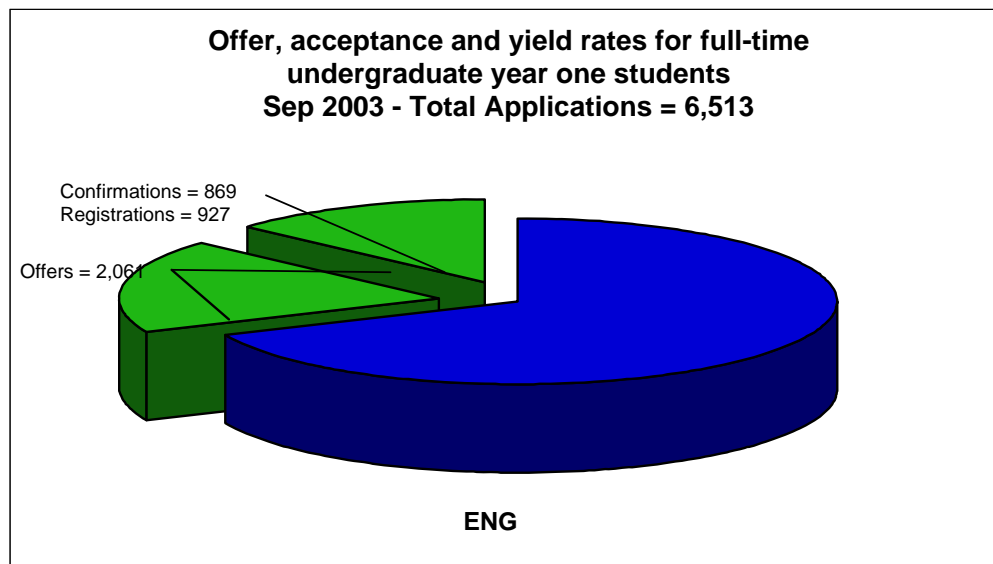
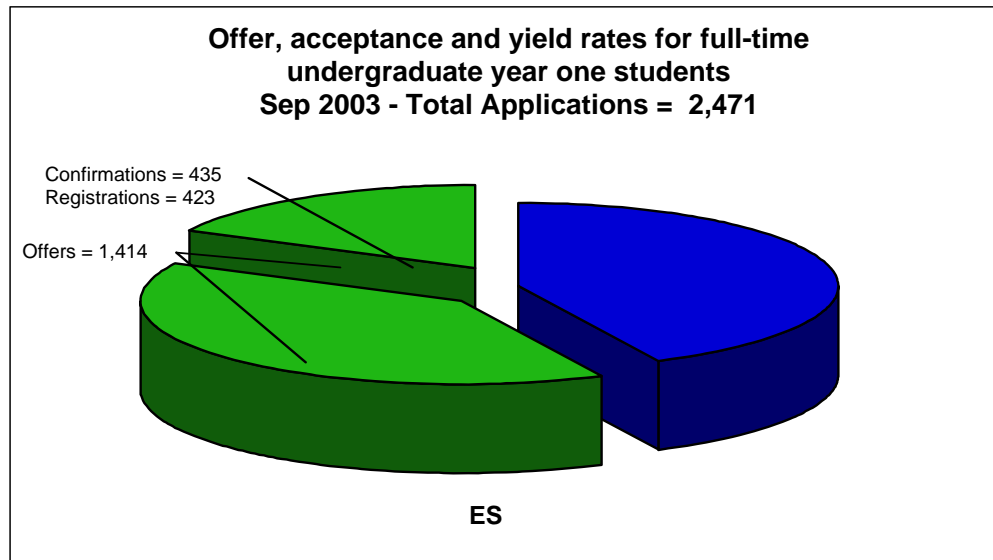


Fig. 1.4C



Sep 2001	Sep 2002	Sep 2003
Offer Rate: 46.6%	Offer Rate: 41.2%	Offer Rate: 31.6%
Acceptance Rate: 40.6%	Acceptance Rate: 41.6%	Acceptance Rate: 42.2%
Yield Rate: 18.1%	Yield Rate: 16.7%	Yield Rate: 14.2%
Total Applications: 4,120	Total Applications: 4,928	Total Applications: 6,513

Fig. 1.4D



Sep 2001	Sep 2002	Sep 2003
Offer Rate: 60.1%	Offer Rate: 60.2%	Offer Rate: 57.2%
Acceptance Rate: 36.1%	Acceptance Rate: 36.6%	Acceptance Rate: 30.8%
Yield Rate: 20.6%	Yield Rate: 21.2%	Yield Rate: 17.1%
Total Applications: 1,603	Total Applications: 1,659	Total Applications: 2,471

Fig. 1.4E

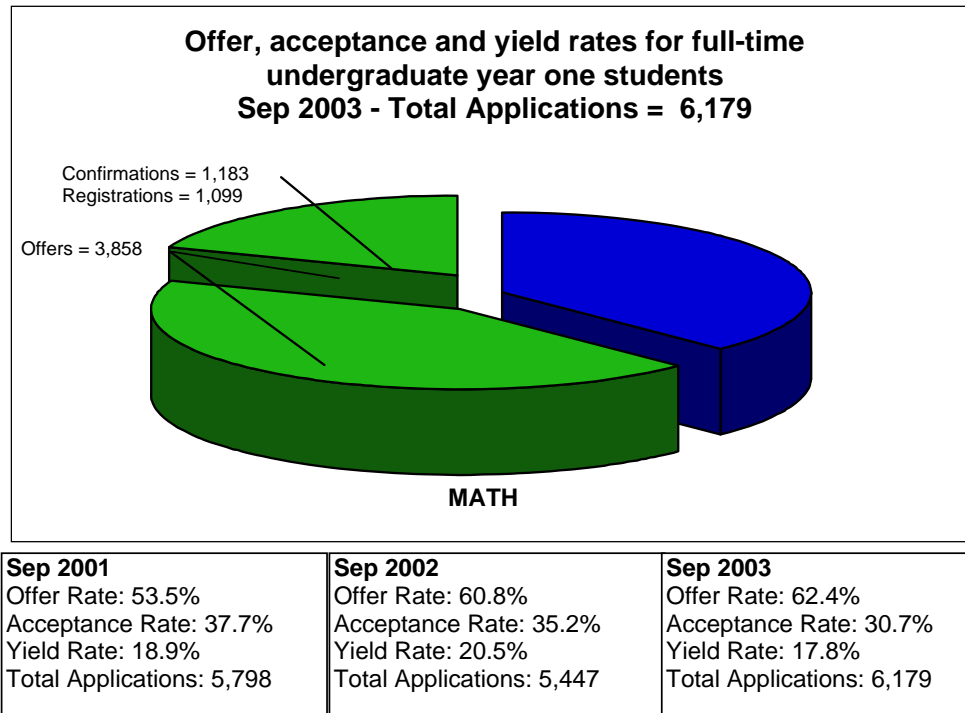


Fig. 1.4E

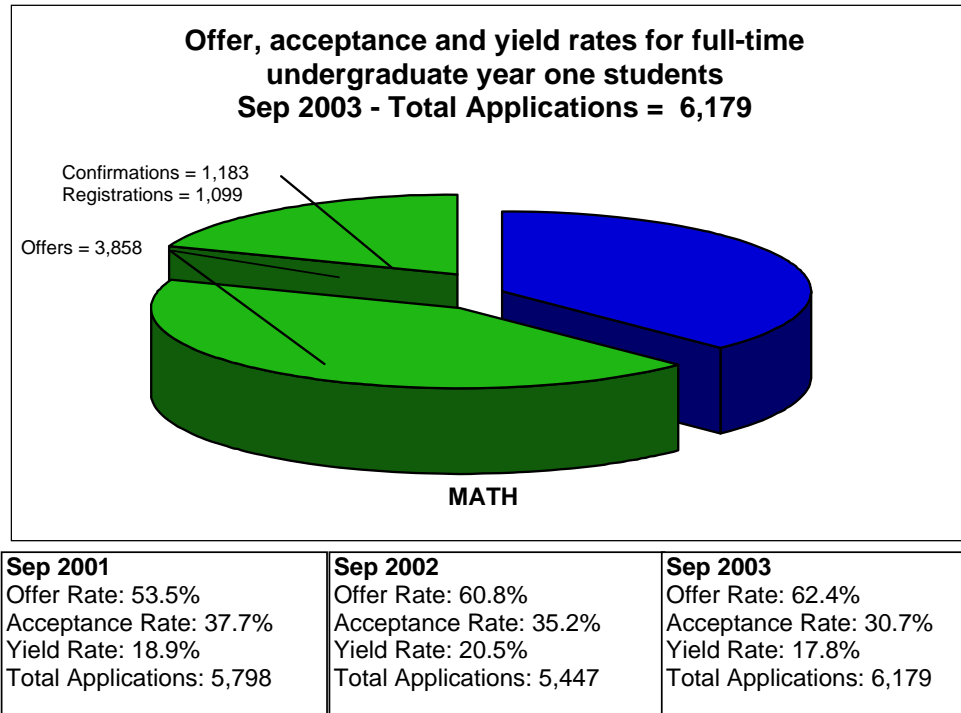
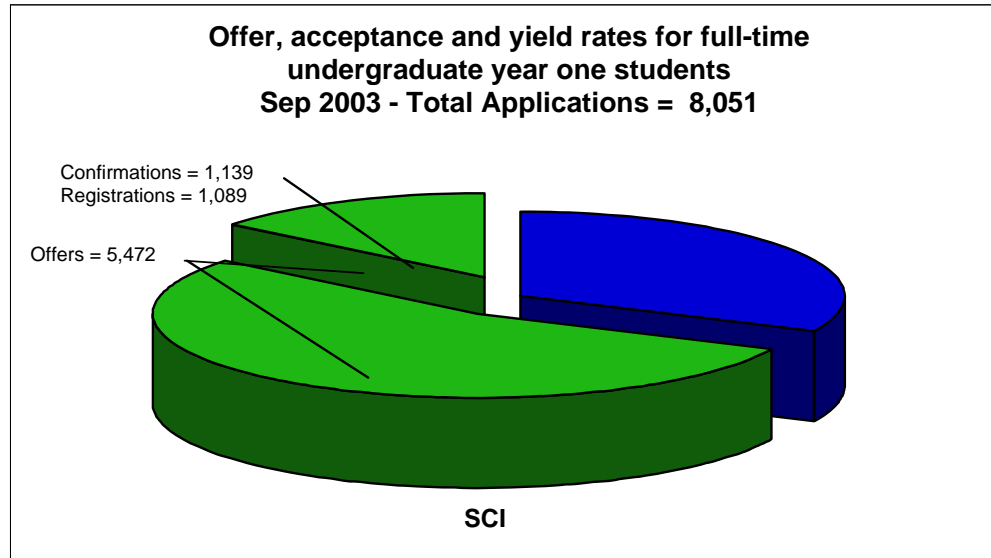


Fig. 1.4F



Sep 2001	Sep 2002	Sep 2003
Offer Rate: 72.2%	Offer Rate: 67.7%	Offer Rate: 68%
Acceptance Rate: 23.9%	Acceptance Rate: 21.0%	Acceptance Rate: 20.8%
Yield Rate: 16.1%	Yield Rate: 13.3%	Yield Rate: 13.5%
Total Applications: 4,334	Total Applications: 5,308	Total Applications: 8,051

Fig. 1.5A

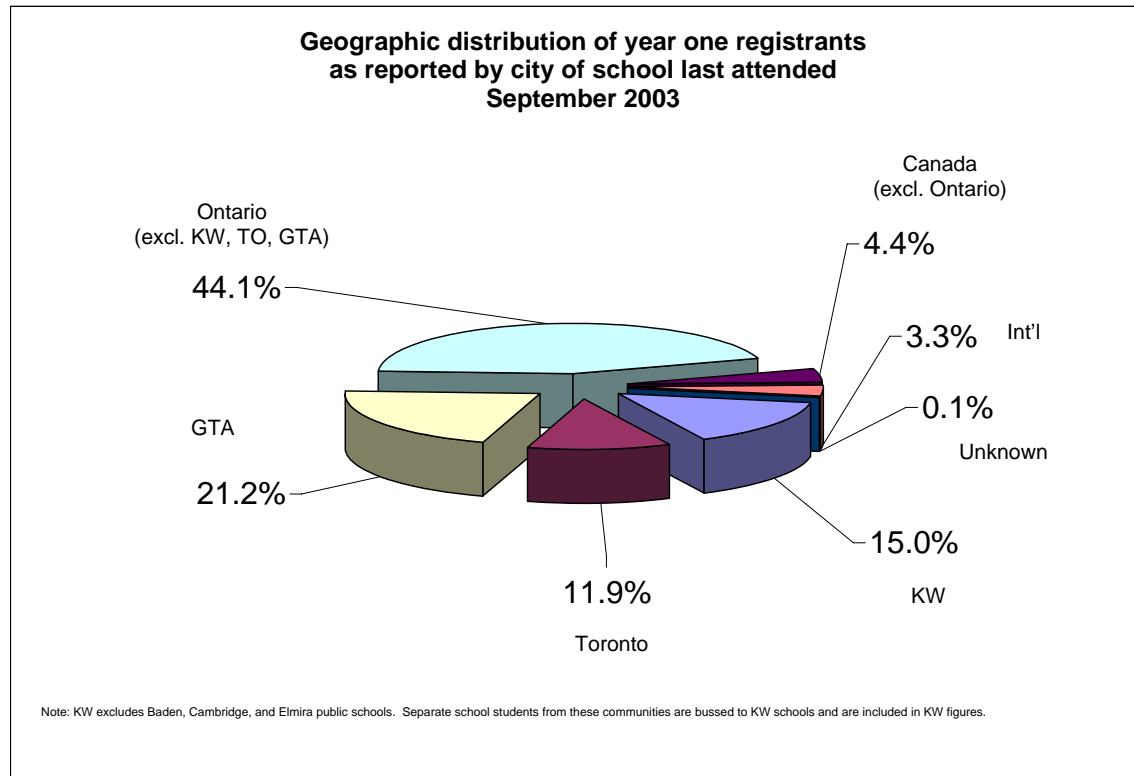


Fig. 1.6A

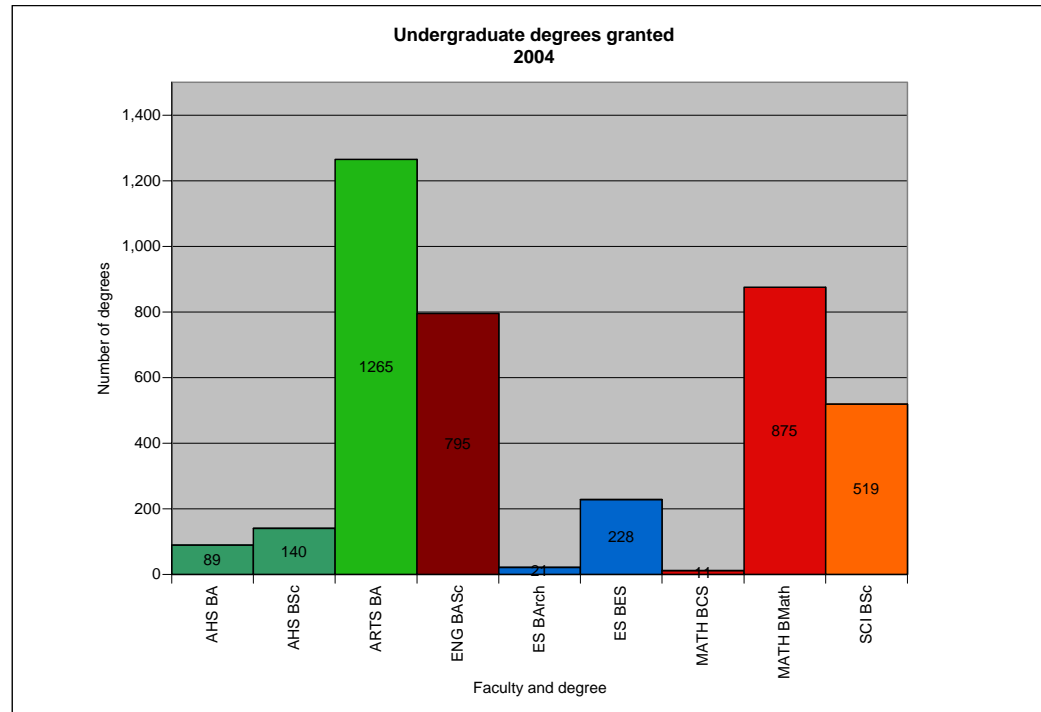


Fig. 1.7A

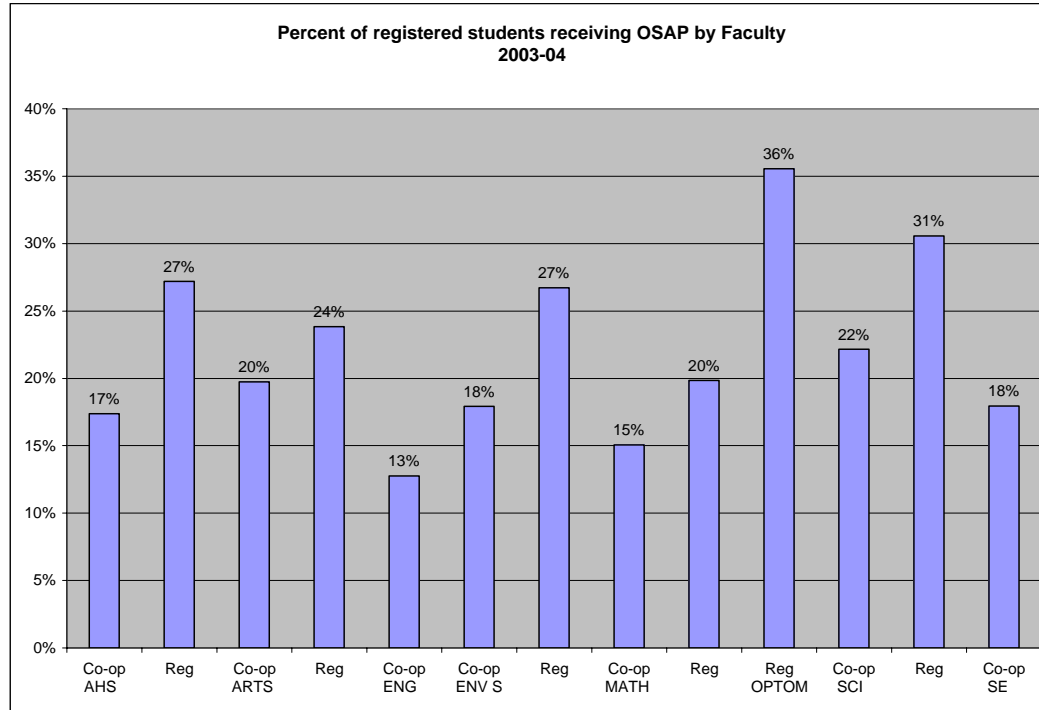


Fig. 1.7B

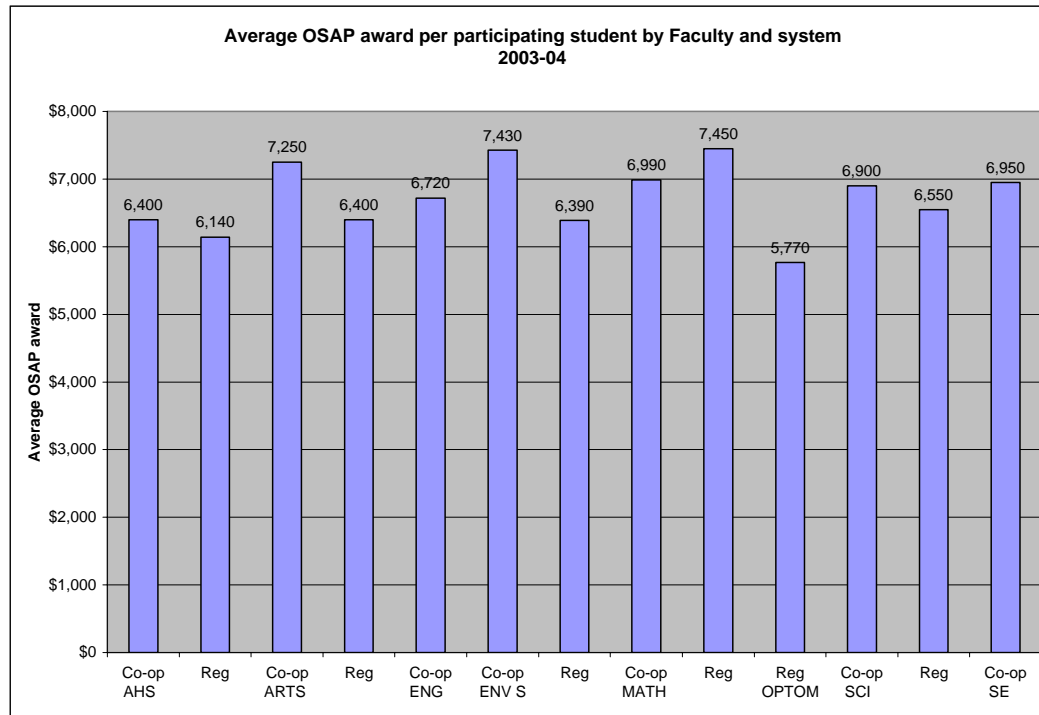


Fig. 1.8A

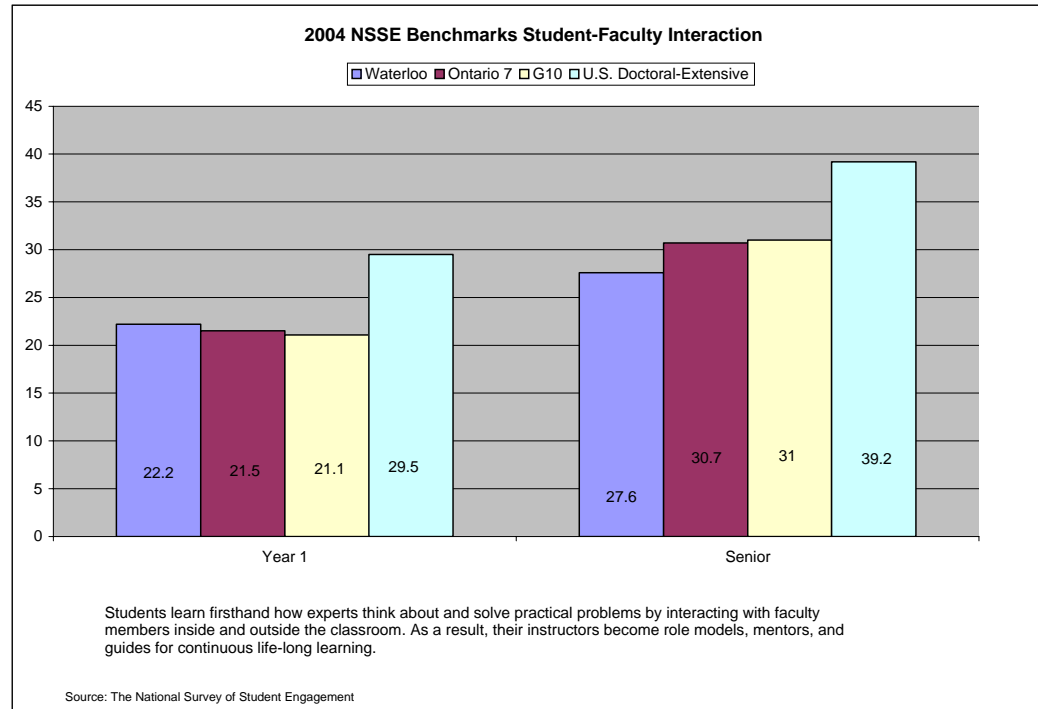


Fig. 1.8B

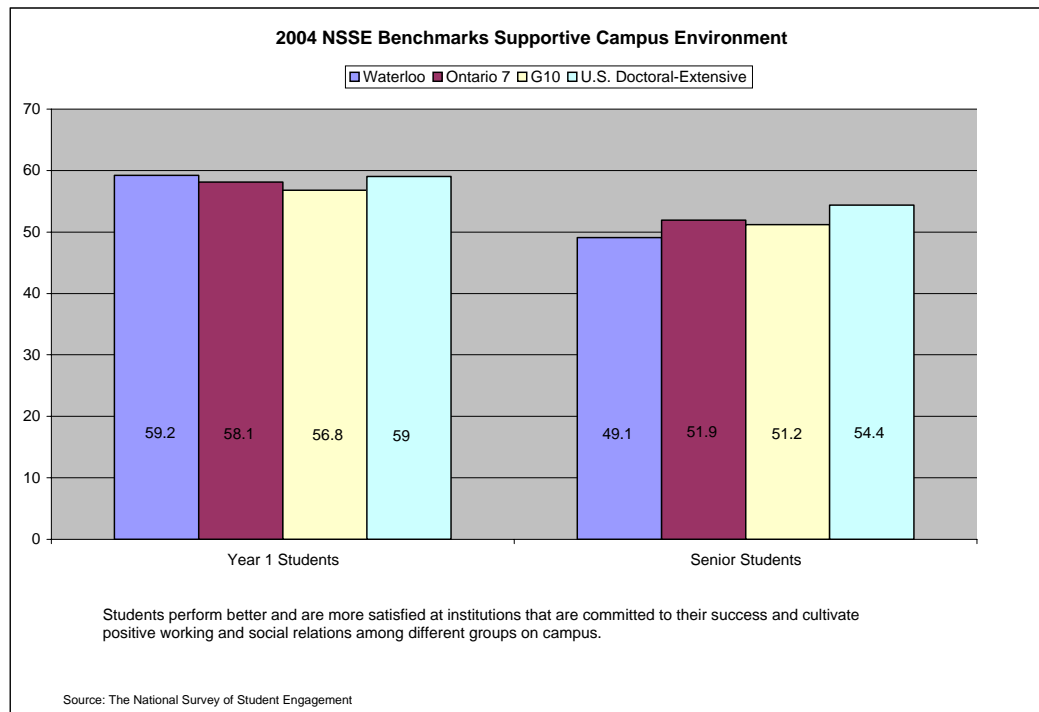


Fig. 1.8C

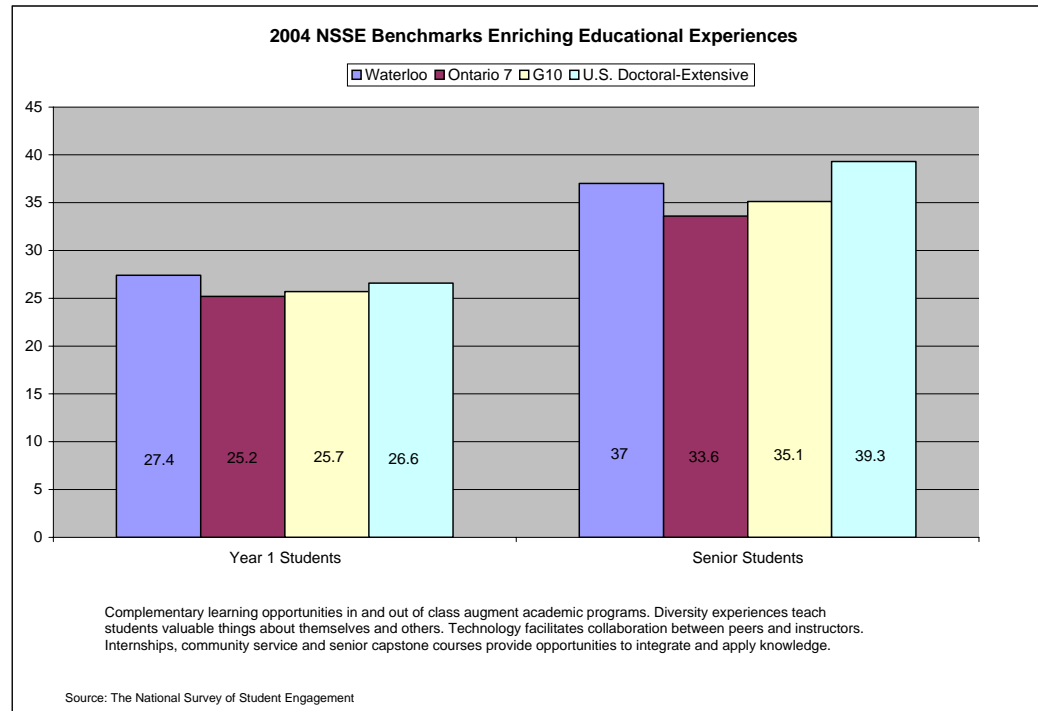


Fig. 2.1A

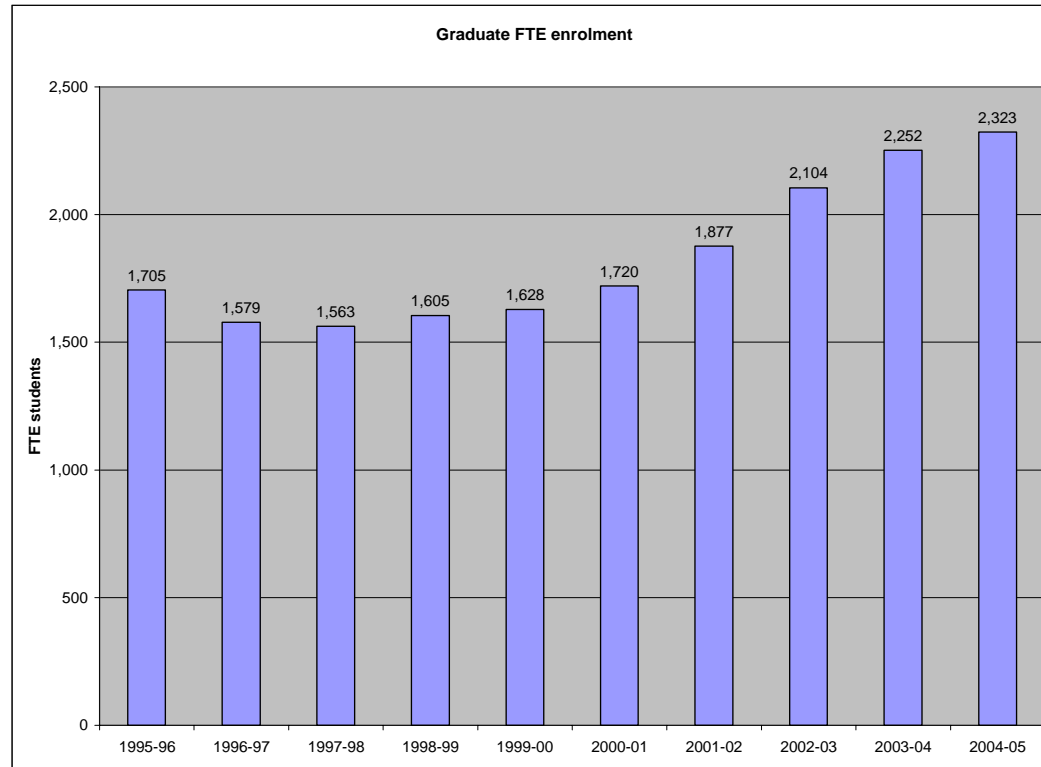


Fig. 2.1B

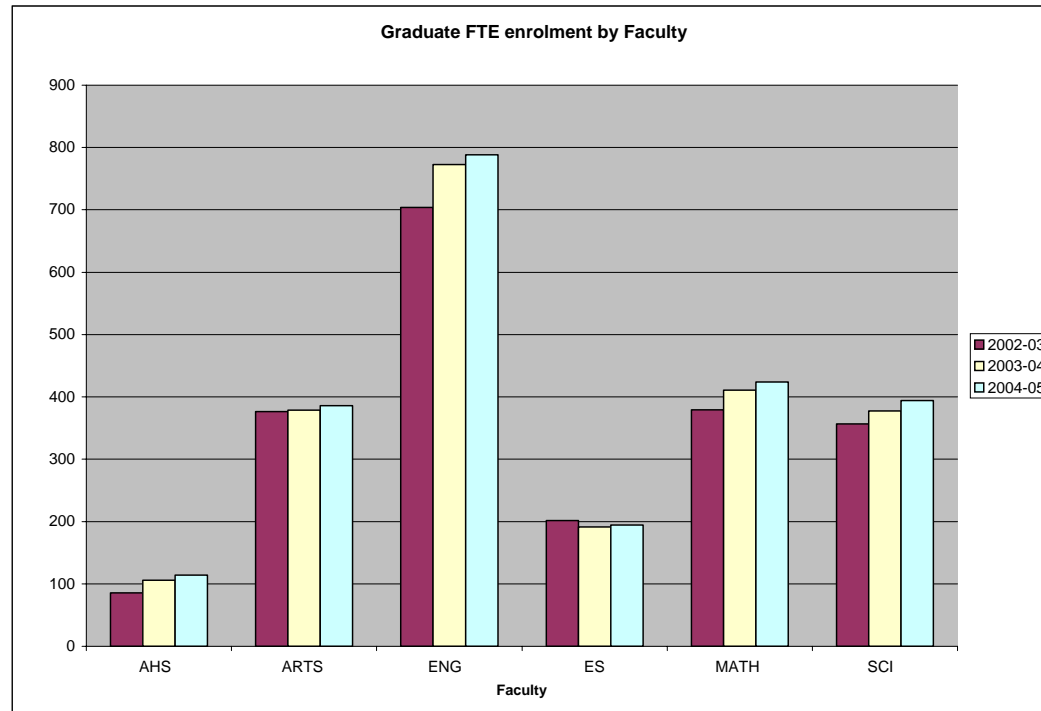


Fig. 2.1C

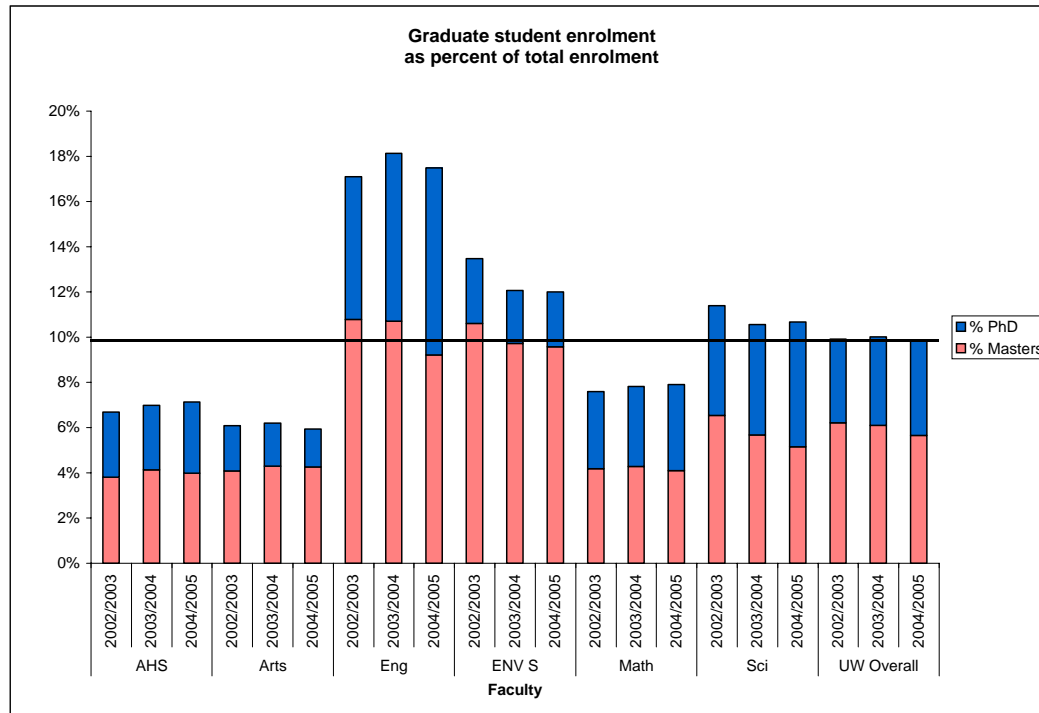


Fig. 2.2A

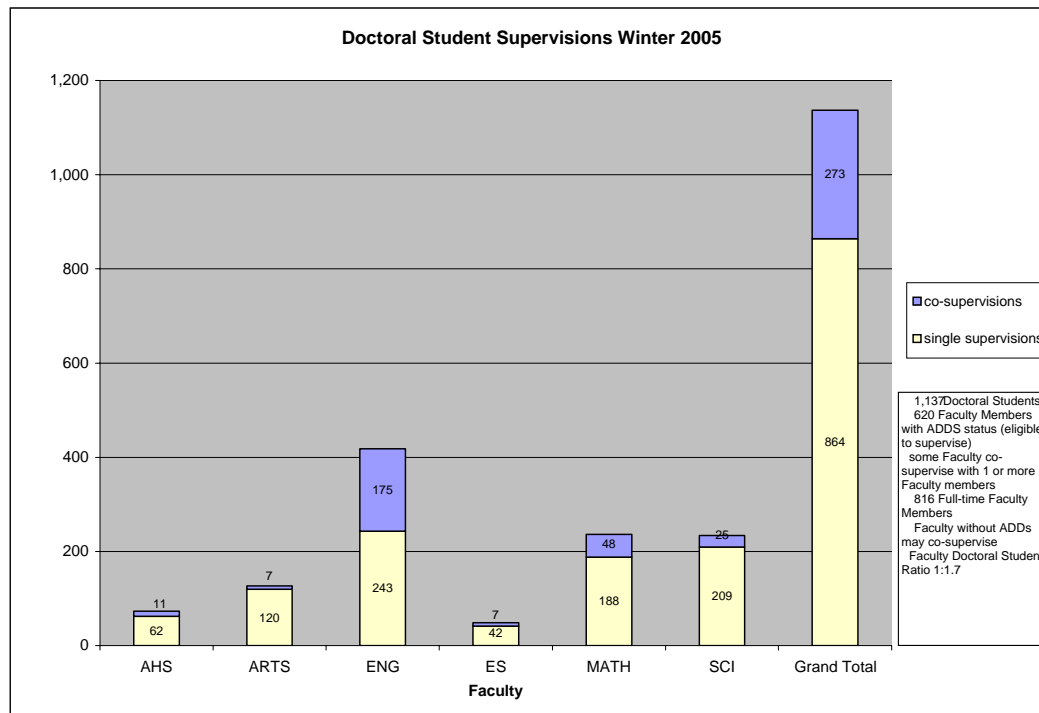


Fig. 2.3A

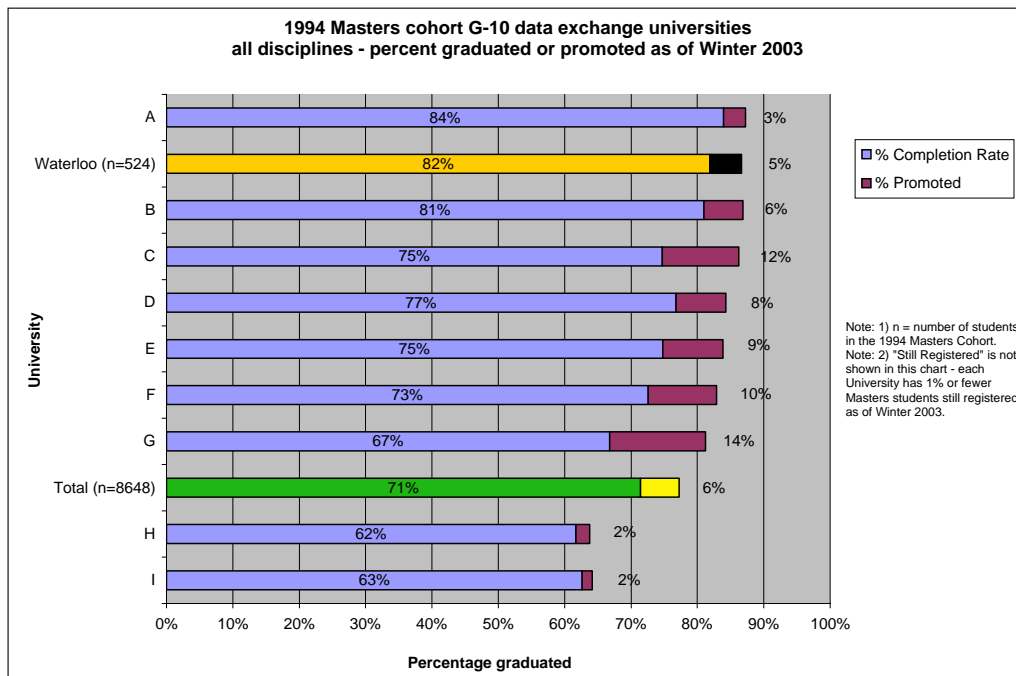


Fig. 2.3B

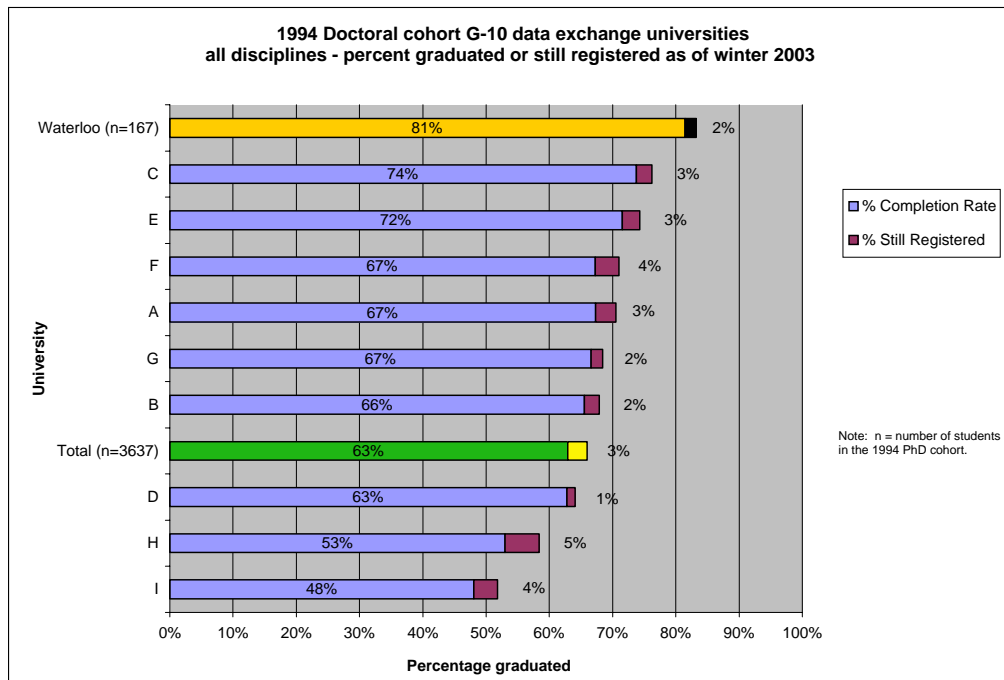


Fig. 2.3C

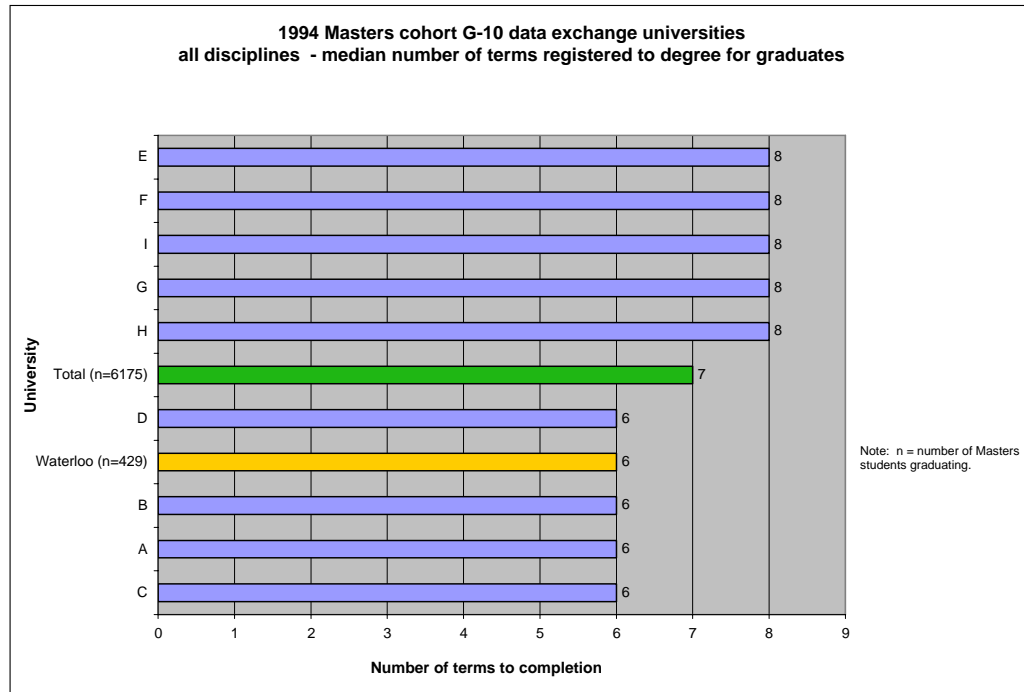


Fig. 2.3D

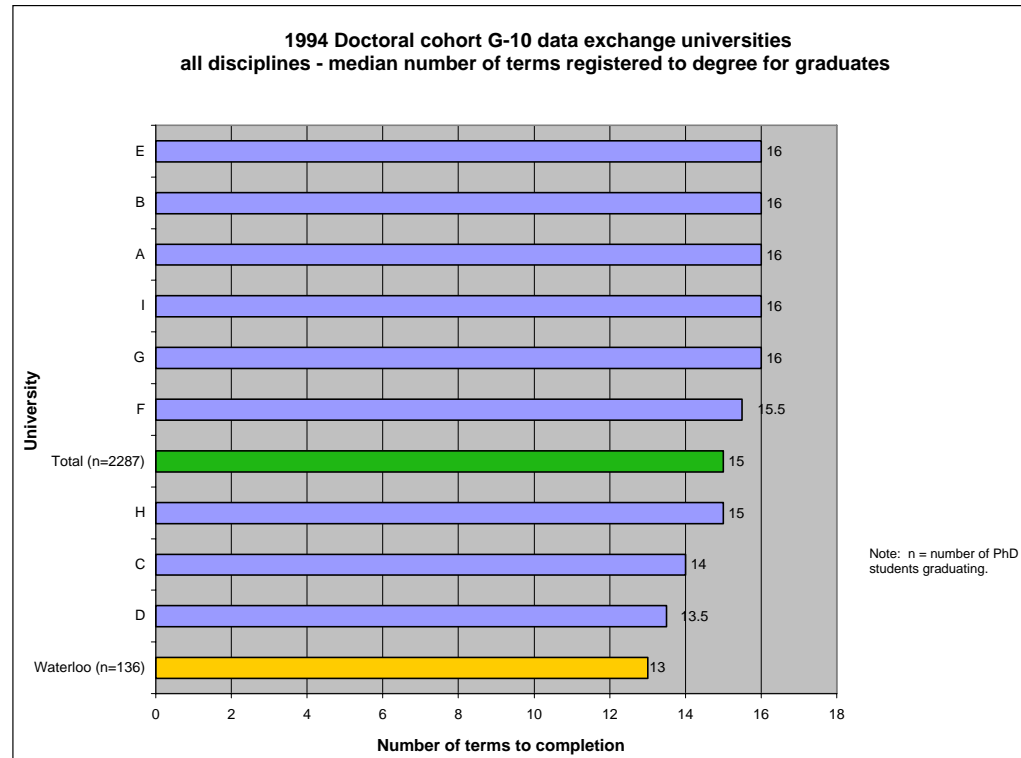


Fig. 2.3E

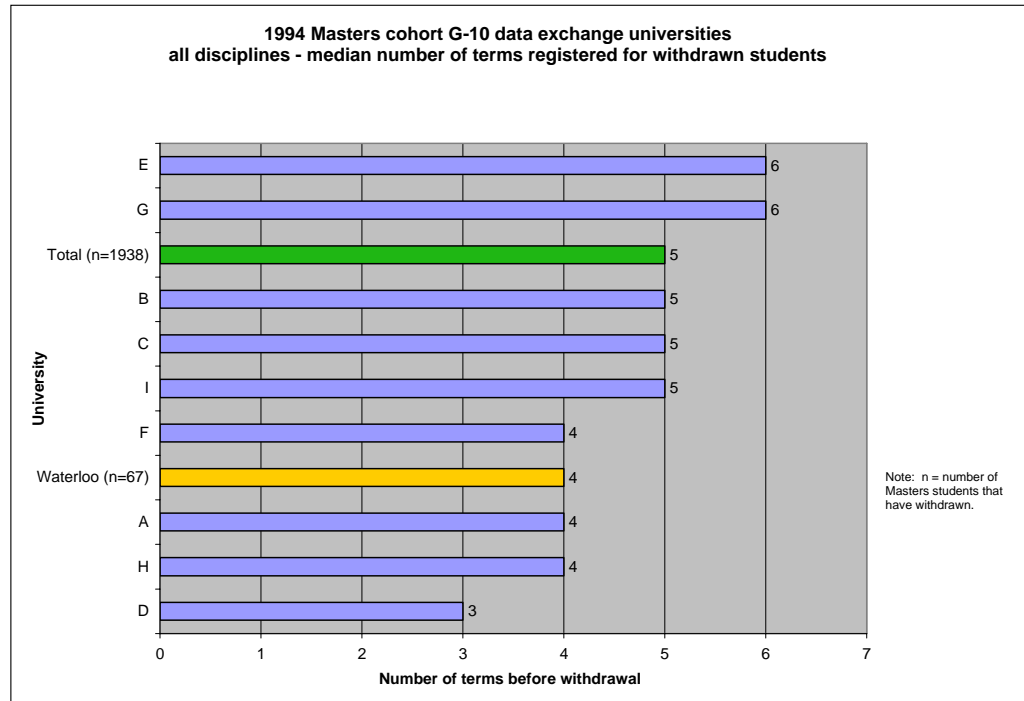


Fig. 2.3F

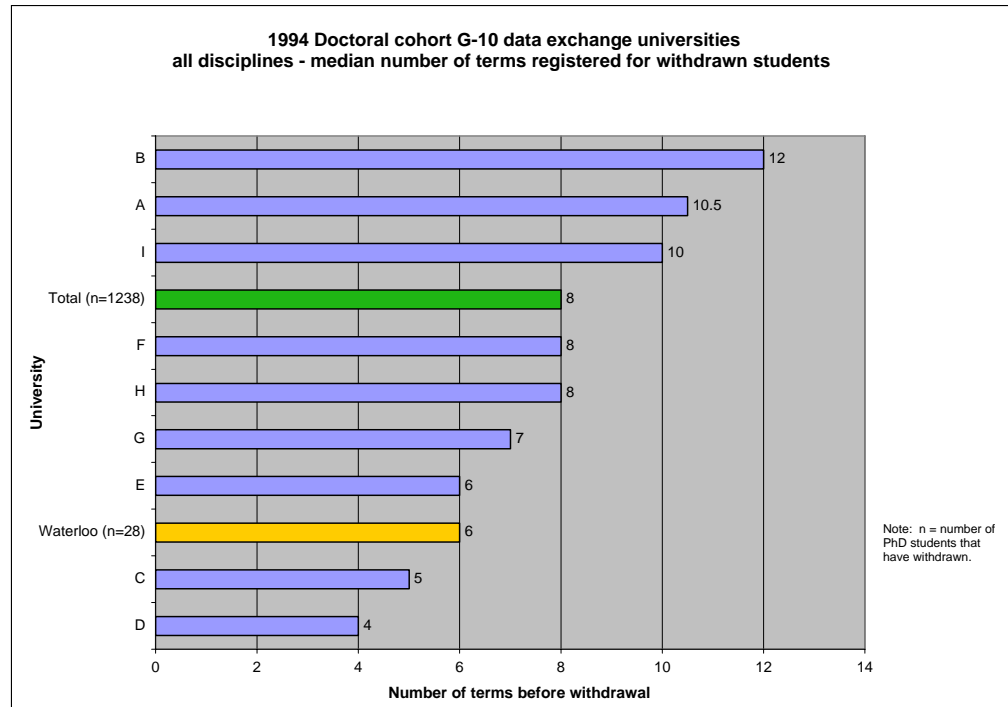


Fig. 2.3G

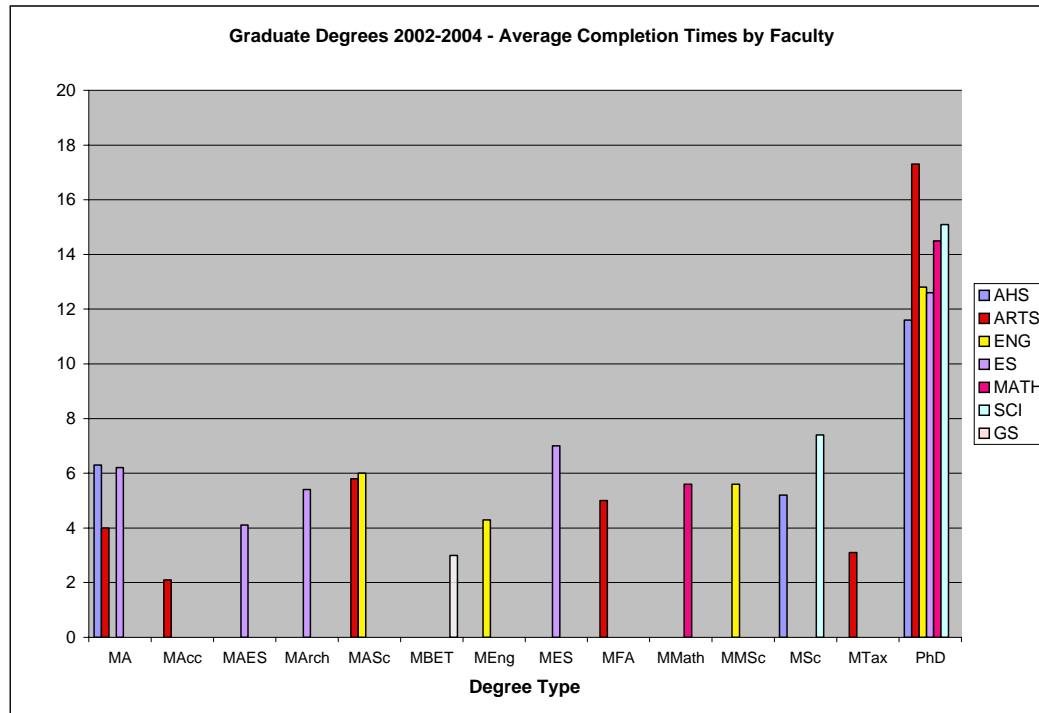


Fig. 2.4A

Financial support to masters students 2003-04							
	External Scholarships	Internal Scholarships	Teaching Assistant	Research Assistant	Other	Total	Average Support
AHS	256,366	140,510	401,024	253,300	101,903	1,153,103	20,991
ARTS	339,078	451,945	833,113	122,479	326,588	2,073,203	15,159
ENG	1,332,744	979,870	979,321	3,488,238	802,794	7,582,966	20,454
ES	336,797	227,521	471,560	181,610	434,879	1,652,366	14,220
MATH	952,354	637,025	1,761,814	1,524,887	241,198	5,117,278	24,516
SCI	577,503	472,848	1,009,097	2,004,565	340,386	4,404,399	23,048
Total	3,794,842	2,909,719	5,455,928	7,575,079	2,247,747	21,983,315	

Fig. 2.4B

Financial support to doctoral students 2003-04							
	External Scholarships	Internal Scholarships	Teaching Assistant	Research Assistant	Other	Total	Average Support
AHS	385,099	185,123	205,072	199,897	78,509	1,053,699	28,530
ARTS	910,103	653,752	1,034,925	213,853	239,891	3,052,524	26,644
ENG	2,116,145	1,333,389	896,822	3,114,022	771,446	8,231,824	27,198
ES	108,729	108,267	218,778	120,753	95,980	652,507	21,026
MATH	1,163,148	772,948	1,650,746	1,795,280	251,805	5,633,927	29,973
SCI	822,013	551,965	1,092,276	1,619,515	387,817	4,473,585	26,523
Total	5,505,237	3,605,444	5,098,619	7,063,320	1,825,446	23,098,066	

Fig. 2.4C

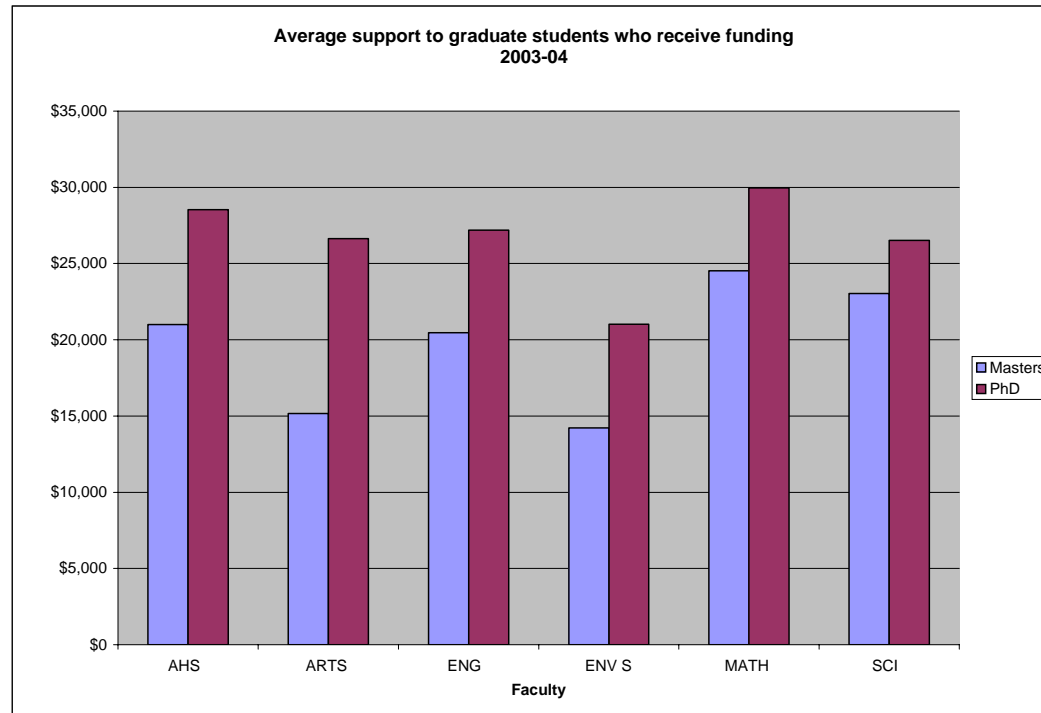


Fig. 2.5A

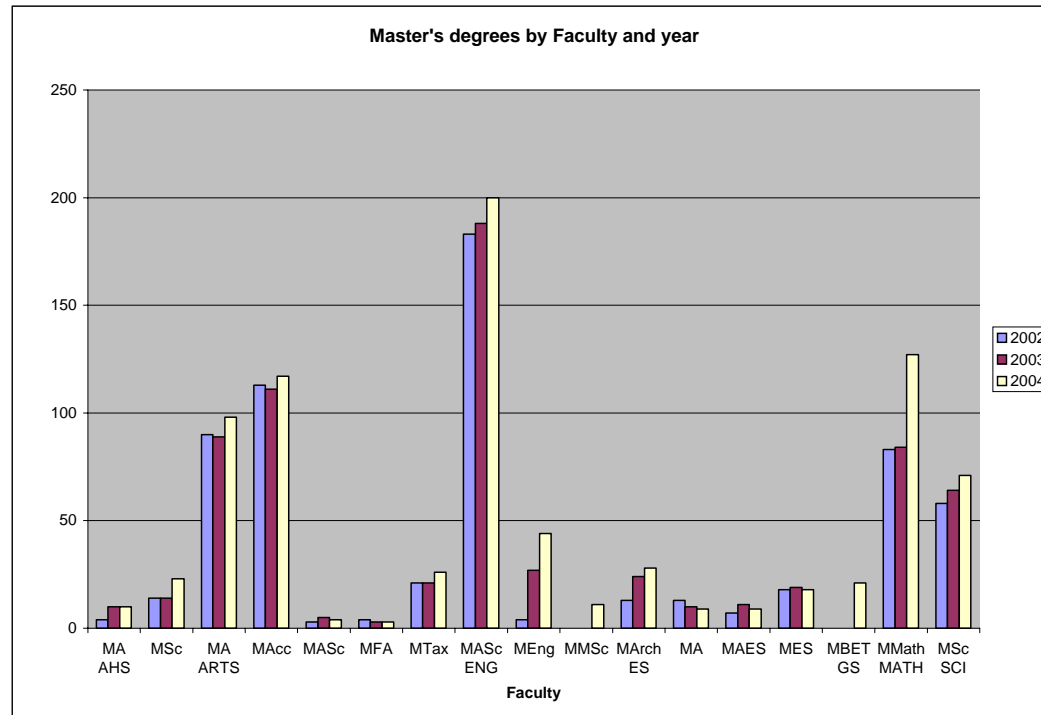


Fig. 2.5B

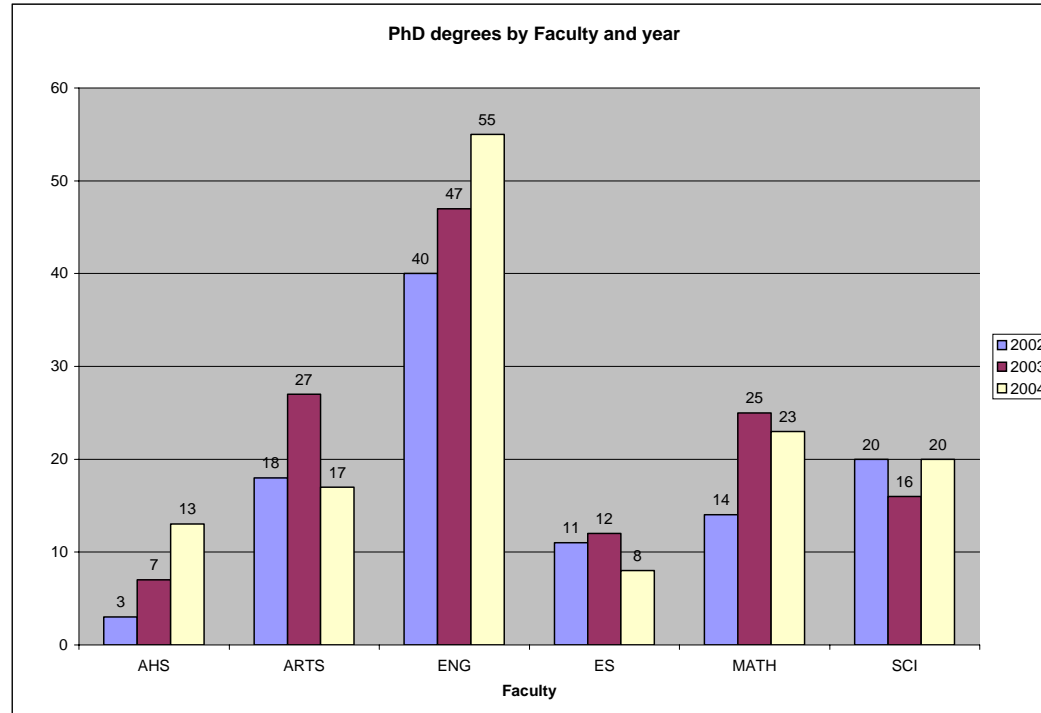


Fig. 2.6A

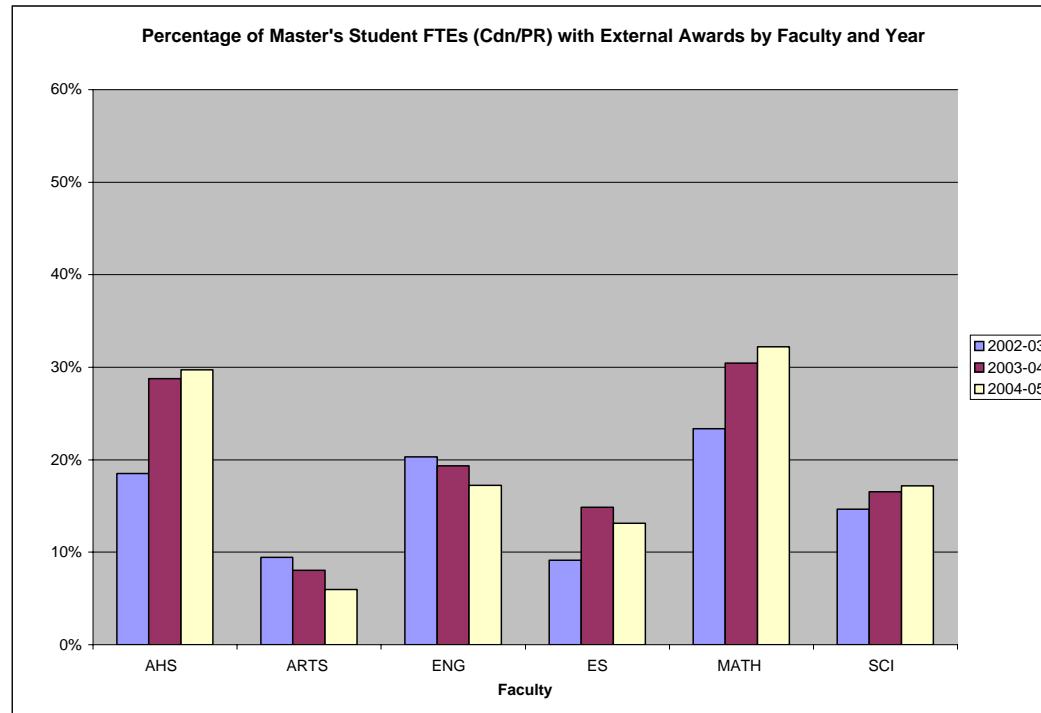


Fig. 2.6B

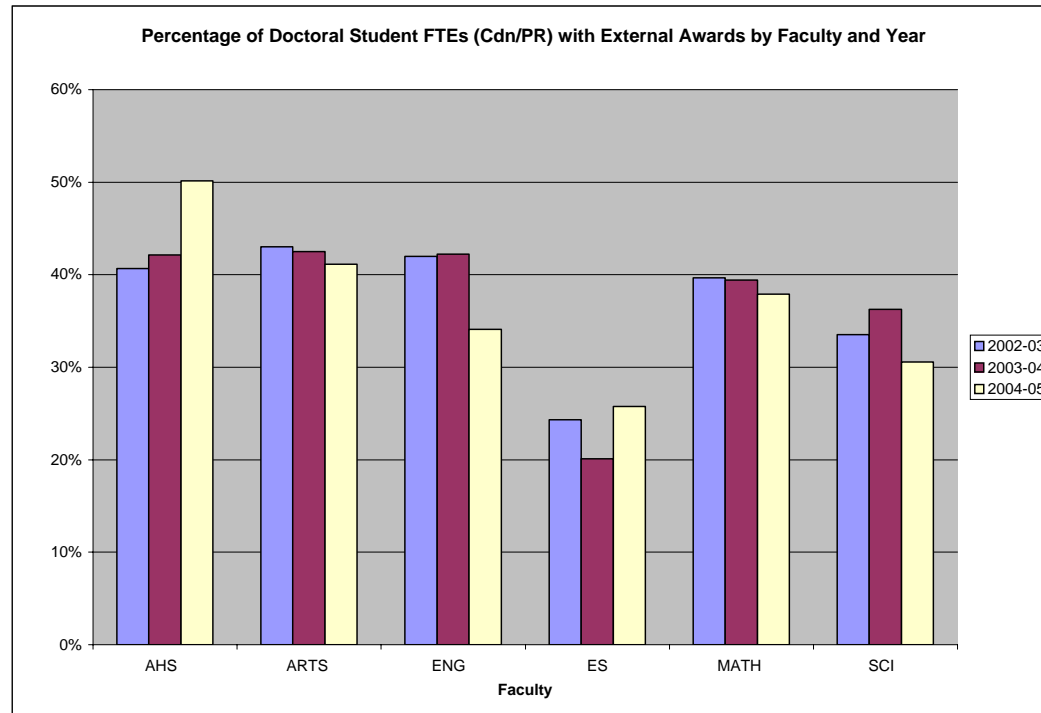


Fig. 3.1A

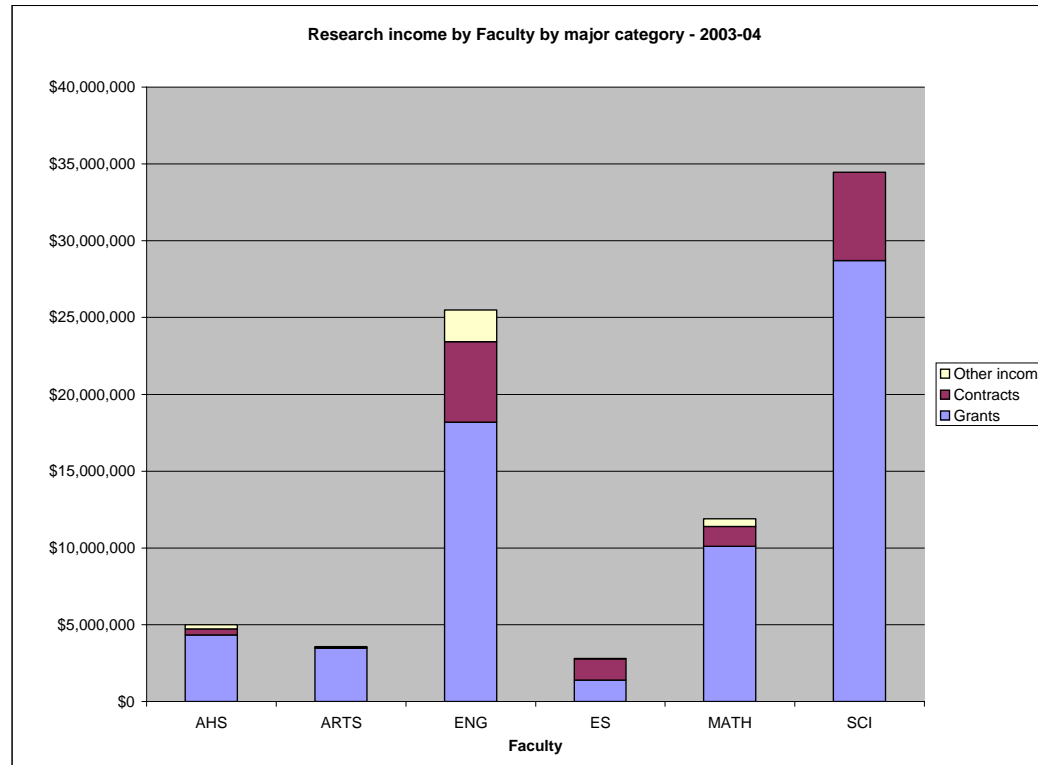


Fig. 3.1B

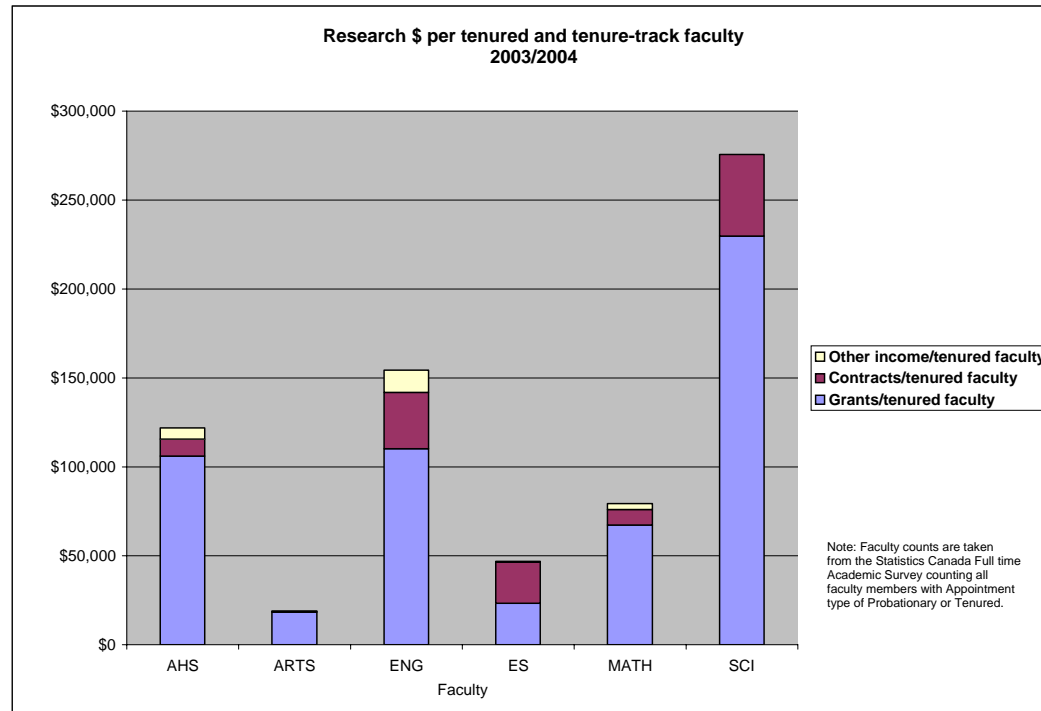


Fig. 3.2A

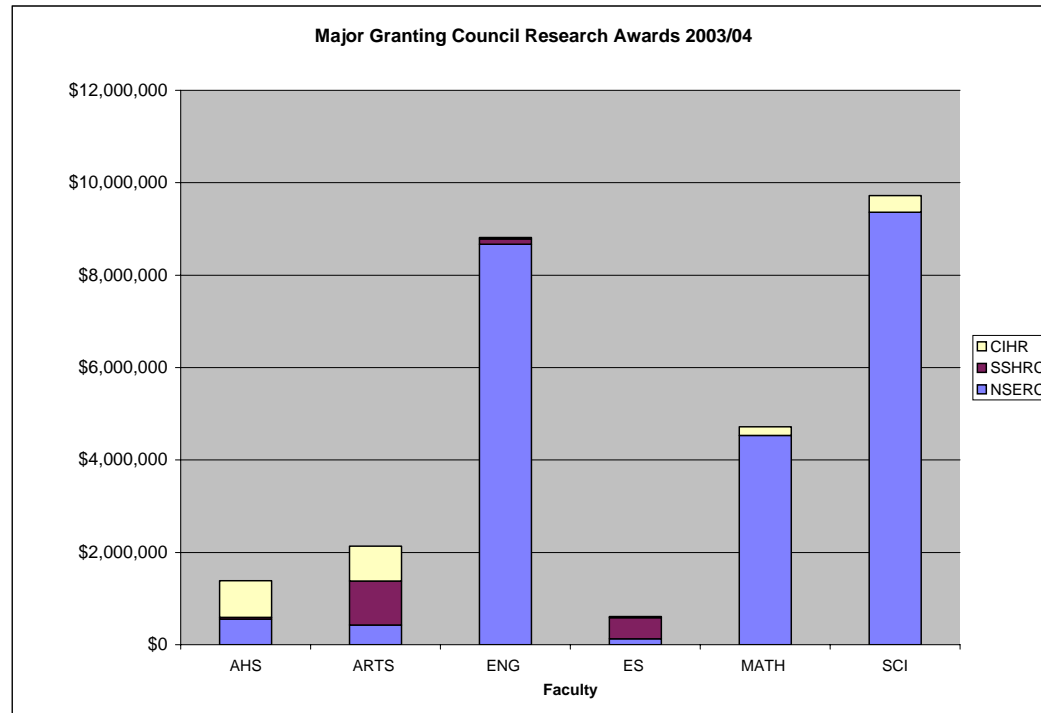


Fig. 3.2B

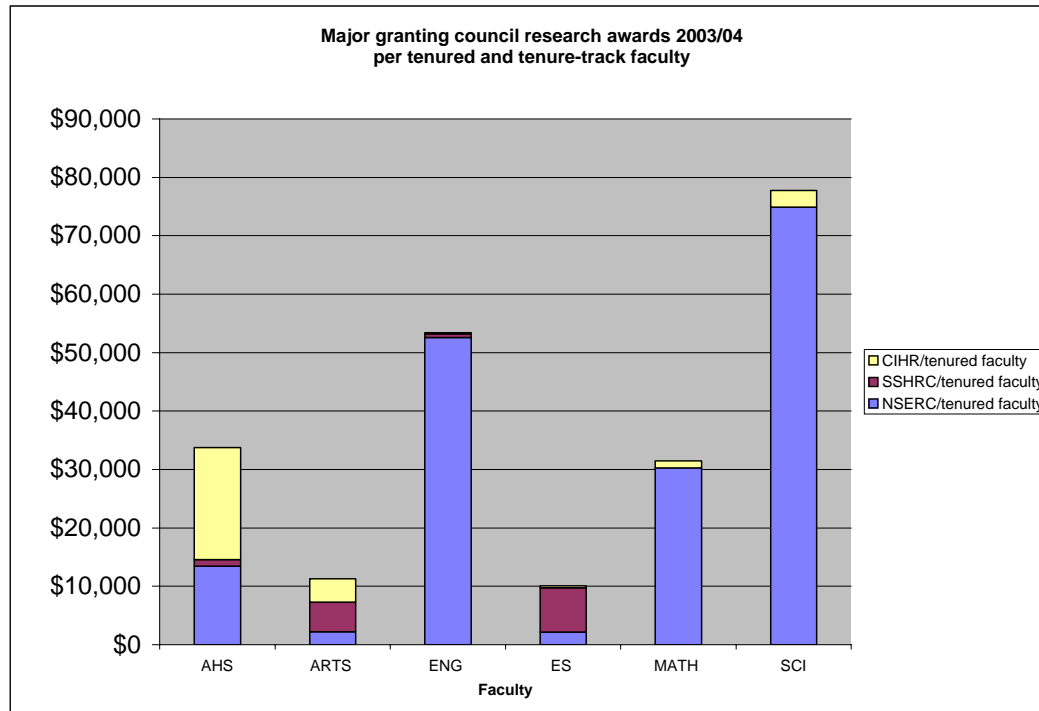


Fig. 3.3A

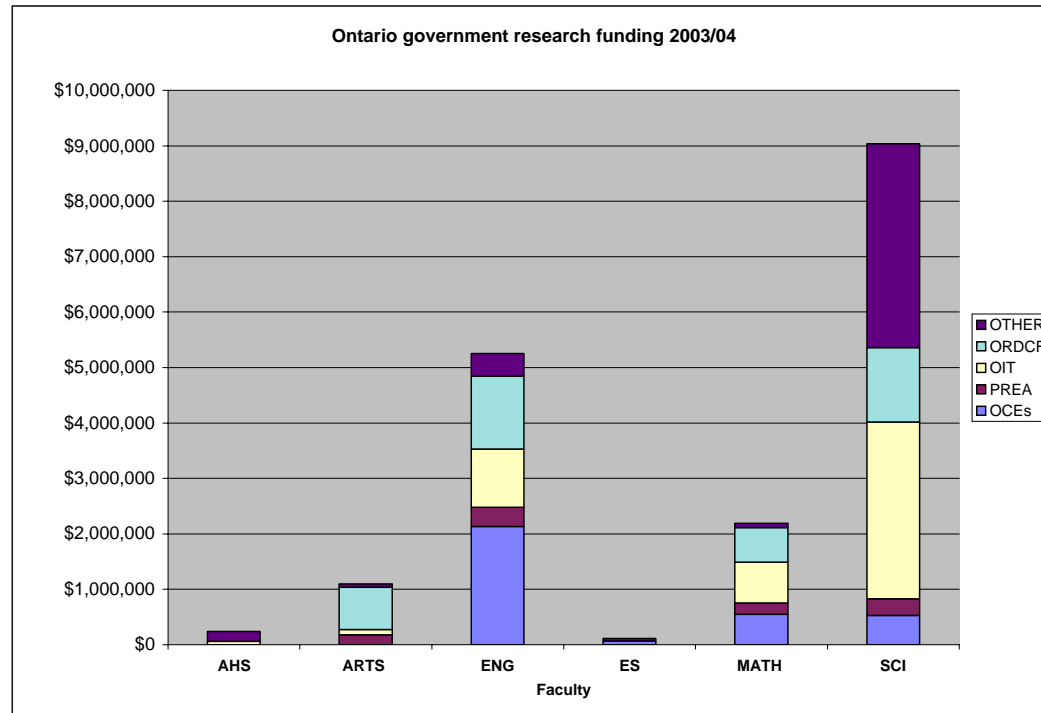


Fig. 3.3B

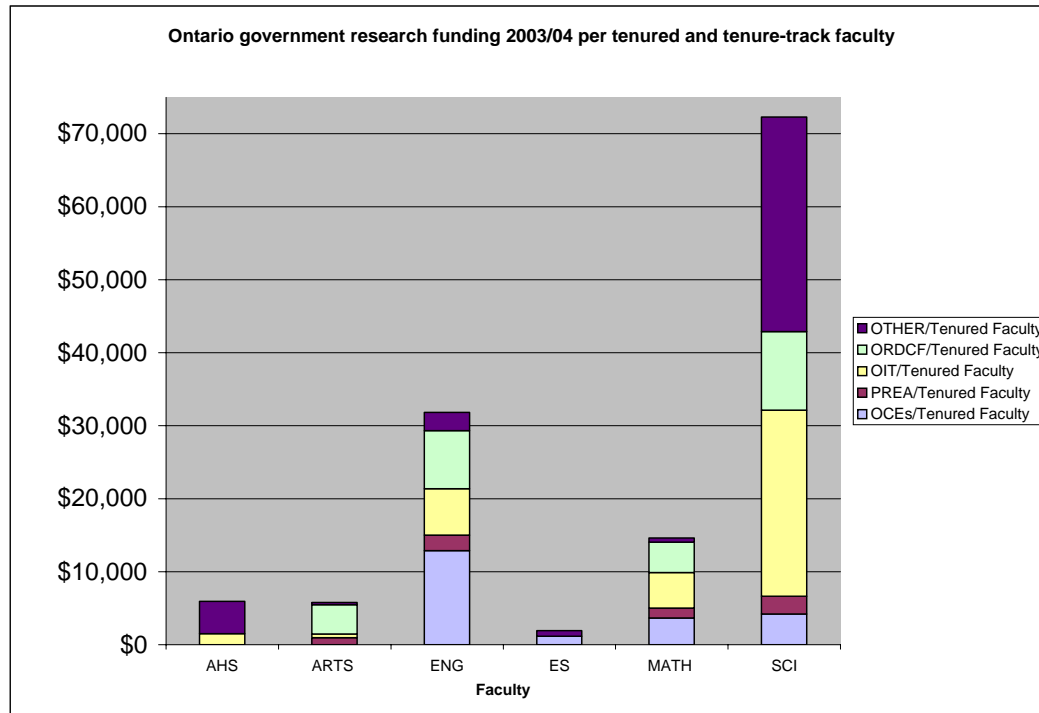


Figure 3.4A

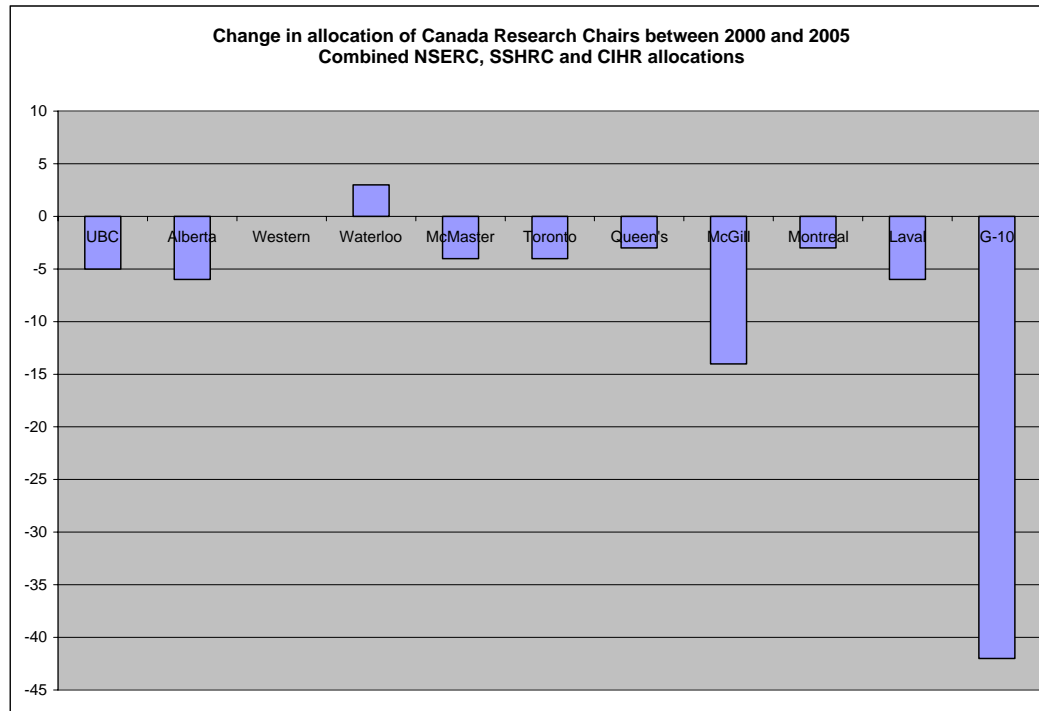


Fig. 3.4B

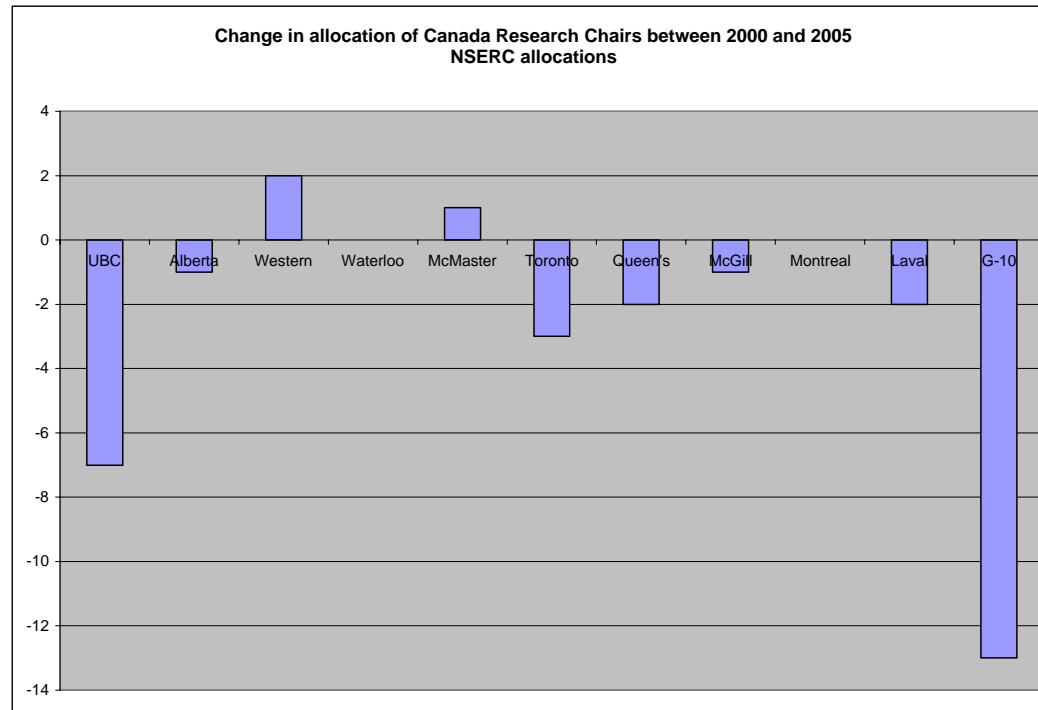


Fig. 3.4C

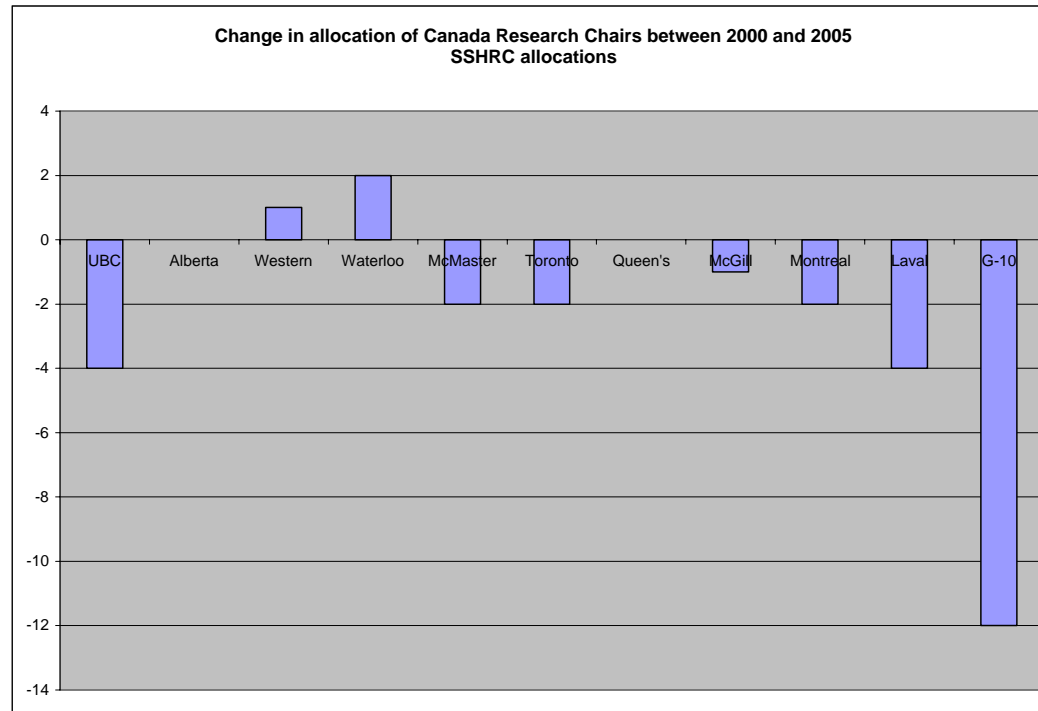


Fig. 3.4D

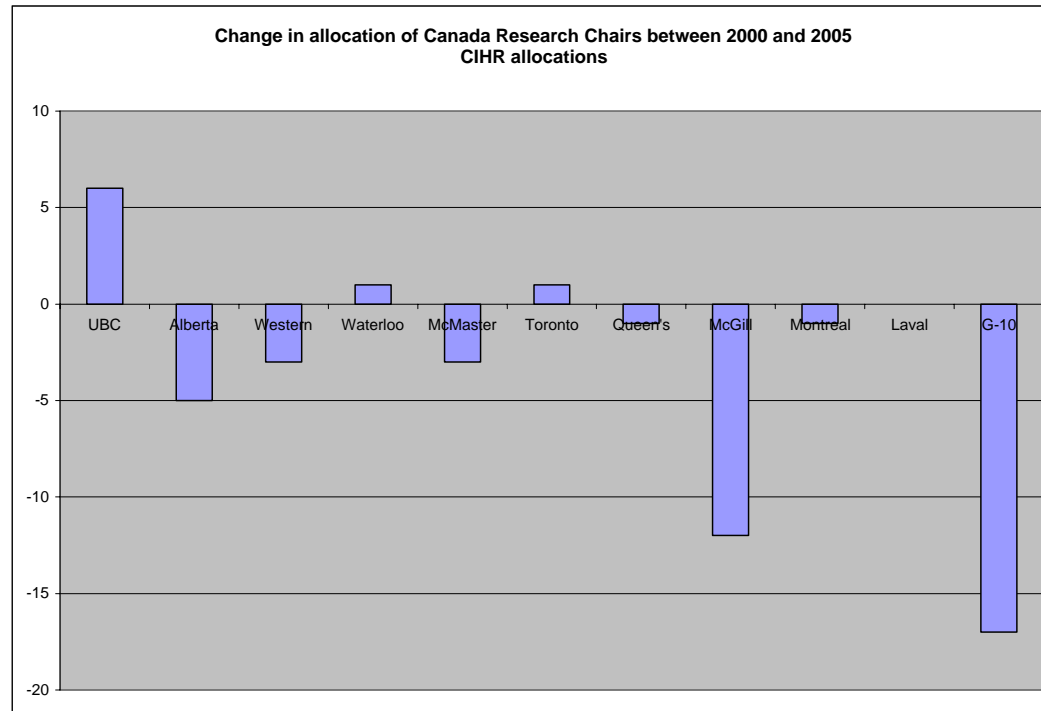


Fig. 3.4E

Canadian Institutes of Health Research (CIHR)				
G10	Sept 2000 \$ x 000s	Sept 2005 \$ x 000s	Change \$ x 000s	Change %
McGill	\$102,577	\$189,256	\$86,679	84.5%
McMaster	\$31,887	\$61,935	\$30,048	94.2%
Queens	\$17,084	\$32,307	\$15,223	89.1%
Montreal	\$63,480	\$130,454	\$66,974	105.5%
Laval	\$32,077	\$66,328	\$34,251	106.8%
Alberta	\$50,505	\$95,541	\$45,036	89.2%
UBC	\$55,024	\$127,812	\$72,788	132.3%
Toronto	\$146,143	\$309,537	\$163,394	111.8%
Waterloo	\$888	\$4,900	\$4,012	451.8%
Western	\$35,666	\$67,893	\$32,227	90%
Total	\$535,331	\$1,085,963	\$550,632	102.9%
Total/all Institutions	\$684,738	\$1,435,098	\$ 750,360	109.6%

Fig. 3.4F

Natural Sciences and Engineering Research Council (NSERC)				
G10	Sept 2000 \$ x 000s	Sept 2005 \$ x 000s	Change \$ x 000s	Change %
McGill	\$70,797	\$83,668	\$12,871	18.2%
McMaster	\$42,448	\$51,854	\$9,406	22.2%
Queens	\$42,287	\$47,521	\$5,234	12.4%
Montreal	\$41,667	\$50,760	\$9,093	21.8%
Laval	\$55,932	\$63,347	\$7,415	13.3%
Alberta	\$79,515	\$93,668	\$14,153	17.8%
UBC	\$105,948	\$116,448	\$10,500	9.9%
Toronto	\$116,607	\$133,895	\$17,288	14.8%
Waterloo	\$60,622	\$71,867	\$11,245	18.5%
Western	\$34,700	\$43,553	\$8,853	25.5%
Total	\$650,523	\$756,581	\$ 106,058	16.3%
Total/all Institutions	\$1,156,028	\$ 1,379,256	\$ 223,228	19.3%

Fig. 3.4G

Social Sciences and Humanities Research Council (SSHRC)				
G10	Sept 2000 \$ x 000s	Sept 2005 \$ x 000s	Change \$ x 000s	Change %
McGill	\$9,619	\$16,257	\$6,638	69.0%
McMaster	\$5,768	\$8,140	\$2,372	41.1%
Queens	\$5,076	\$8,742	\$3,666	72.2%
Montreal	\$12,856	\$20,718	\$7,862	61.2%
Laval	\$11,955	\$16,782	\$4,827	40.4%
Alberta	\$9,283	\$16,683	\$7,400	79.7%
UBC	\$15,750	\$23,857	\$8,107	51.5%
Toronto	\$22,204	\$36,880	\$14,676	66.1%
Waterloo	\$2,701	\$6,134	\$3,433	127.1%
Western	\$5,841	\$11,254	\$5,413	92.7%
Total	\$101,053	\$165,447	\$64,394	63.7%
Total/all Institutions	\$185,139	\$322,269	\$ 137,130	74.1%

Fig. 4.1A

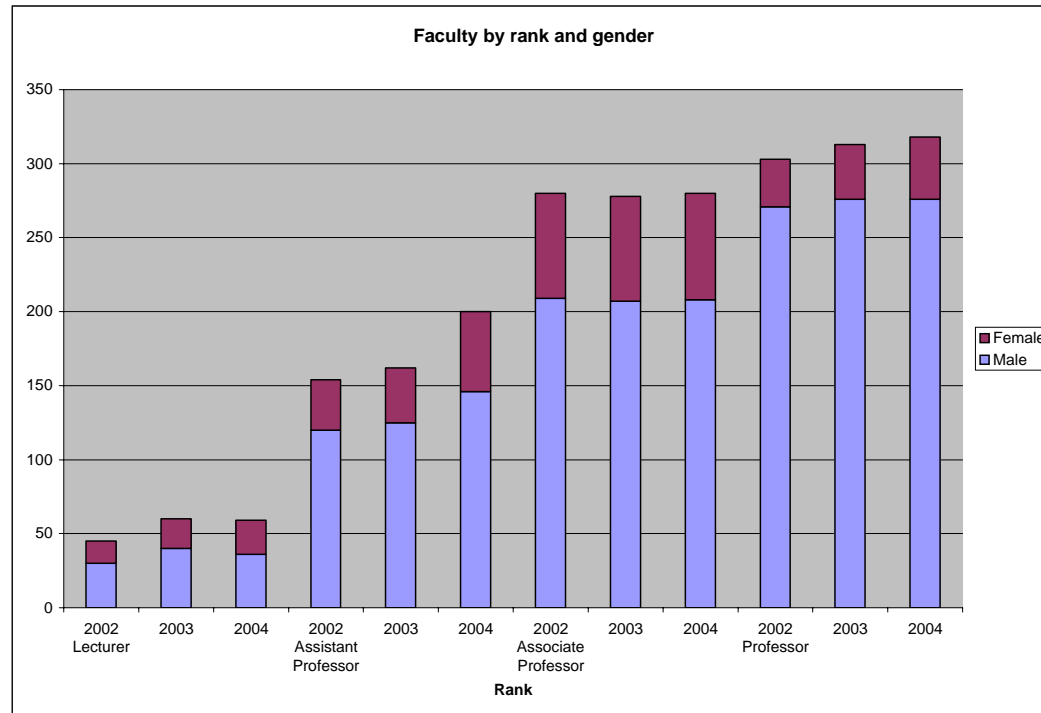


Fig. 4.1B

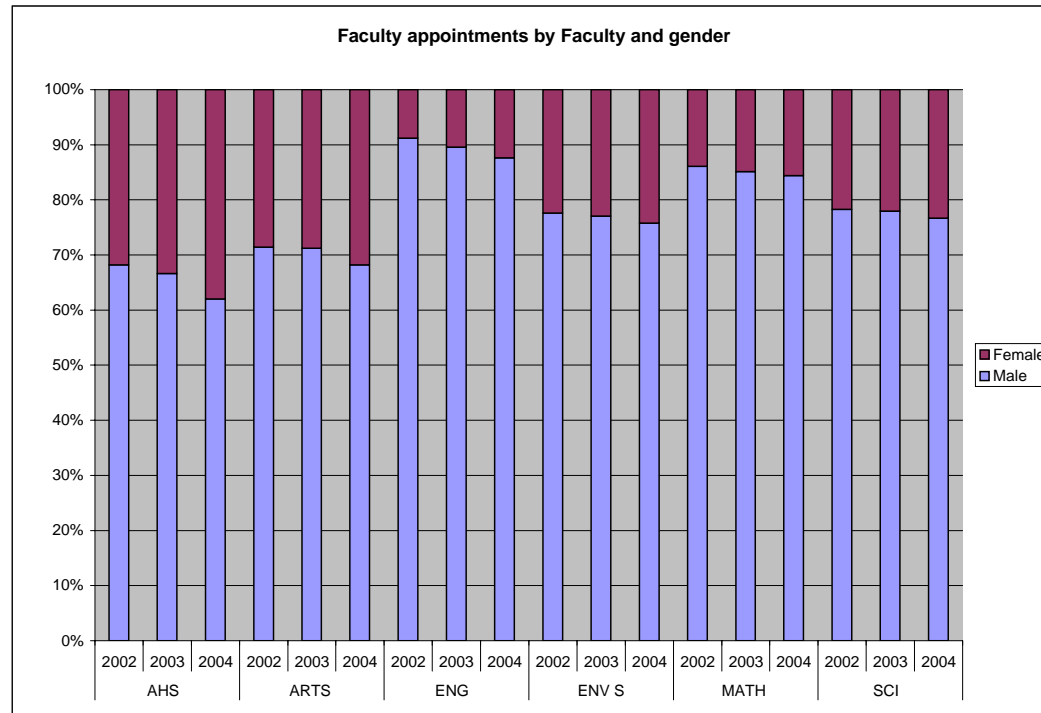


Fig. 4.2A

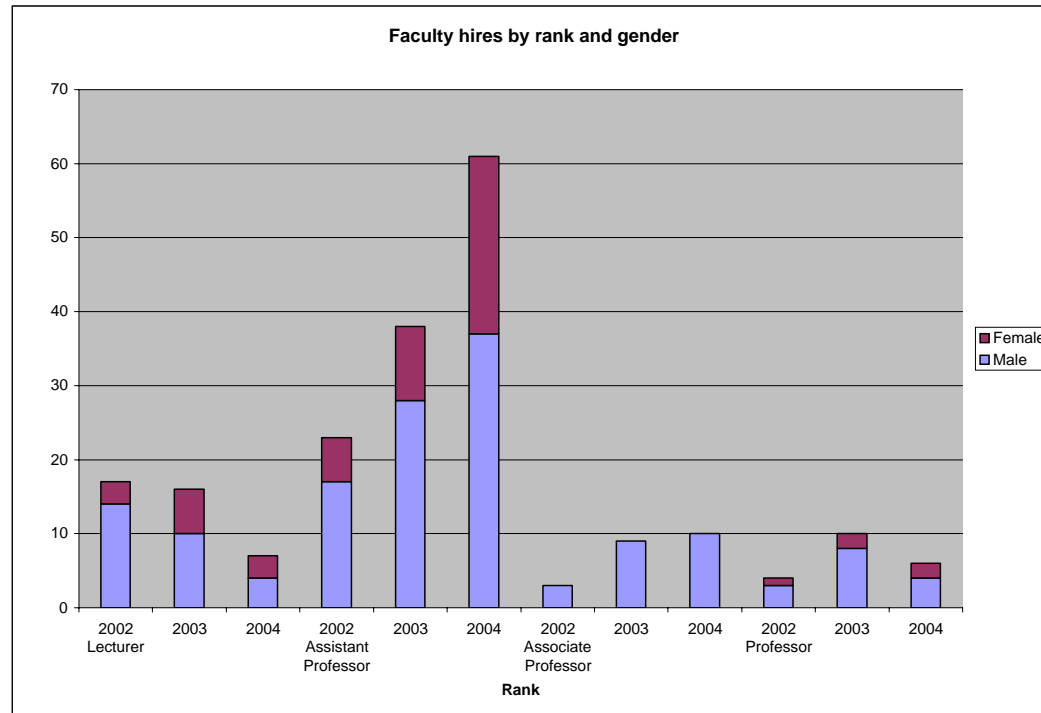


Fig. 4.2B

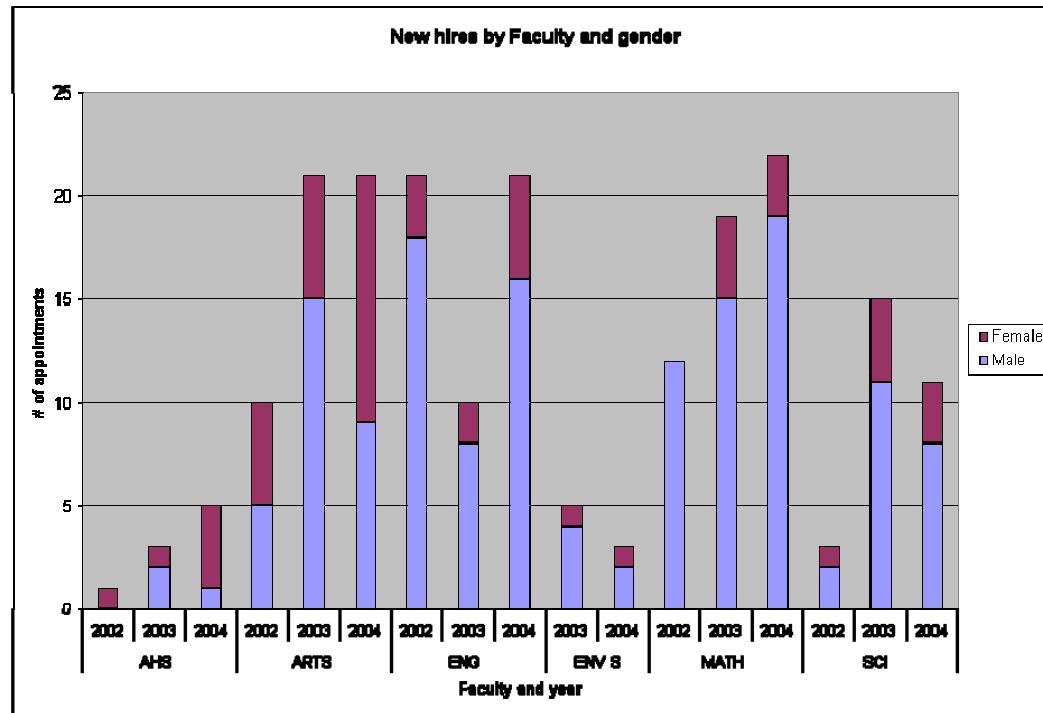


Fig. 4.3A

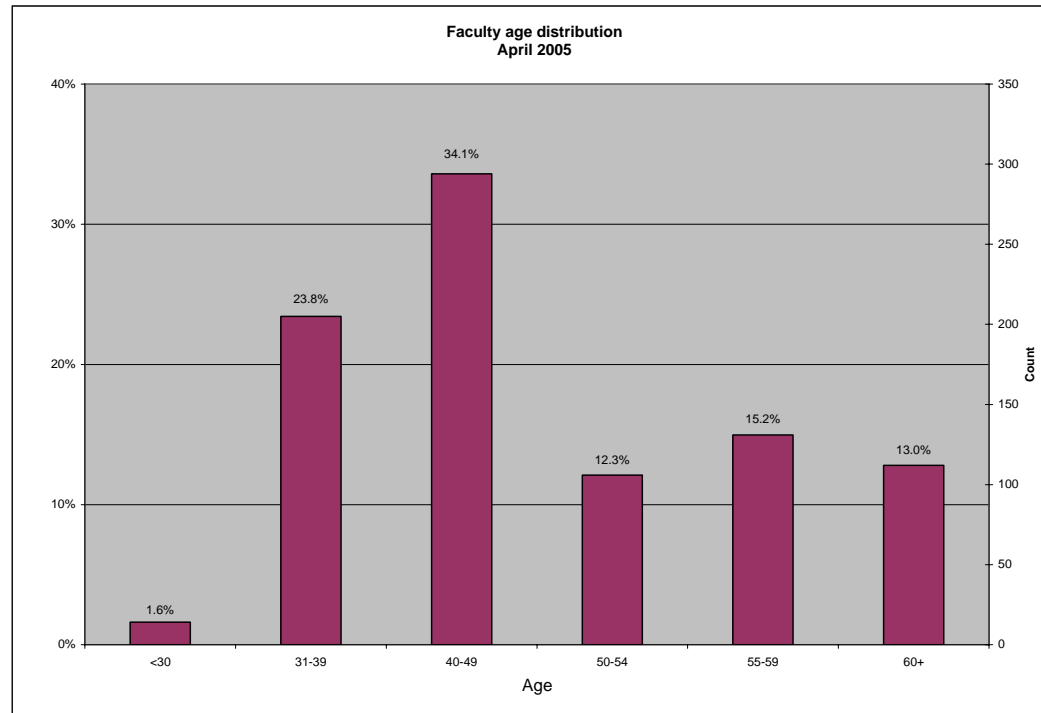


Fig. 5.1A

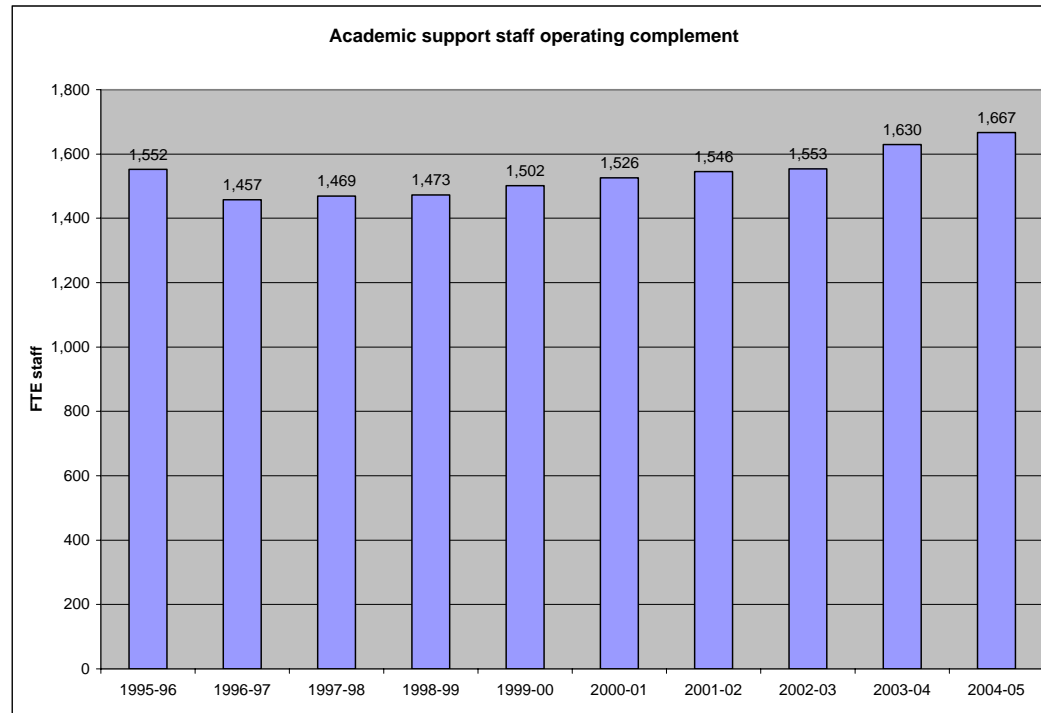


Fig. 5.2A

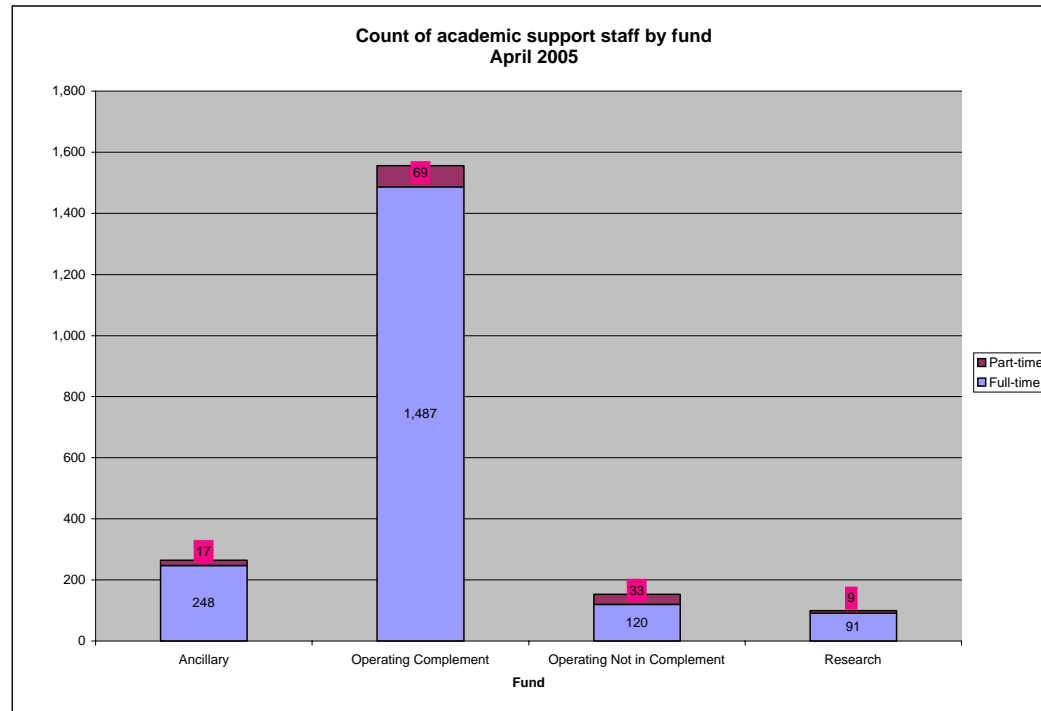


Fig. 5.3A

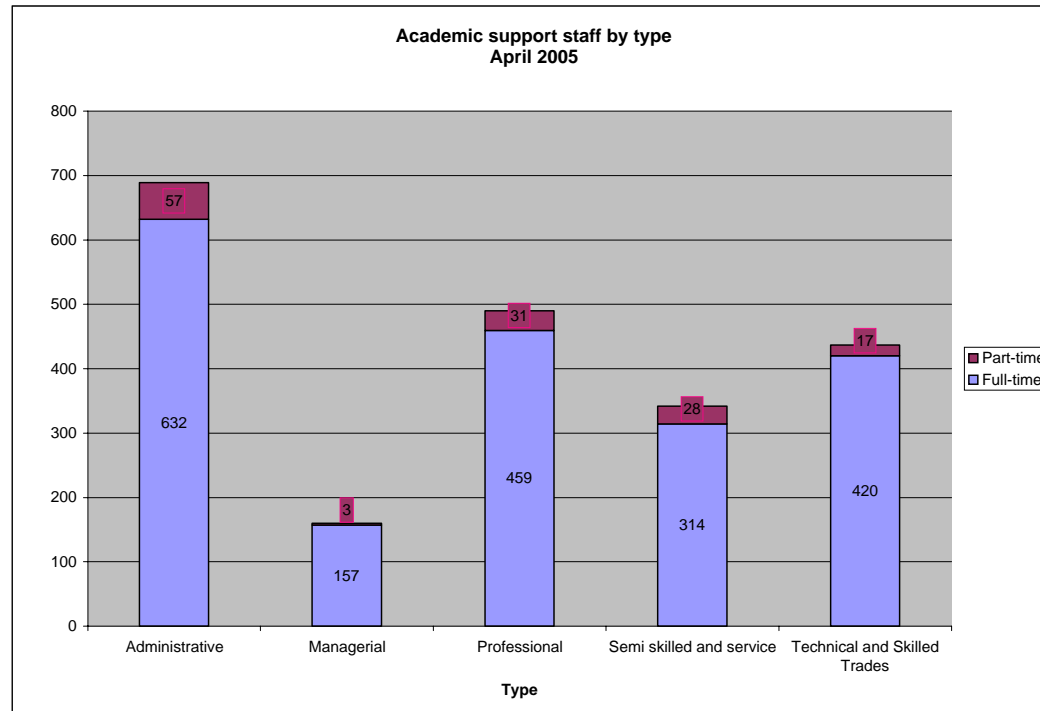


Fig. 6.1A

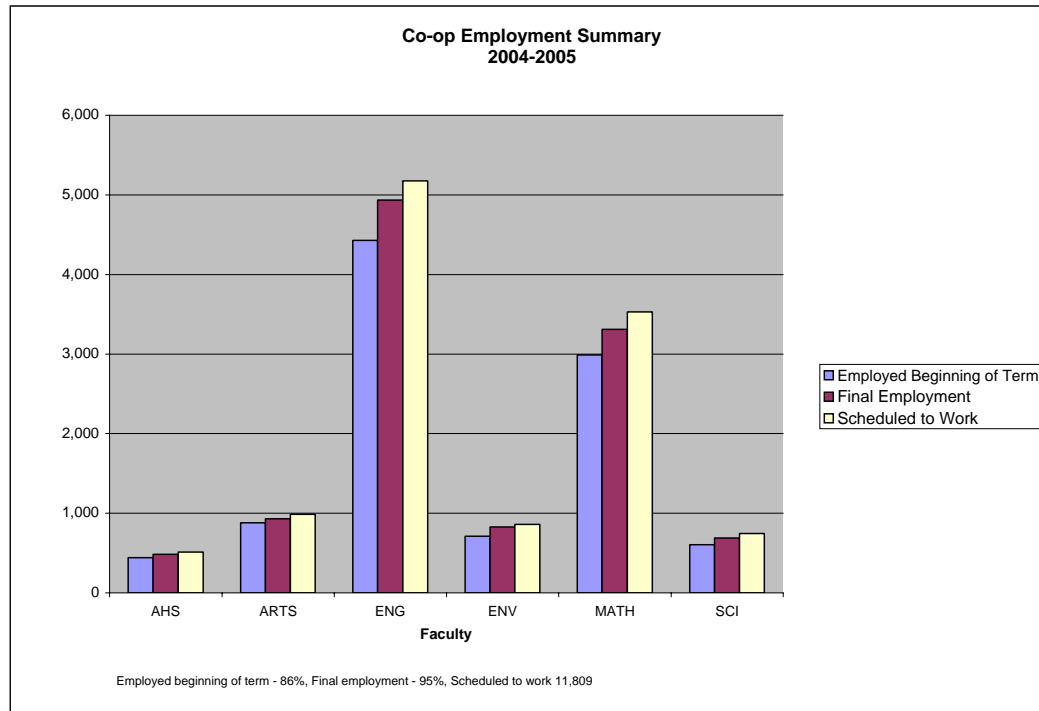


Fig. 6.2A

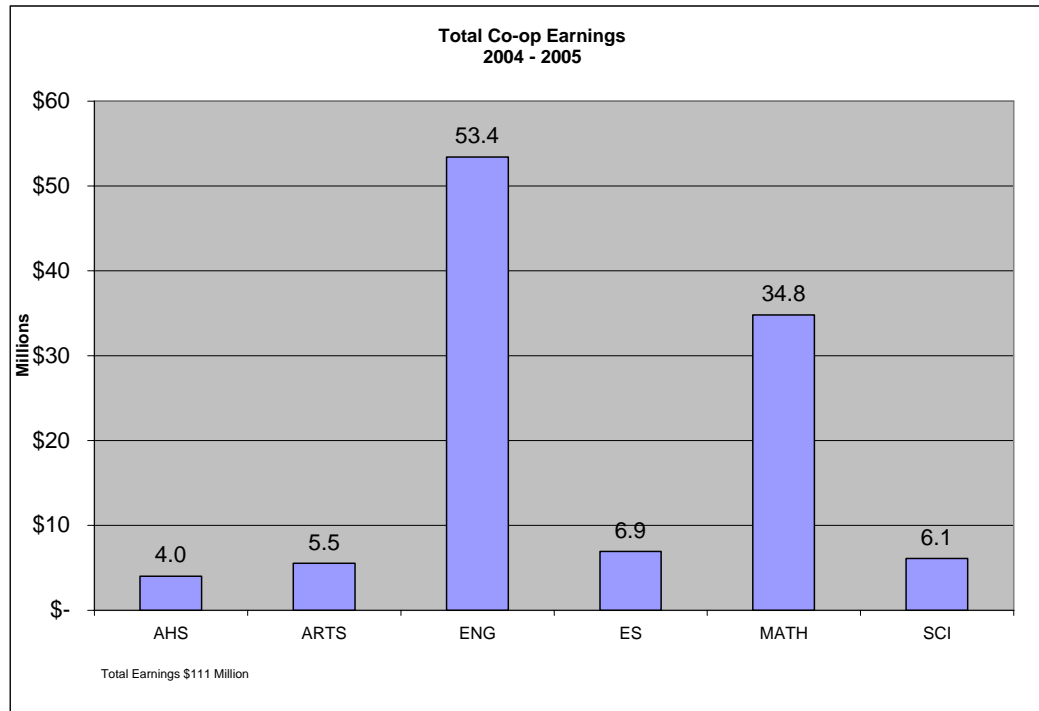


Fig. 7.1A

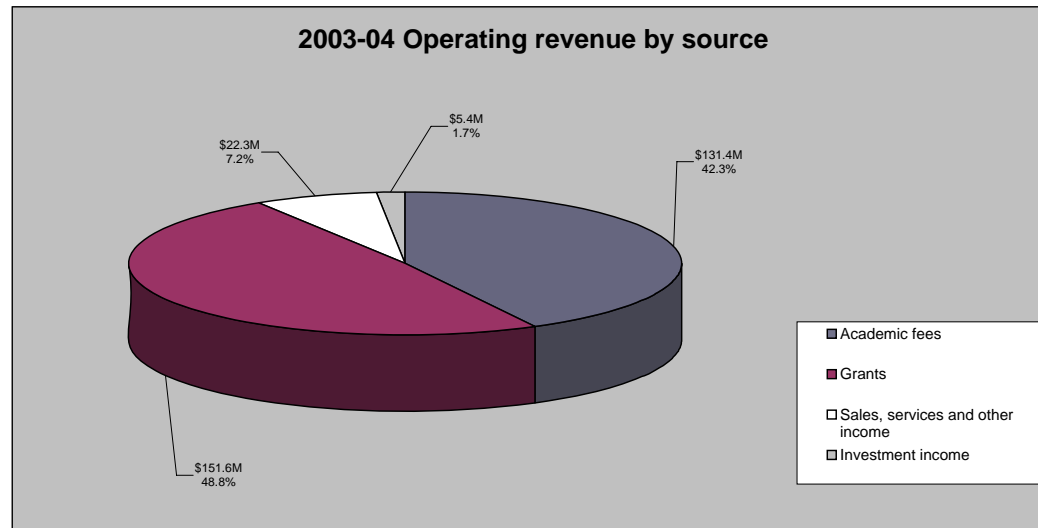


Fig. 7.2A

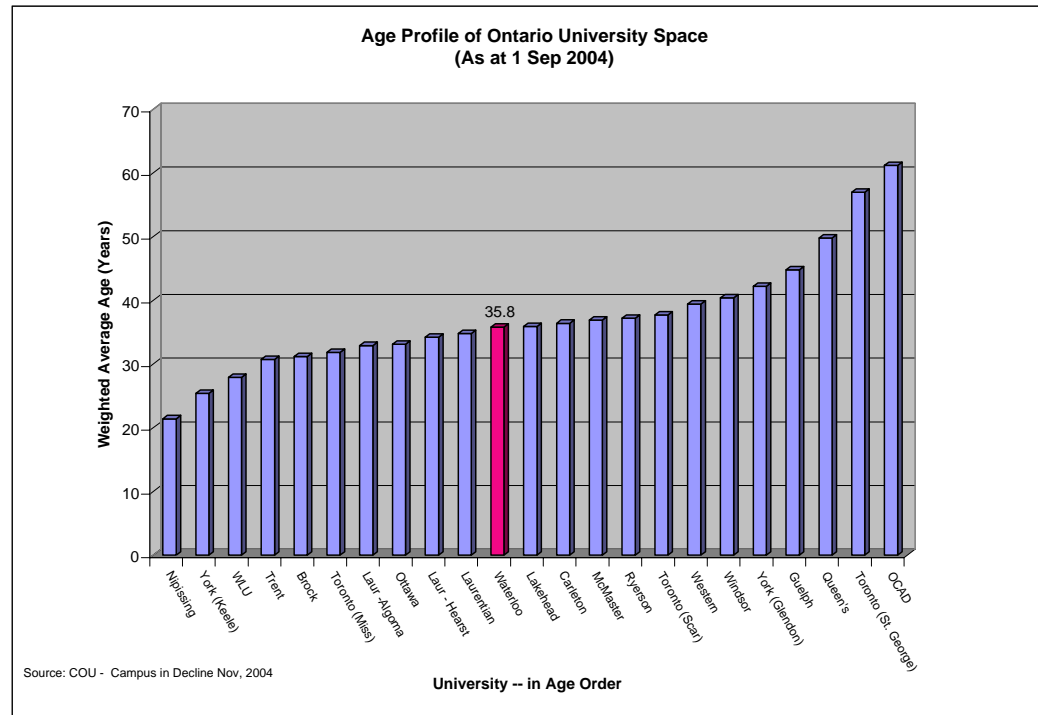


Fig. 7.3A

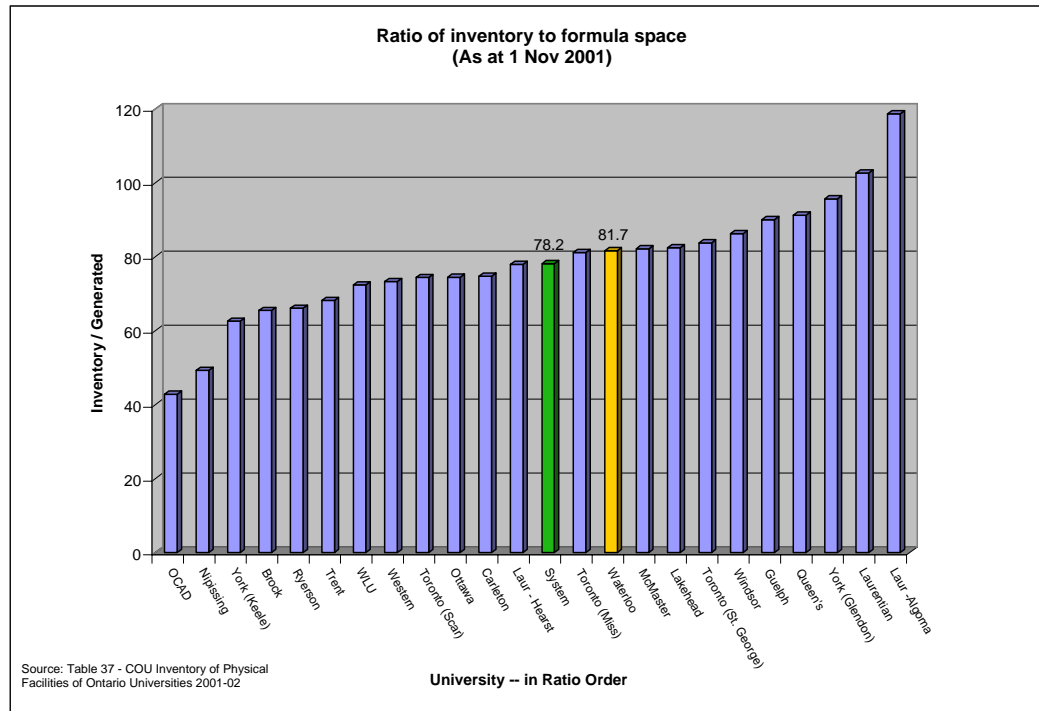


Fig. 7.3B

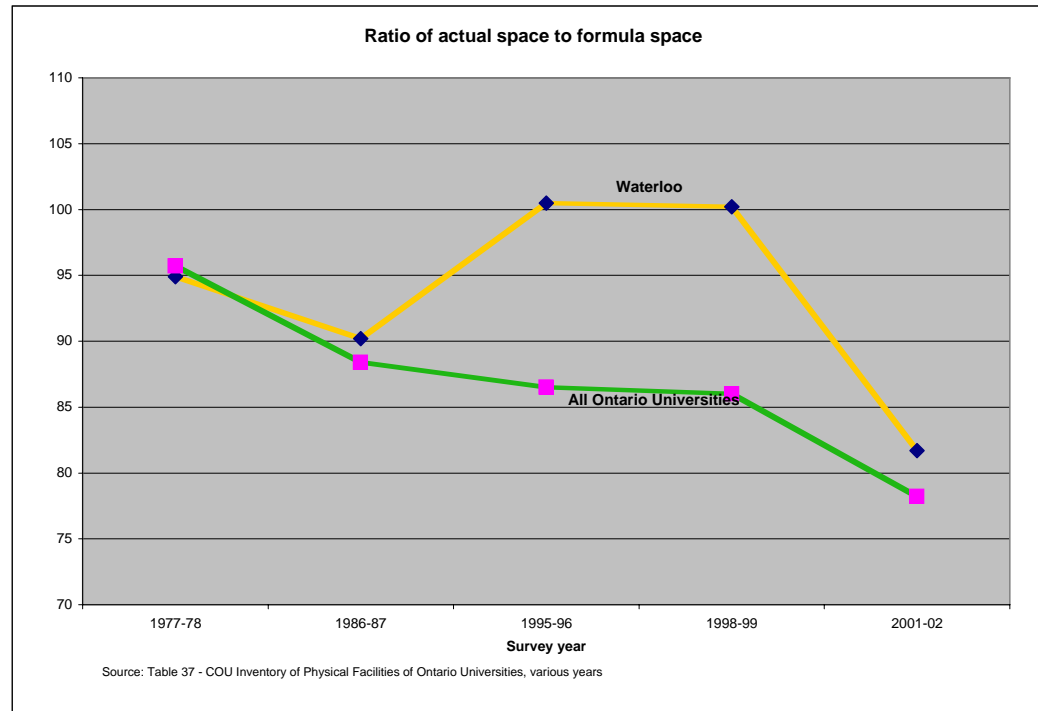


Fig. 8.1A

<i>Maclean's Statistics on Alumni Donations</i>	
	To be submitted Aug. 2005
# Alumni with Good Addresses (cumulative 5-year total 2000-04)	374,234
# Alumni Donors (cumulative 5-year total 2000-04)	71,426
% participation	19%

Fig. 8.2A

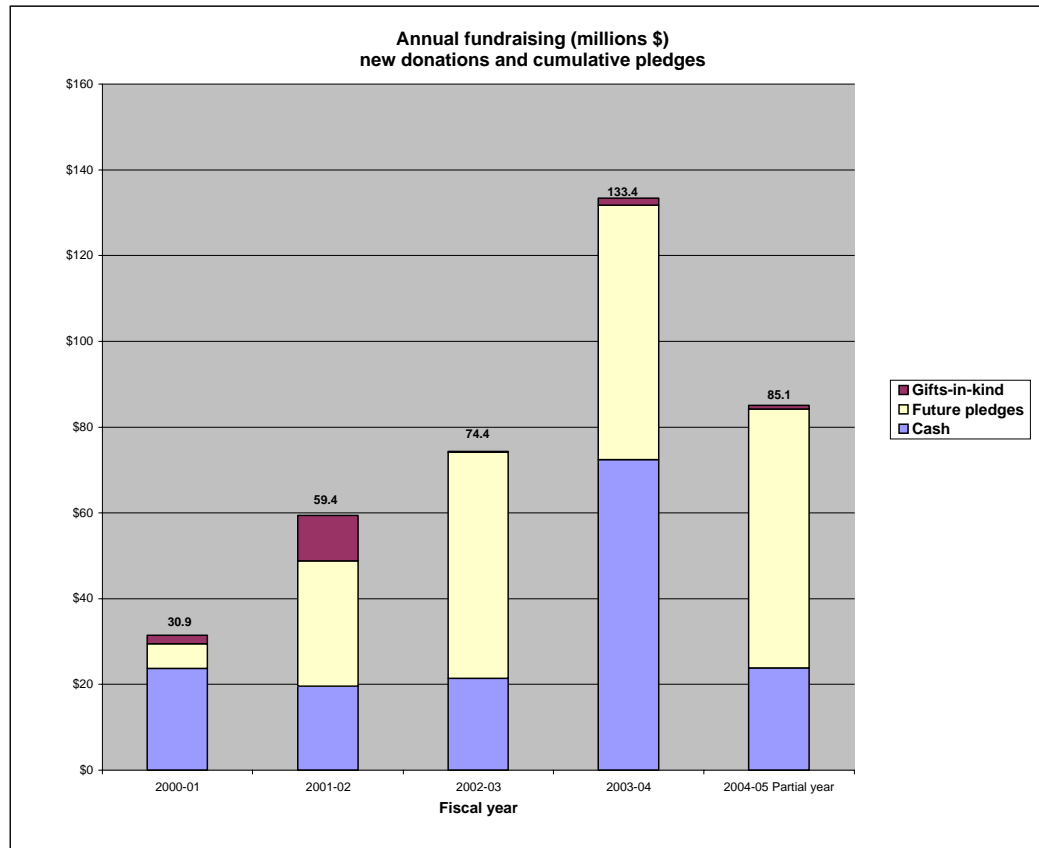


Fig. 8.3A

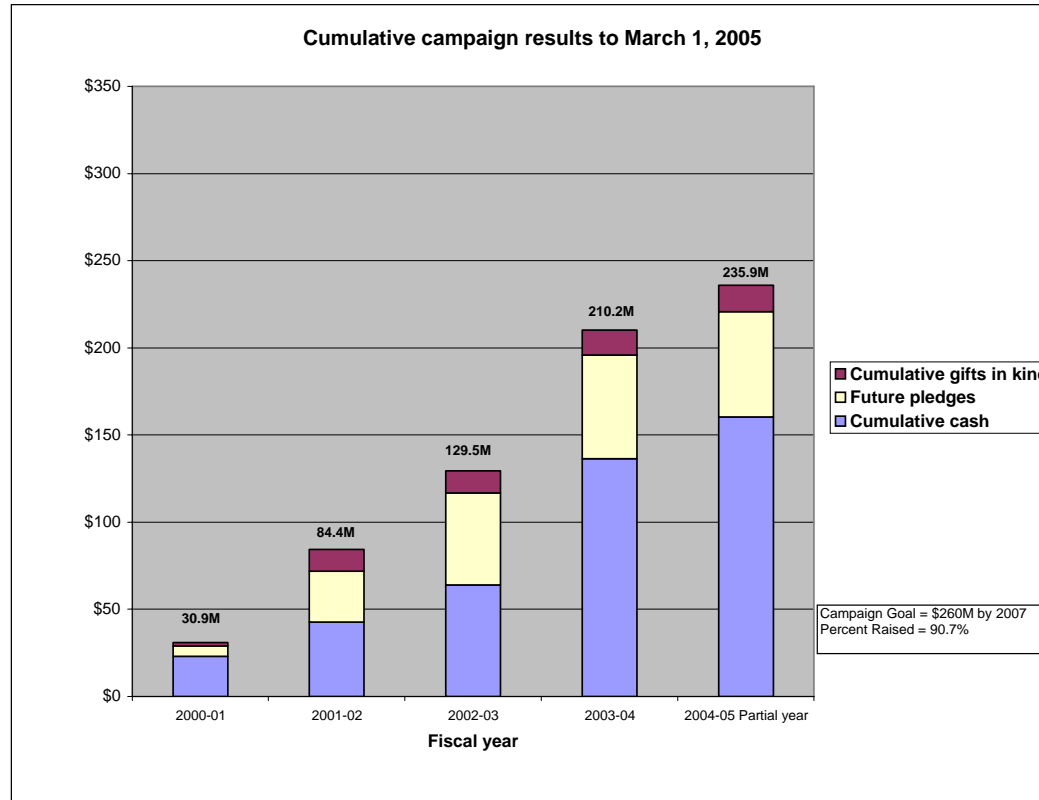


Fig. 8.4A

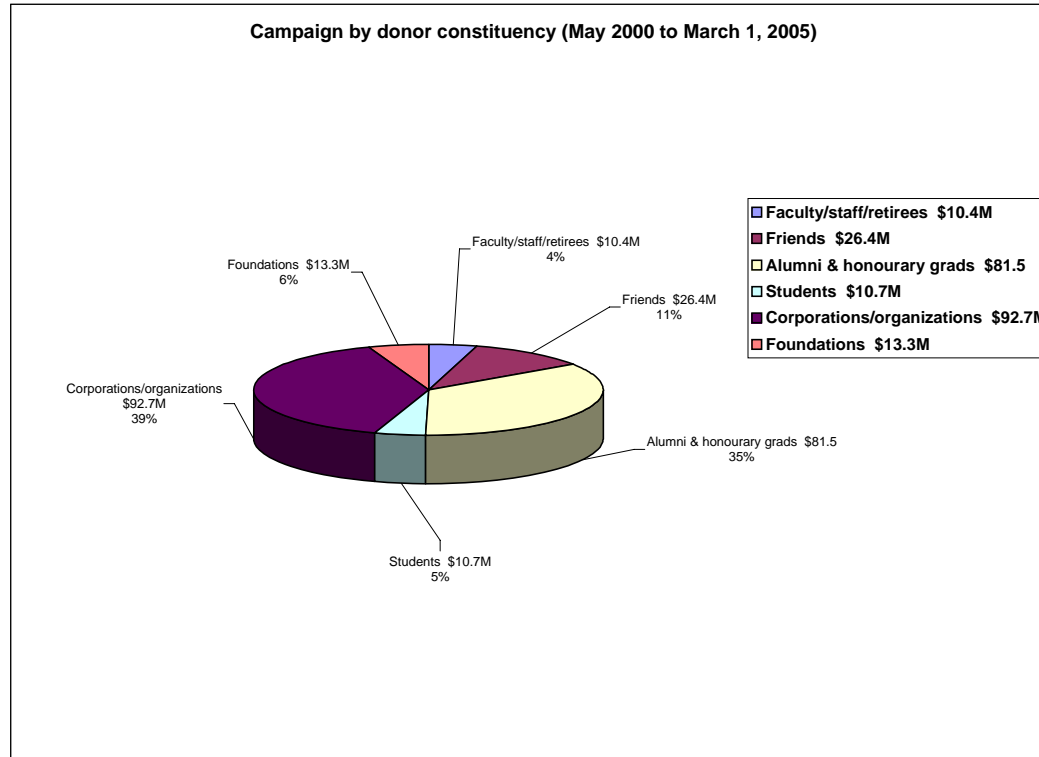


Fig. 8.5A

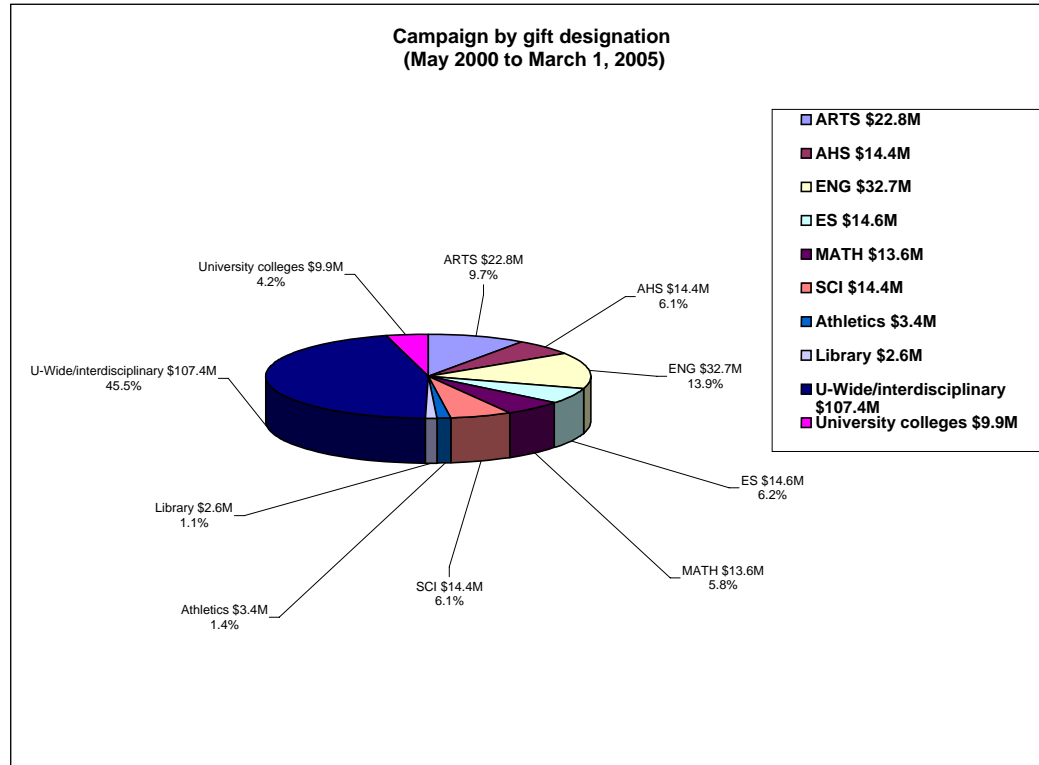


Fig. 9.1A Source: Association of Universities and Colleges of Canada

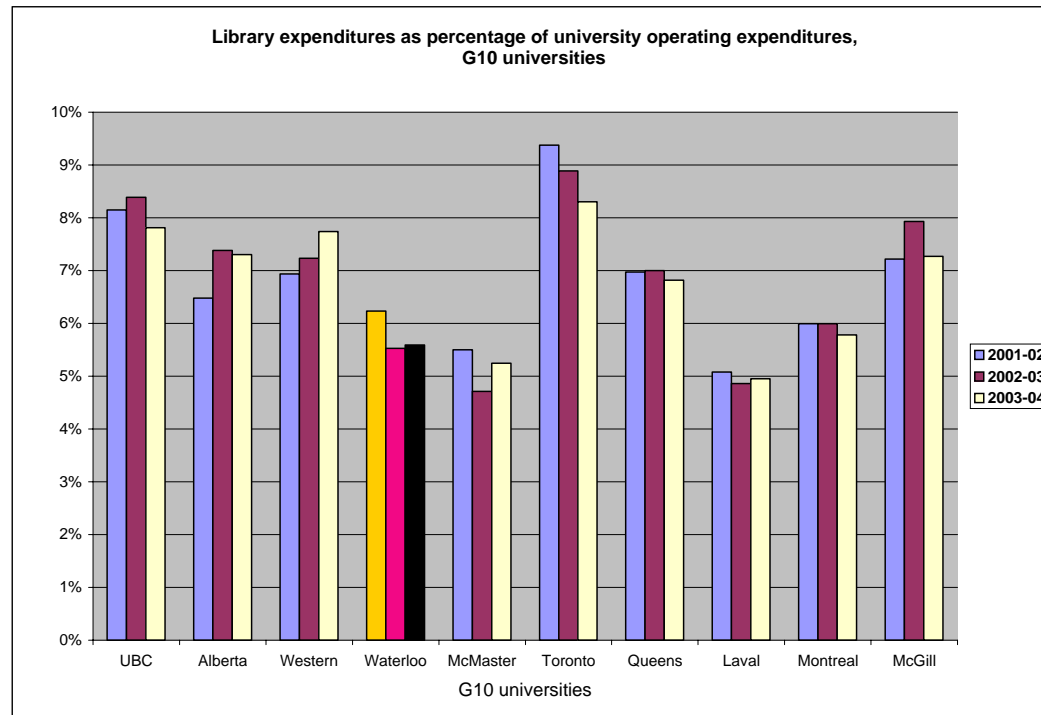


Fig. 9.2A Source: Association of Universities and Colleges of Canada

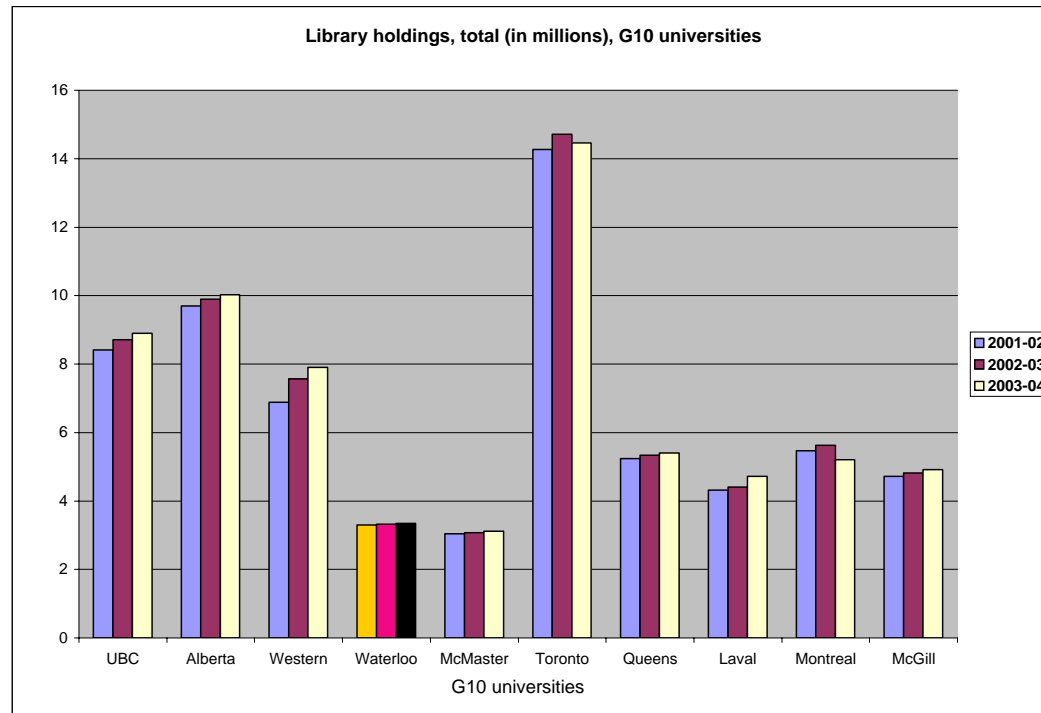


Fig. 9.2B Source: Association of Universities and Colleges of Canada

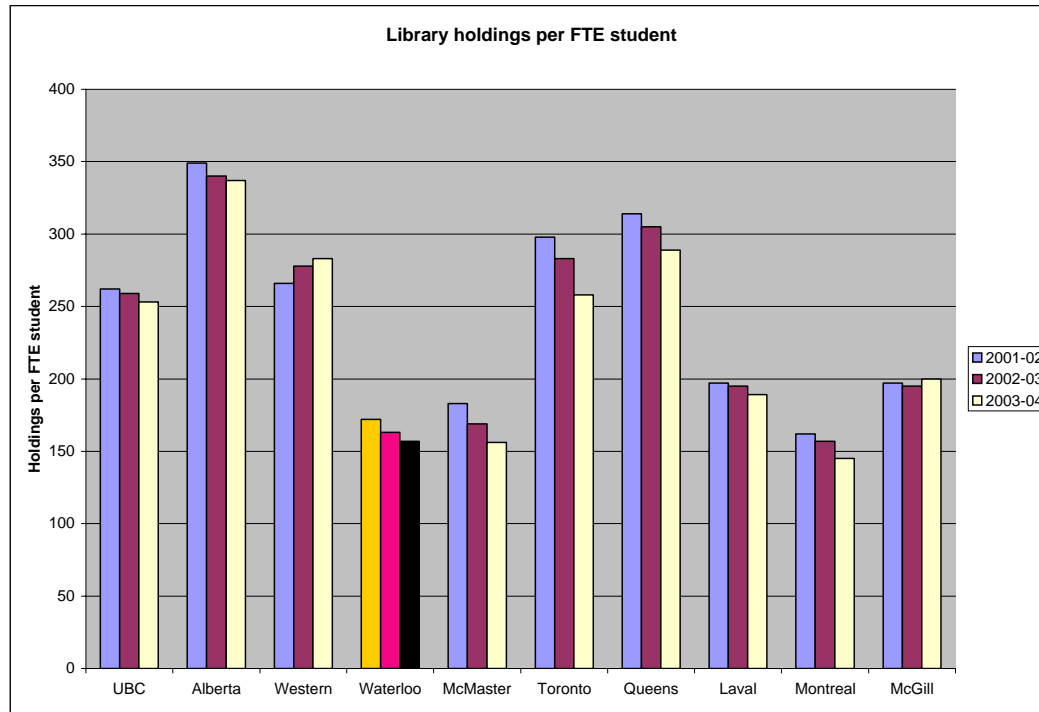


Fig. 9.2C

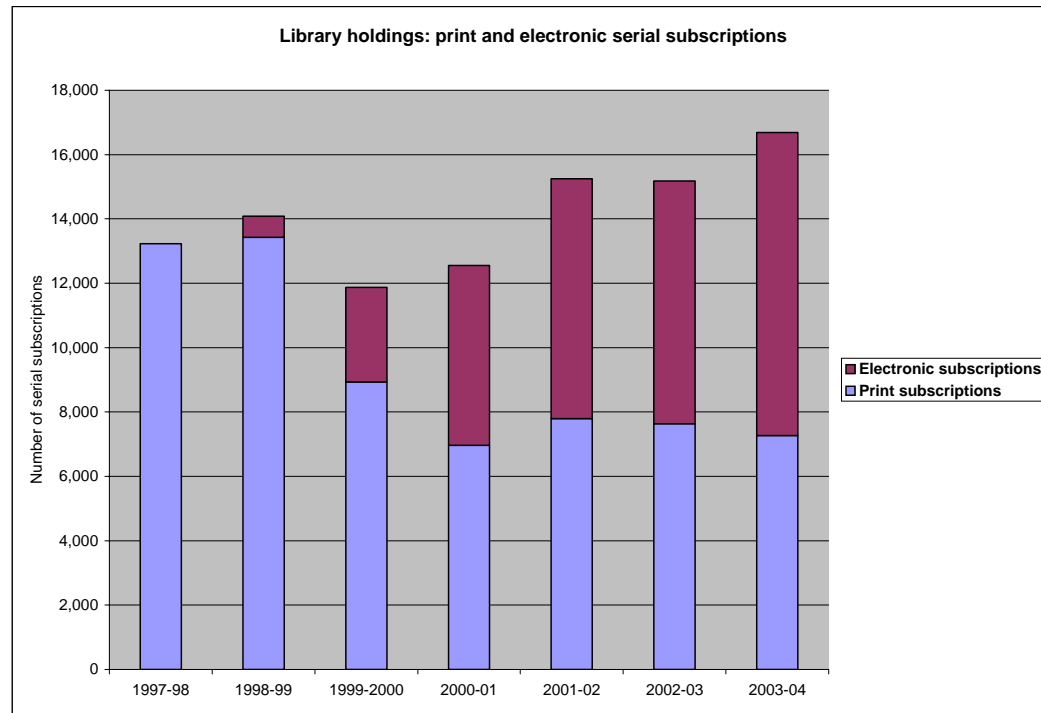


Fig. 9.2D

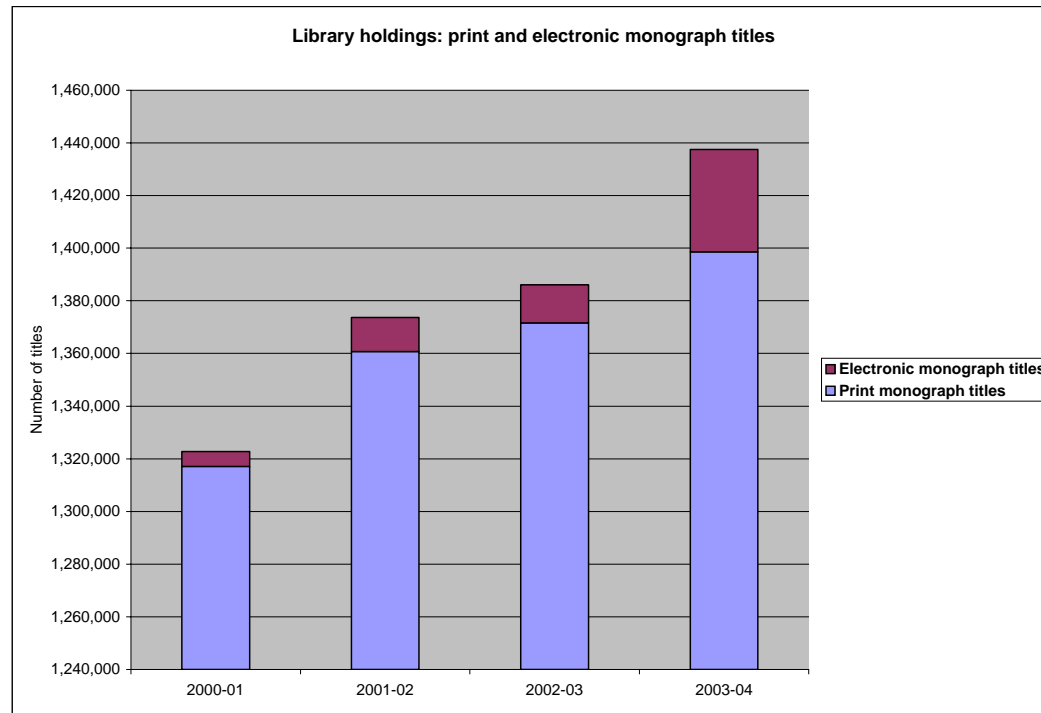


Fig. 9.2E

