

DIALOG awards Michael Evamy Scholarship to Julia Nakanishi to explore architecture's role in cultural sustainability for rural areas experiencing depopulation

EDMONTON, April 12, 2019 - How can architects and designers facilitate cultural sustainability, education, and human connections to landscape in shrinking rural regions? Julia Nakanishi, a Masters of Architecture student at University of Waterloo, has been awarded \$5000 to find out.

Nakanishi's research proposal entitled *New Commons: Designing for Cultural Sustainability in Japan's Shrinking Regions* has been awarded the 2019 Scholarship in Honour of Michael Evamy.

"The international building industry currently depends on urban and economic growth, and declining populations and economies pose a challenge for contemporary architects. My research will consist of fieldwork and design proposals in Japan's shrinking rural areas. By designing for new micro-economies and rural lifestyles, I hope to show that architecture can serve to reassemble vanishing communities."

-Julia Nakanishi, Michael Evamy Scholarship Recipient

DIALOG's selection committee of the Michael Evamy Scholarship was impressed with her proposal that explores this global issue in a Japanese context, knowing that her findings can be applied to rural regions around the world that are experiencing depopulation.

"The exploration of architecture as a means of preserving culture and human connections to landscape intrigued the selection committee. It is particularly interesting to explore this idea at a time when increased urbanization and depopulation is directly affecting rural communities around the world. The results of her study in a Japanese context will be fascinating, and has potential to apply to rural communities globally that are facing this challenge."

-Donna Clare, DIALOG principal and selection committee member.

This year, DIALOG received a wide range of proposals that were all very strong and worthy of support. There were a few recurring themes amongst the submissions from six architecture schools across Canada. It is delightful to see that young talent entering the industry are exploring important topics like conserving resources, the effects of urbanization and globalization, housing affordability, and the role technology plays in solving these growing challenges.

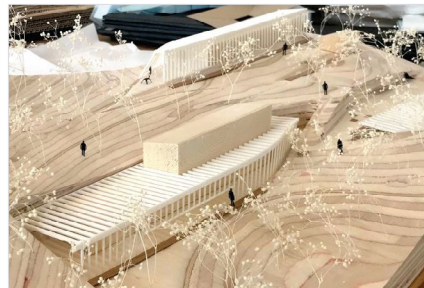
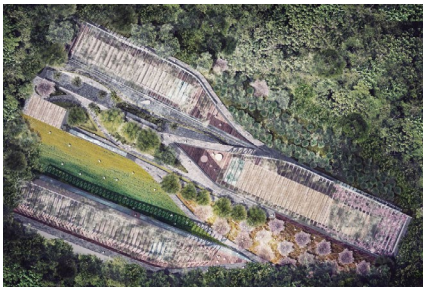


Julia Nakanishi, 2019 Michael Evamy Scholarship Recipient

DIALOG established the Michael Evamy Scholarship Foundation to honour the memory of Michael Evamy, a partner instrumental in building its integrated practice from 1966 to 1993. The award provides financial assistance to the selected Canadian student attending a Canadian school of architecture in the second last year of study, in order to undertake a specific research project in a field of interest to them. The intent of the study is to enrich and advance the candidate's personal and professional experience and knowledge on a topic relevant to the practice of Architecture.

The value of the award is \$5000. A secondary amount up to \$3000 is available for project related expenses, including travel expenses, during the course of the investigation. At the end of their studies, the recipient visits all of DIALOG's Canadian studios to share their research findings with the local design communities.

The next call for submissions for the Michael Evamy Scholarship will be issued in January 2020.



[Images available for download here.](#) Please credit Julia Nakanishi.

DIALOG IS CHANGING THE CONVERSATION IN AN INCREASINGLY COMPLEX WORLD.

DIALOG is a fully integrated and multidisciplinary team of architects, engineers, interior designers, landscape architects, urban designers and planners. Our portfolio of work and influence spans across Canada and around the world. Working from five studios in Vancouver, Calgary, Edmonton, Toronto and San Francisco, our approach is one of open, innovative collaboration with our clients and each other to deliver outstanding solutions that make a lasting and positive contribution to our clients, their communities, and the environment.



dialogdesign.ca



[@DIALOG](https://twitter.com/DIALOG)



[@DIALOGdesign](https://www.instagram.com/DIALOGdesign)

**PLEASE DIRECT ANY
PRESS INQUIRIES TO:**

Gillian Thomson

Communications Specialist
DIALOG - Edmonton Studio
gthomson@dialogdesign.ca
780.917.4697