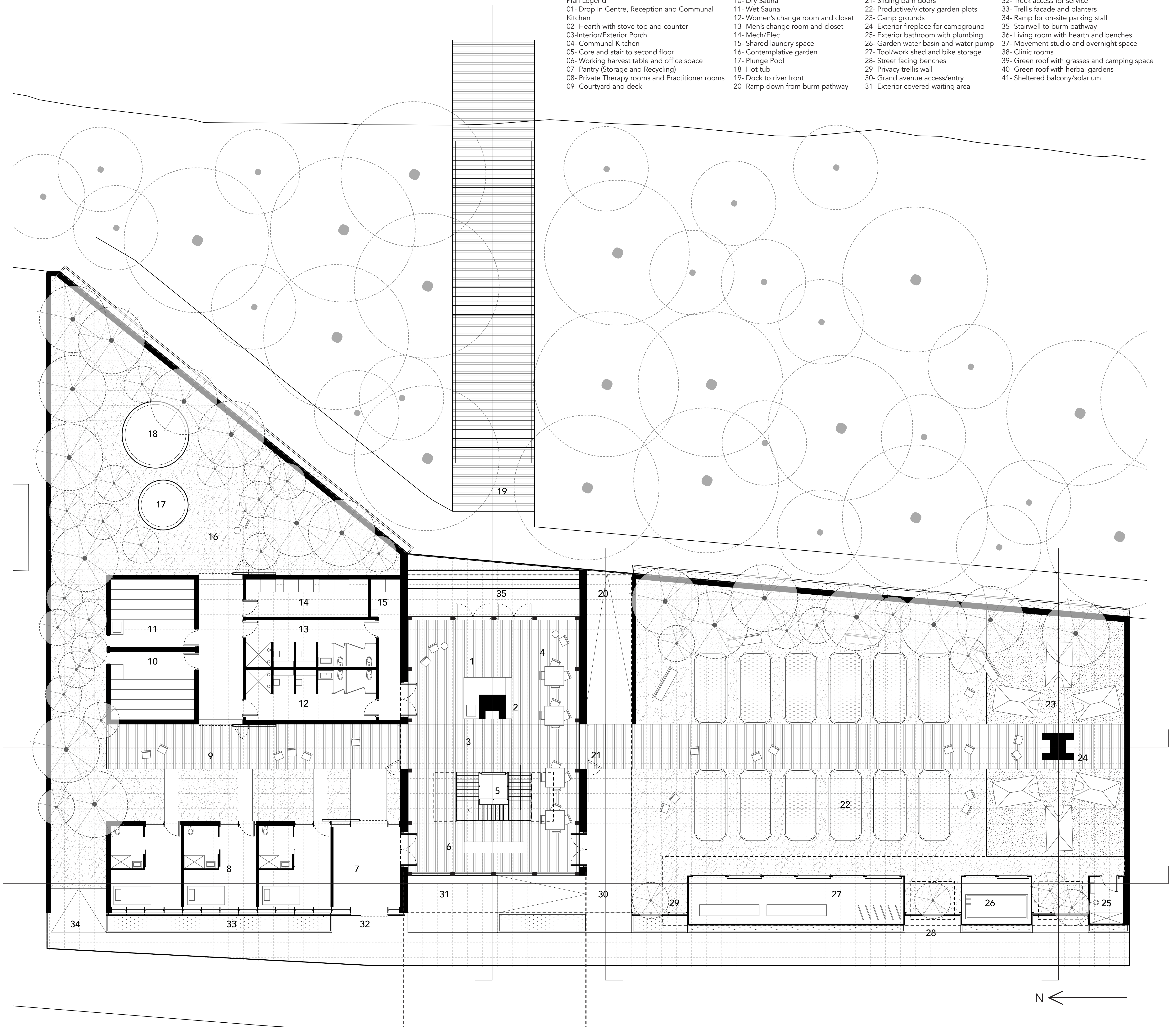


THE HOMESTEAD

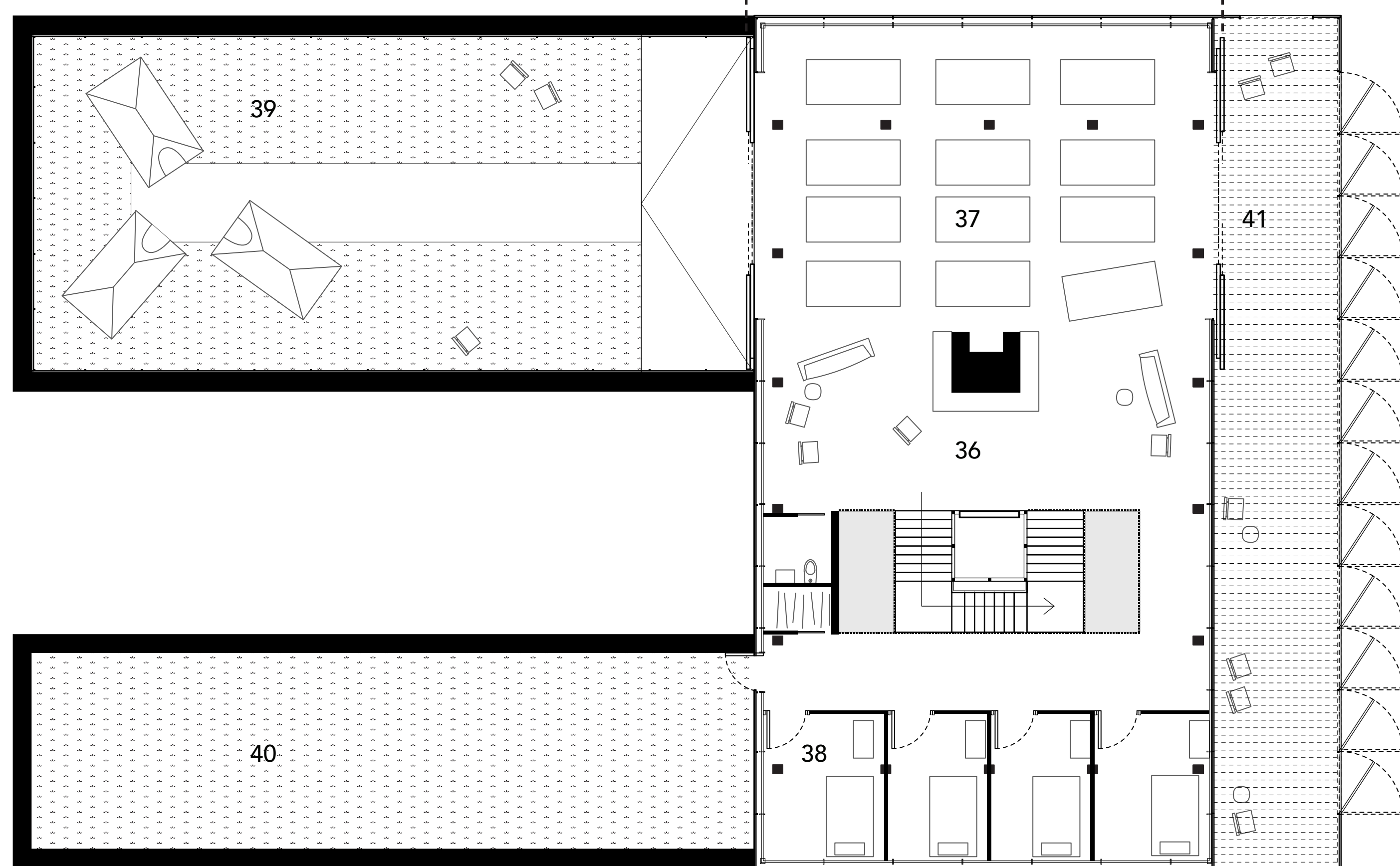
Galt's Wellness Centre

DROP IN CENTRE PLANS

- | | | | |
|--|------------------------------------|---------------------------------------|---|
| Plan Legend | 10- Dry Sauna | 21- Sliding barn doors | 32- Truck access for service |
| 01- Drop In Centre, Reception and Communal Kitchen | 11- Wet Sauna | 22- Productive/victory garden plots | 33- Trellis facade and planters |
| 02- Hearth with stove top and counter | 12- Women's change room and closet | 23- Camp grounds | 34- Ramp for on-site parking stall |
| 03- Interior/Exterior Porch | 13- Men's change room and closet | 24- Exterior fireplace for campground | 35- Stairwell to burn pathway |
| 04- Communal Kitchen | 14- Mech/Elec | 25- Exterior bathroom with plumbing | 36- Living room with hearth and benches |
| 05- Core and stair to second floor | 15- Shared laundry space | 26- Garden water basin and water pump | 37- Movement studio and overnight space |
| 06- Working harvest table and office space | 16- Contemplative garden | 27- Tool/work shed and bike storage | 38- Clinic rooms |
| 07- Pantry (Storage and Recycling) | 17- Plunge Pool | 28- Street facing benches | 39- Green roof with grasses and camping space |
| 08- Private Therapy rooms and Practitioner rooms | 18- Hot tub | 29- Privacy trellis wall | 40- Green roof with herbal gardens |
| 09- Courtyard and deck | 19- Dock to river front | 30- Grand avenue access/entry | 41- Sheltered balcony/solarium |
| | 20- Ramp down from burn pathway | 31- Exterior covered waiting area | |



Ground Floor Plan - 1:100



2nd Storey Plan and Green Roof Systems