

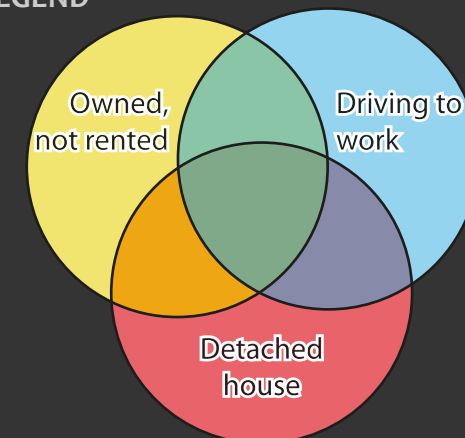
# SHERBROOKE

Census Metropolitan Area

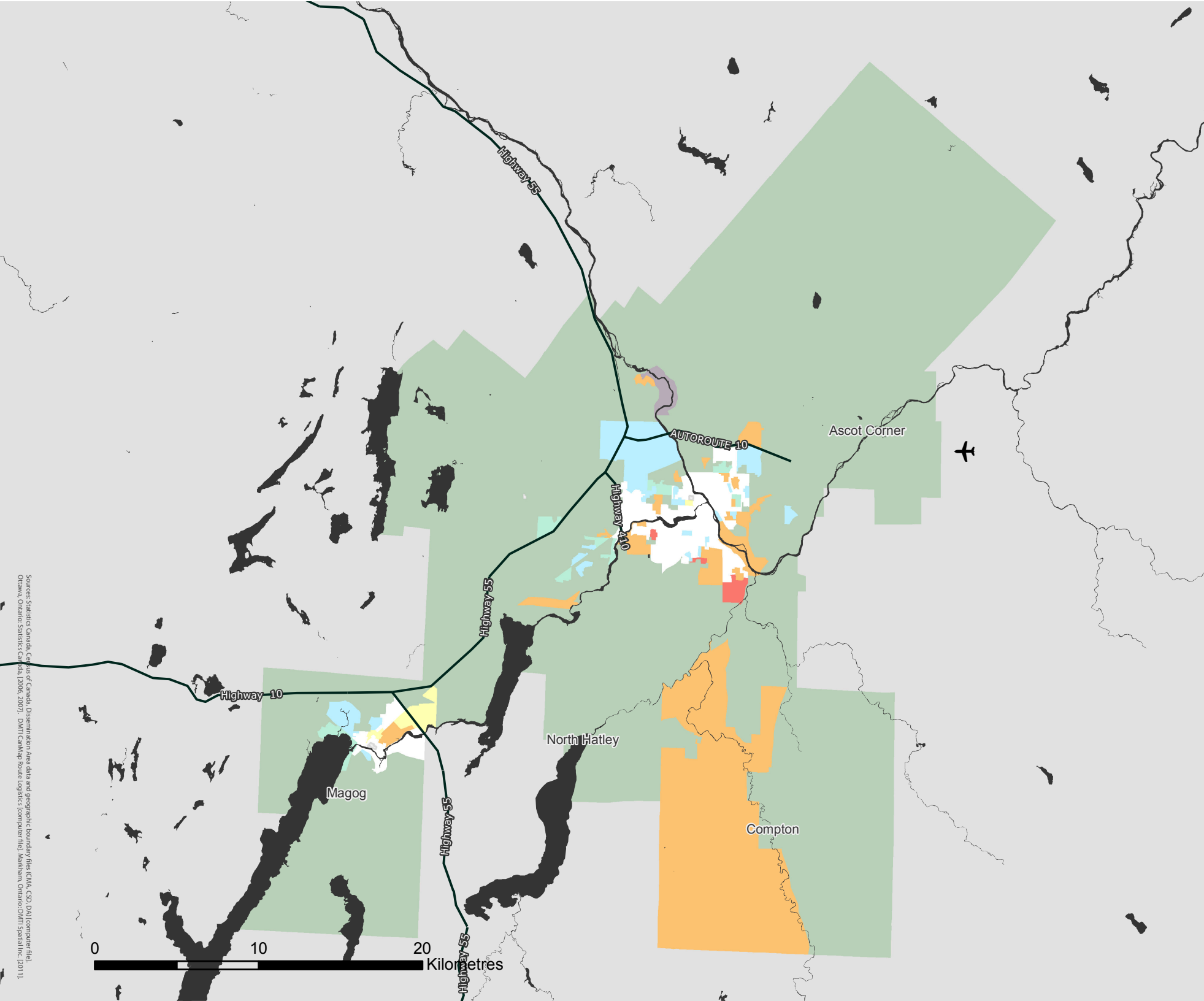
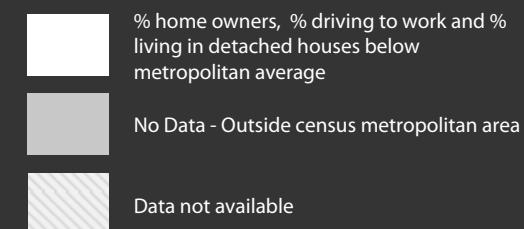
2006 Census Dissemination Area Data:  
Statistics Canada

Atlas of Suburbanisms,  
Global Suburbanisms Research Project

## LEGEND



(percentage greater than metropolitan average)



Sources: Statistics Canada, Census of Canada, Dissemination Area data and geographic boundary files (CMA, CSD, DA) [computer file]. Ottawa: Statistics Canada, 2007. - DMU (Canada) house layout (computer file). Markham: Ontario DMU Spatial Inc. (2011).