

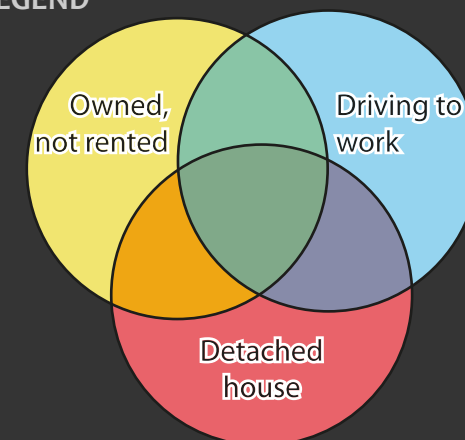
# QUÉBEC

Census Metropolitan Area

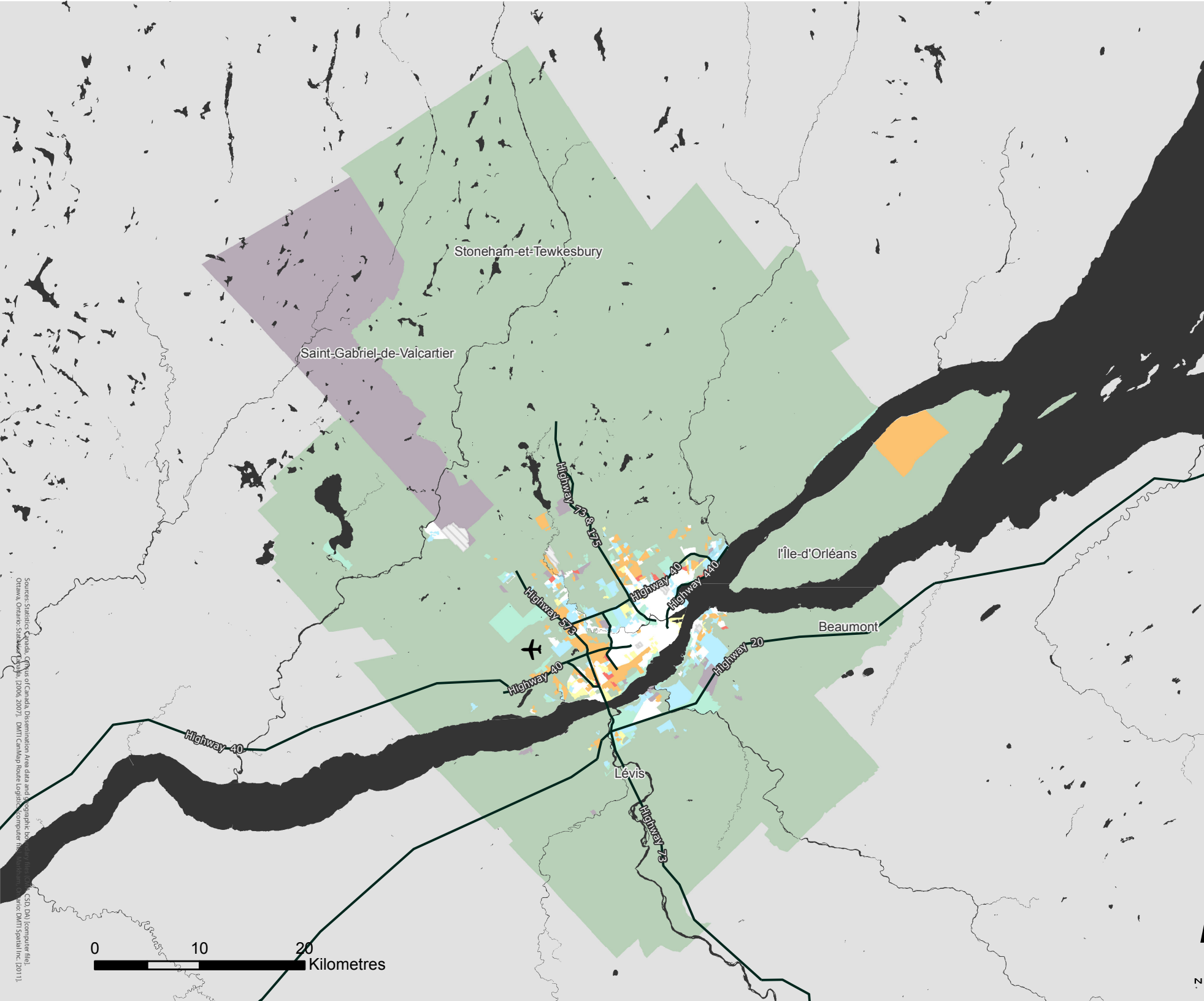
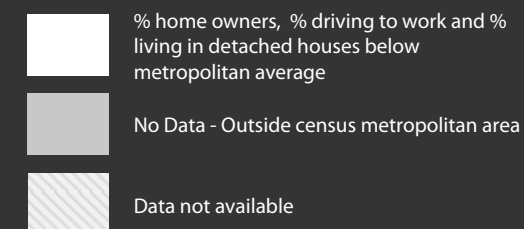
2006 Census Dissemination Area Data:  
Statistics Canada

Atlas of Suburbanisms,  
Global Suburbanisms Research Project

## LEGEND



(percentage greater than metropolitan average)



<http://env-blogs.uwaterloo.ca/atlas/>

Source: Statistics Canada, Census of Canada, Dissemination Area data and Geographic Information System (GIS) files, 2006 (2006-07-01). DM11 Spatial file (2011).  
Ottawa, Ontario: Statistics Canada, 2007. DM11 Spatial file (2011).  
CSO, DA Computer file.  
DM11 Spatial file (2011).