

# GREATER TORONTO AREA

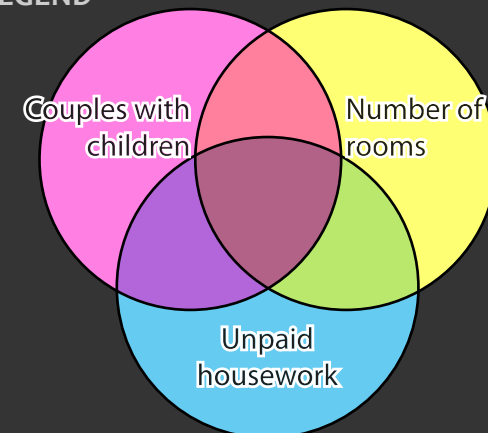
Barrie, Guelph, Hamilton, Kitchener, Oshawa, St. Catharines - Niagara

Census Metropolitan Area




2006 Census Dissemination Area Data: Statistics Canada

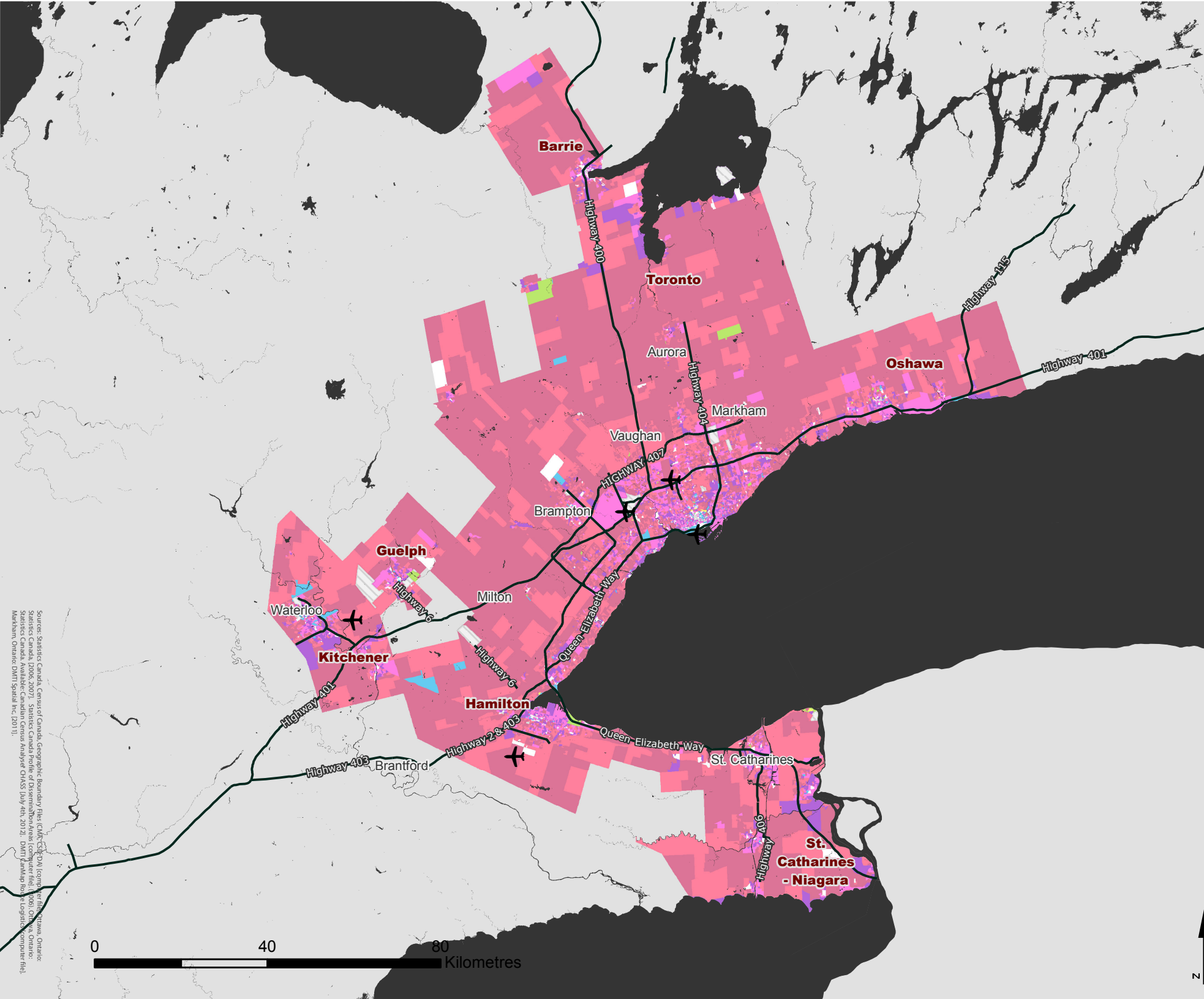
Atlas of Suburbanisms, Global Suburbanisms Research Project

## LEGEND



(Dissemination area average or percentage greater than metropolitan average)

-  % of households that are couples with children, average number of rooms in home and average hours spent on unpaid housework below metropolitan average
-  No Data - Outside census metropolitan area
-  Data not available



Source: Statistics Canada, Census of Canada Geographic Boundaries File (CAGB) (2006), Toronto, Ontario; Statistics Canada, 2006; 2007, Statistics Canada Profile of Dissemination Areas (dissemination file, 2006), Ontario; Statistics Canada, Available: Canadian Census Analyser (CHAS) July 4th, 2012; DMIT (dmittap.ro) Logos; computer file; Markham, Ontario; DMIT Spatial Inc. (2011).



<http://env-blogs.uwaterloo.ca/atlas/>