

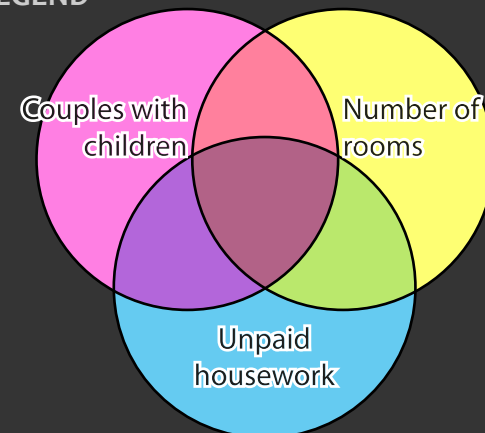
# QUÉBEC

Census Metropolitan Area




2006 Census Dissemination Area Data:  
Statistics Canada

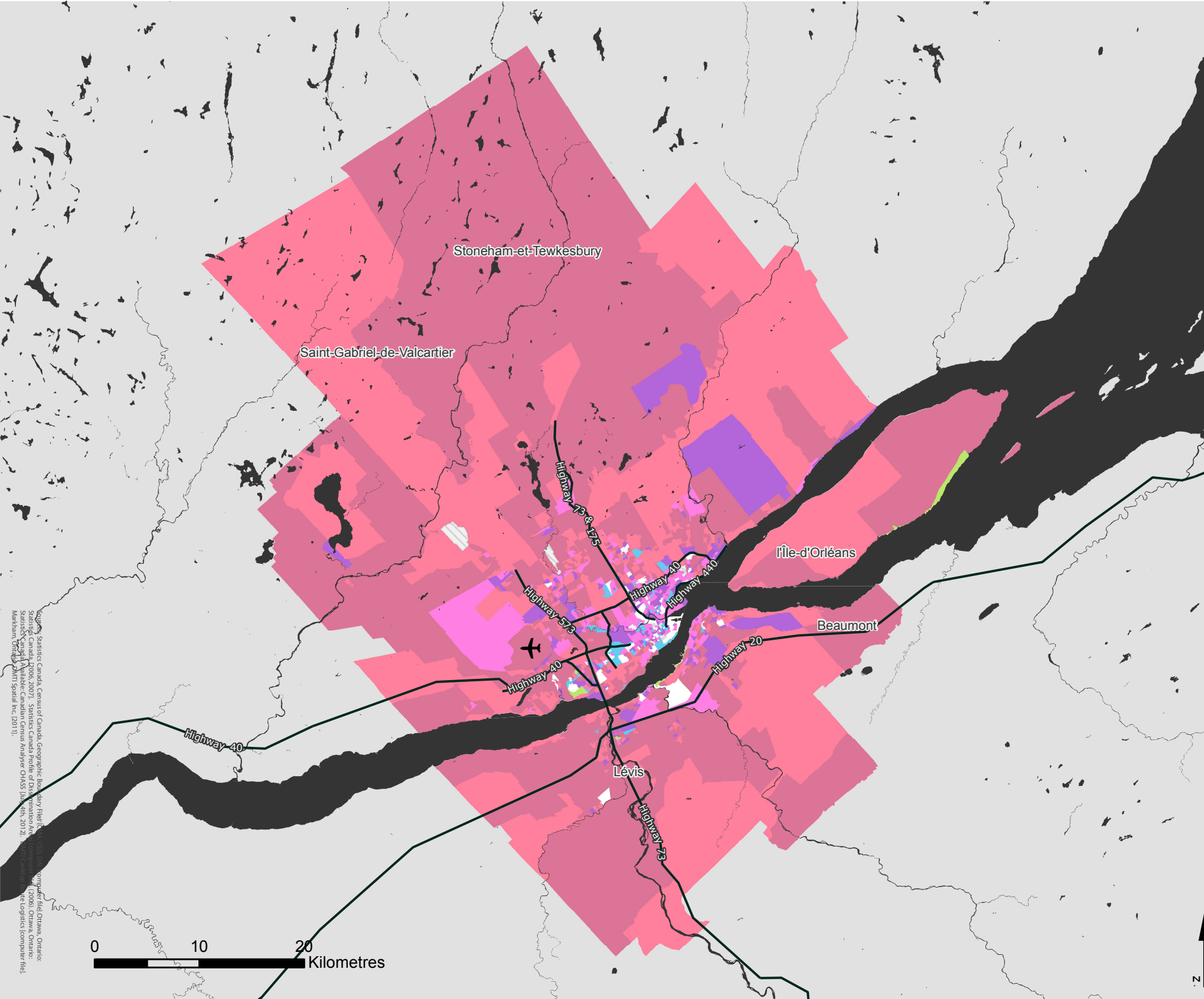
Atlas of Suburbanisms,  
Global Suburbanisms Research Project

## LEGEND



(Dissemination area average or percentage  
greater than metropolitan average)

-  % of households that are couples with children, average number of rooms in home and average hours spent on unpaid housework below metropolitan average
-  No Data - Outside census metropolitan area
-  Data not available



Source: Statistics Canada, Census of Canada, Geographic File, 2006, Catalogue no. 92-591-X, Ottawa, Ontario; Statistics Canada, 2006, 2007, Statistics Canada Profile of Dissemination Areas, Ottawa, Ontario; Statistics Canada, Analyser Canadian Census Analyser CHASS 1.0b, 2011, 2012; Markham, Ontario: 2011 Spatial Inc. (2011).

0 10 20 Kilometres

<http://env-blogs.uwaterloo.ca/atlas/>