

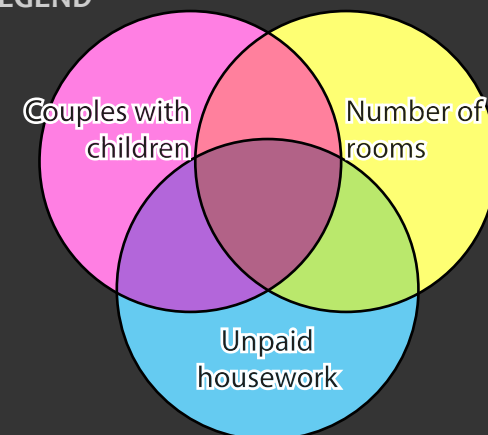
SHERBROOKE

Census Metropolitan Area




2006 Census Dissemination Area Data:
Statistics Canada

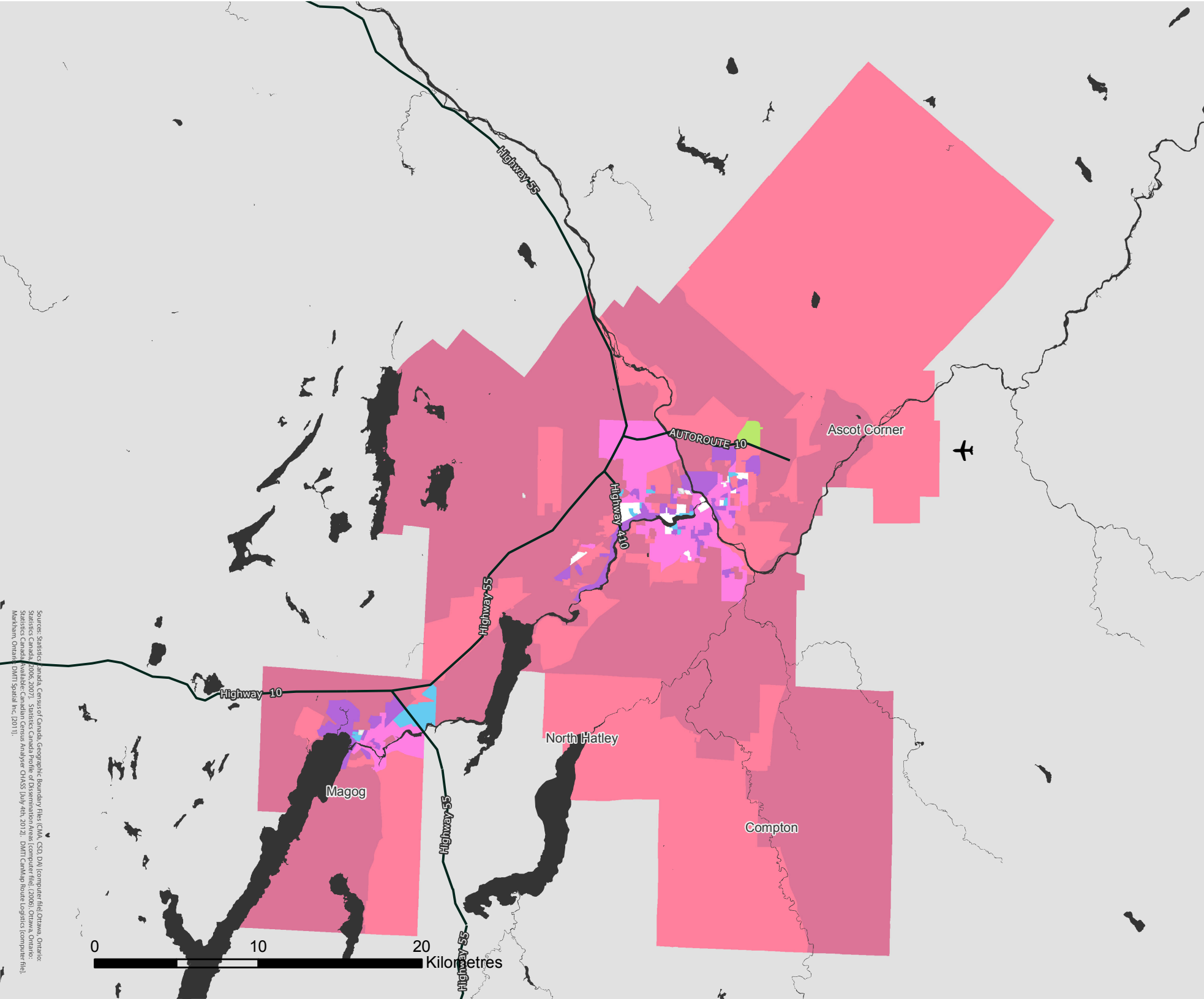
Atlas of Suburbanisms,
Global Suburbanisms Research Project

LEGEND



(Dissemination area average or percentage greater than metropolitan average)

-  % of households that are couples with children, average number of rooms in home and average hours spent on unpaid housework below metropolitan average
-  No Data - Outside census metropolitan area
-  Data not available



Source: Statistics Canada, Census of Canada Geographic Boundary File (CM, CSD, DA), Computer File, Ottawa, Ontario, Statistics Canada, 2006, 2007. Statistics Canada Profile of Dissemination Areas (Computer File, 2006). Ottawa, Ontario: Statistics Canada. Available: Canadian Census Analyser CHASS (July 4th, 2012). DMVT CartMap Route Logistics (Computer File, Markham, Ontario, DMVT Spatial Inc. 2011).