

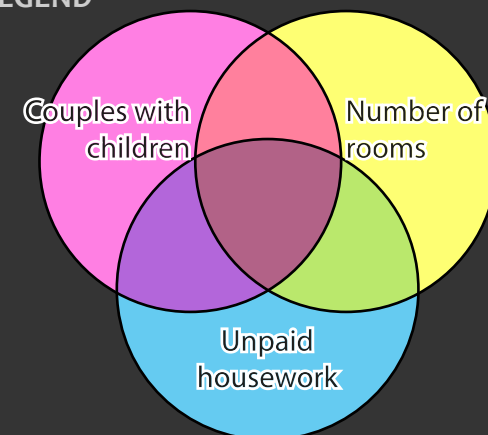
TORONTO

Census Metropolitan Area




2006 Census Dissemination Area Data:
Statistics Canada

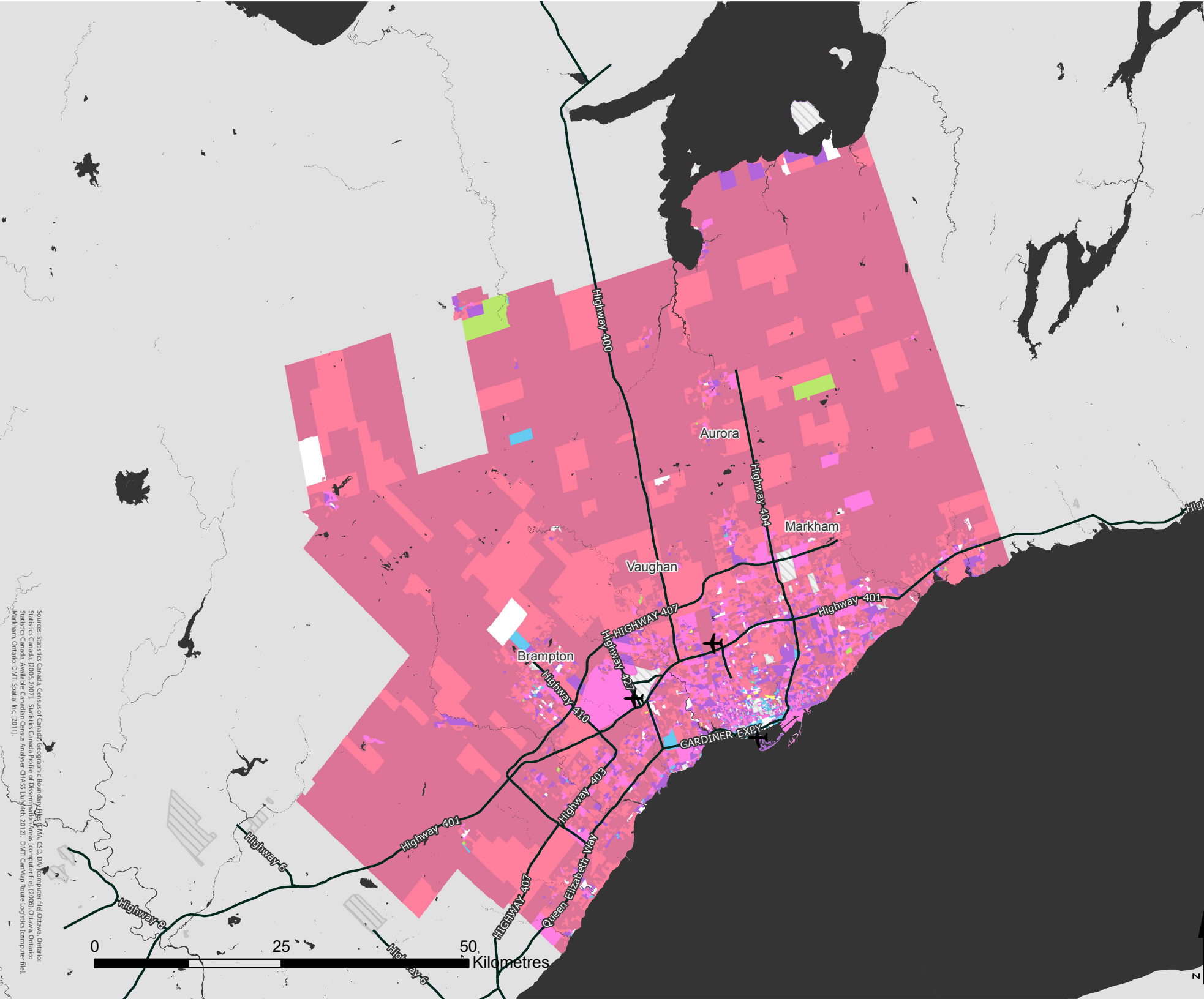
Atlas of Suburbanisms,
Global Suburbanisms Research Project

LEGEND



(Dissemination area average or percentage greater than metropolitan average)

-  % of households that are couples with children, average number of rooms in home and average hours spent on unpaid housework below metropolitan average
-  No Data - Outside census metropolitan area
-  Data not available



Source: Statistics Canada, Census of Canada, Geographic Boundaries, File 9208001, 2006 Census Profile of Dissemination Areas (computer file), 2006, Ottawa, Statistics Canada. Available: Canadian Census Analysis CHASS July 4th, 2010. DMIT Campaign route logistics (computer file), Markham, Ontario: DMIT Spatial Inc. (2011).