

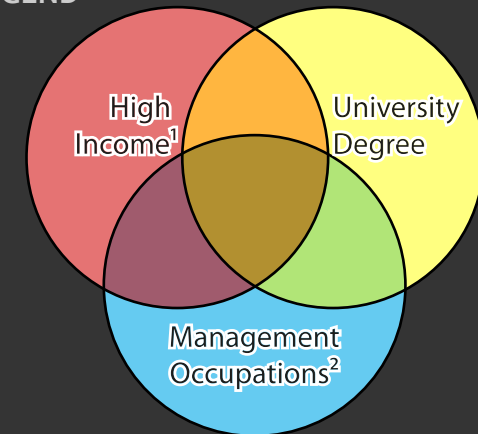
CALGARY

Census Metropolitan Area


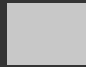

2006 Census Dissemination Area Data:
Statistics Canada

Atlas of Suburbanisms,
Global Suburbanisms Research Project

LEGEND



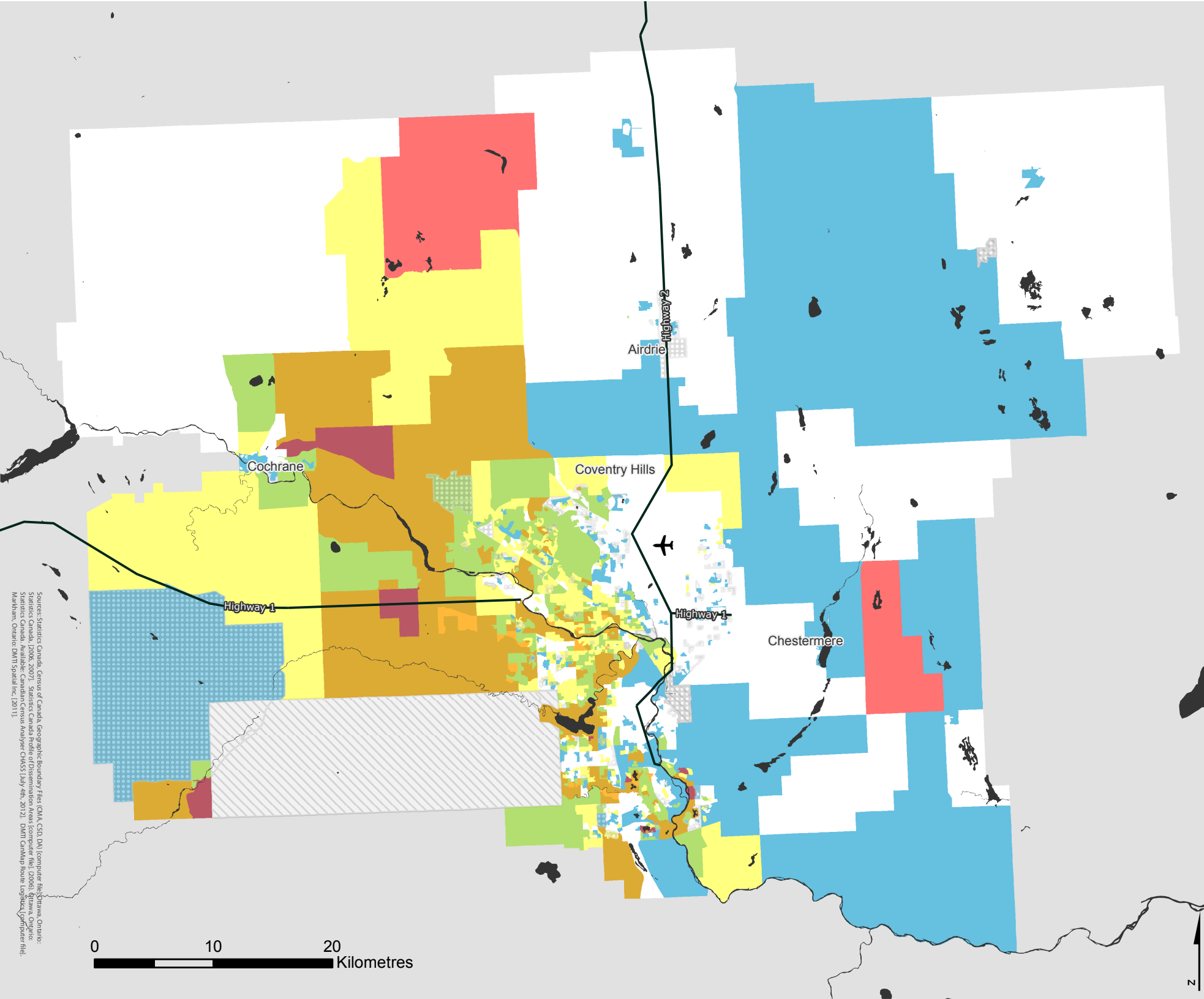
(Dissemination area average or percentage greater than metropolitan average)

-  % with a university degree, and % in management occupations below metropolitan average; and income less than 1.5 times metropolitan average
-  No Data - Outside census metropolitan area
-  Data not available/Income data suppressed

¹ Income in DA is equal to or greater than 1.5 times the metropolitan average individual pre-tax income

² Management Occupations were defined according to the National Occupation Classification 2006 (NOC 2006) and include Senior Management Occupations (NOC A0) and Specialist Managers (NOC A1)

<http://env-blogs.uwaterloo.ca/atlas/>



Source: Statistics Canada, Census of Canada, Geographic Boundary File (GUA, CSD DA) (computer file) (Oshana, Ontario, Statistics Canada, 2006, 2007). Statistics Canada Profile of Dissemination Areas (computer file), 2006. Ottawa, Ontario: Statistics Canada, Available: Canadian Census Analyser (CAAS) (July 4th, 2012). DMIT Carikan Route Logfile (computer file), Markham, Ontario: DMIT Spatial Inc. (2011).