

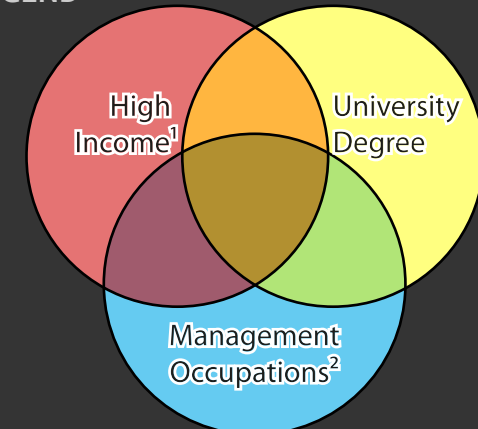
# EDMONTON

Census Metropolitan Area




2006 Census Dissemination Area Data:  
Statistics Canada

Atlas of Suburbanisms,  
Global Suburbanisms Research Project

## LEGEND

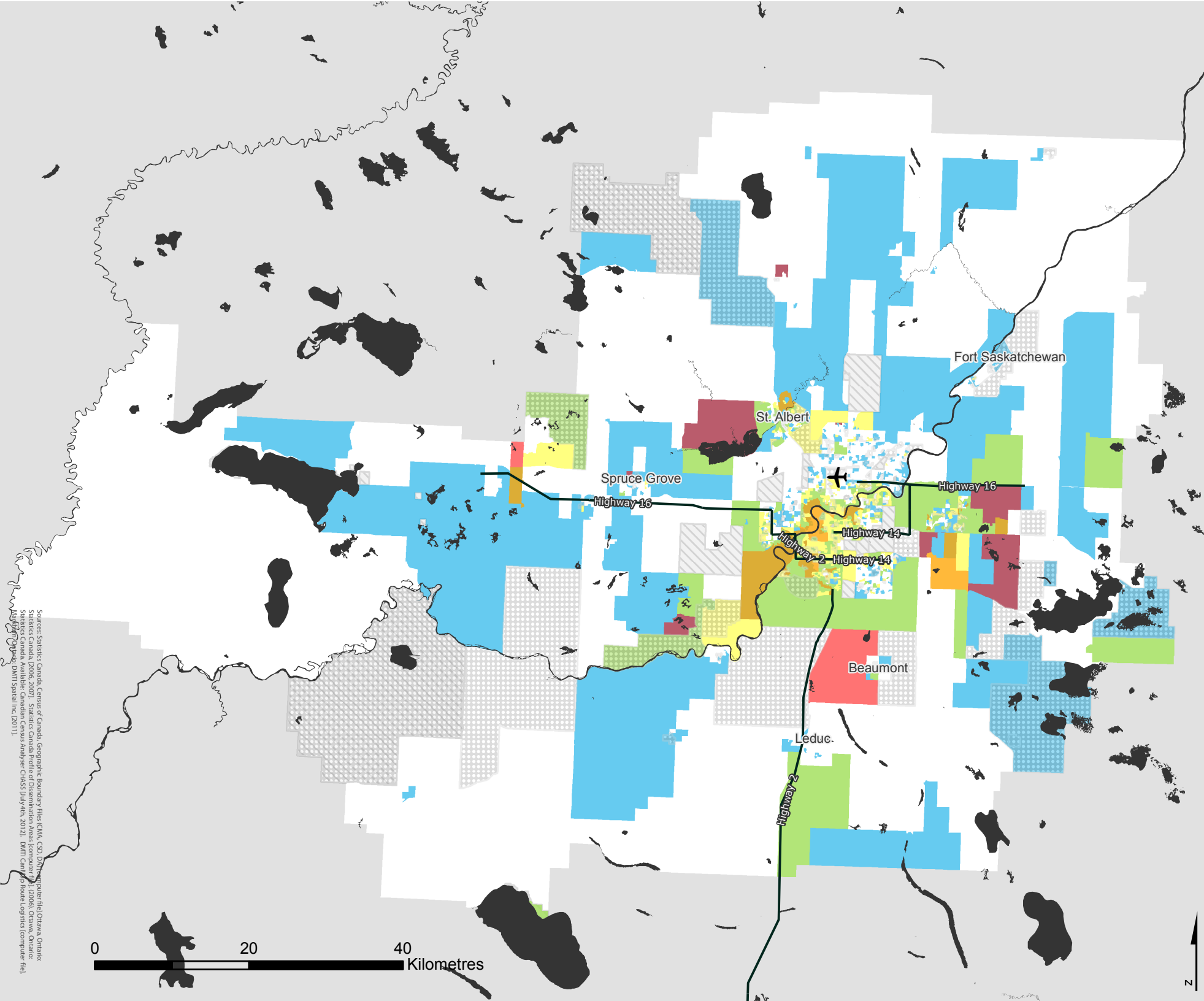


(Dissemination area average or percentage greater than metropolitan average)

-  % with a university degree, and % in management occupations below metropolitan average; and income less than 1.5 times metropolitan average
-  No Data - Outside census metropolitan area
-  Data not available/Income data suppressed

<sup>1</sup> Income in DA is equal to or greater than 1.5 times the metropolitan average individual pre-tax income

<sup>2</sup> Management Occupations were defined according to the National Occupation Classification 2006 (NOC 2006) and include **Senior Management Occupations** (NOC A0) and **Specialist Managers** (NOC A1)



Sources: Statistics Canada, Census of Canada, Geographic Boundary File (CMA, CSD, DMS, and other files), Ottawa, Ontario; Statistics Canada, 2006, 2007; Statistics Canada Profile of Dissemination Areas (compiled by J. L. 2006), Ottawa, Ontario; Statistics Canada, Available: Canadian Census Analyser, CHASS July/Aug. 2012; DMIT Centrifuge Route Logistics Computer File; DMIT Centrifuge DMIT Spatial Inc. (2011)