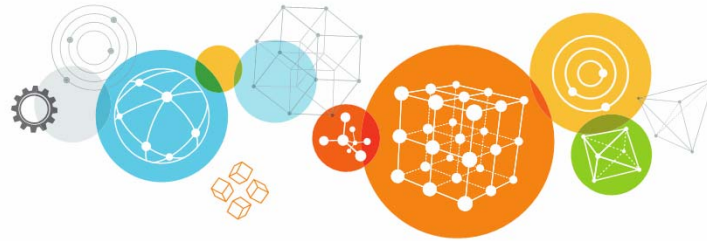
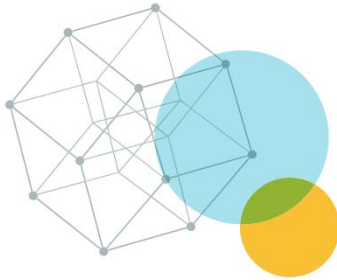


Waterloo Wellington **LHIN**



# Health Innovation in Waterloo Wellington LHIN



# Innovation

A new product, idea or method

# Florence Nightingale



- In 1854, Miss Nightingale was asked by the British government to take over the care of the wounded and sick in the Crimean War barracks in Istanbul.
- She applied the vigorous use of washing and clean water with dramatic results.
- Subsequently, she developed the science of epidemiology by analyzing the results of her innovations.
- She reorganized the entire British military medical system.
- In 1940, it was found that the Army Medical Corps accounting system had been written by Florence in the 1890s.

# Innovation in Waterloo Wellington LHIN





Most people are more comfortable with old problems than with new solutions.

(Anonymous)

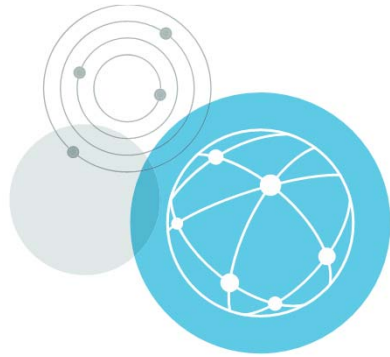
[izquotes.com](http://izquotes.com)

ONTARIO HEALTH CARE SPENDING BUDGET

TEN YEARS AGO \$34B

**NOW \$54B**





**cre·a·tiv·i·ty** (*noun*) the ability to transcend traditional ideas, rules, patterns and relationships to create meaningful new ideas; originality or imagination.



# WHAT MAKES PEOPLE SICK?



50%

**YOUR LIFE**

- Income
- Early Childhood Development
- Disability
- Education
- Social Exclusion
- Social Safety Net
- Gender
- Employment/Working Conditions
- Race
- Aboriginal Status
- Safe and Nutritious Food
- Housing/Homelessness
- Community Belonging

25%

**YOUR HEALTH CARE**

- Access to Health Care
- Health Care System
- Wait Times

15%

**YOUR BIOLOGY**

- Biology
- Genetics

10%

**YOUR ENVIRONMENT**

- Air Quality
- Civic Infrastructure

DETERMINANTS OF HEALTH



## EARLY SCHOOL LEAVERS - HEALTH



**22,970**  
RESIDENTS 25+ DO  
NOT HAVE A HIGH  
SCHOOL DIPLOMA  
(EARLY SCHOOL LEAVERS)

**1/3**  
LEAVE SCHOOL WITH  
A GRADE NINE EDUCATION  
OR LESS



**84%**  
NEVER GO BACK FOR  
FURTHER EDUCATION



**22%**  
REPORT BEING  
UNHAPPY



**74%**  
WOULD HAVE STAYED IN SCHOOL IF THEY COULD  
MAKE THE SAME DECISION AGAIN

**32%**  
REPORT BEING UNHEALTHY  
HEALTH OUTCOMES ARE WORSE



THE COST TO THE CANADIAN HEALTH CARE  
SYSTEM IS **\$211,471 PER PERSON** OVER  
A LIFETIME

**\$4.8 BILLION IN WATERLOO REGION**

**CREATIVITY  
IS THINKING  
UP NEW THINGS.  
INNOVATION  
IS DOING  
NEW THINGS.**

- Theodore Levitt




Waterloo Wellington LHIN



We need new thinking to solve old problems. The partnerships we make across the community will be instrumental in improving the health of residents.



**"This really is an innovative approach, but I'm afraid we can't consider it. It's never been done before."**



“It always seems  
**IMPOSSIBLE**  
until it’s done.”

Nelson Mandela