

CTE

Centre for
Teaching
Excellence

at the University of Waterloo

IN THE LOOP

newsletter

November 2018

Sharing news, views, and upcoming events on teaching and learning at Waterloo



CTE's Newest Instructional Developer

Kyle Scholz has accepted the role of [Instructional Developer, Research and Consulting](#), in the Centre for Teaching Excellence. He comes from his previous role in CTE as Liaison for the Faculty of Arts and Affiliated and Federated Institutions of Waterloo. Kyle will be supporting faculty and staff on the design and implementation of pedagogical research, chairing the annual University of Waterloo Teaching and Learning Conference, and administering the Learning Innovation and Teaching Enhancement (LITE) grant program.



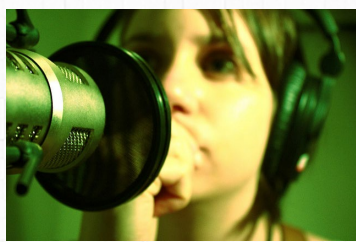
Introducing Linda McNenly

Linda McNenly has joined CTE for four months as a Research Associate supporting the work of the Complementary Teaching Assessment committee, as well as the GSPA Task Force on Graduate Supervision. She brings to CTE her research experience in academic, health, and nonprofit sectors.



Experiential Learning Institute

Following up on the [Experiential Learning Symposium](#), Waterloo ExL will host a two-day [Experiential Learning Institute](#) on Monday, February 25 and Monday, March 4, 2019. The Institute is designed to assist instructors and departments interested in adding an experiential learning component to their course. To apply, individual participants or team leads [can submit an Expression of Interest](#) for the Institute online. The Waterloo ExL team will contact you before Friday, December 21, 2018 to gather additional information on your project to assess its suitability for the Institute.



Undergraduate Communication Outcomes Initiative

The [Undergraduate Communication Outcomes Initiative](#) kicked into high gear this fall with new courses in Arts, Science, and Engineering added to existing courses in AHS, Math, and Environment. Through this initiative, undergraduates learn to communicate through text, speech, and other communication modes within the context of their disciplines. [Stephanie White](#), CTE's Writing Support Instructional Developer, has been consulting with instructors and program leads about the design of these courses and assignments. If you're teaching writing or communication in any course, contact Stephanie to learn about research-driven practices for designing communication assignments, giving feedback, using student peer review in your courses, and more.



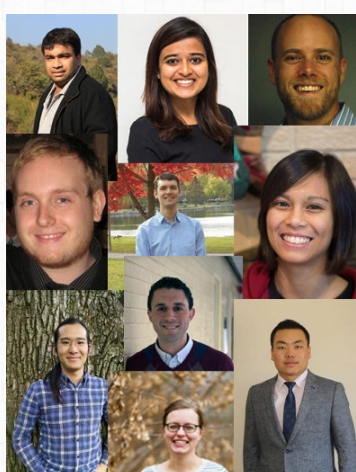
2019 Educational Technologies Week

CTE's fourth annual Educational Technologies Week will take place **March 18 to 23, 2019**. A key focus of the week will be Waterloo's new ePortfolio system: PebblePad. Instructors and staff members from all academic support units are welcome to deliver workshops on this or any other topic relating to learning technologies -- just contact [Mark Morton](#), Senior Instructional Developer, with your idea. Workshops can be 60 to 90 minutes in length.



Program Outcomes Learning Community Group

The November session of this Learning Community Group will focus on [implementing a collaborative process](#) for the development of program outcomes. Lori Case, Associate Dean (Co-operative Education), Faculty of Mathematics, and Jeremy Steffler, Faculty Relations Manager, Co-operative Education, will share the process that was used to develop faculty-wide outcomes for co-op programs in the Faculty of Mathematics. This session is part of the Program Outcomes Assessment Learning Community. Interested participants are asked to [register](#).



Did you know....

...that CTE has four [Graduate Instructional Developers](#) (GIDs) and six [Teaching Assistant Workshop Facilitators](#) (TAWFs)? These term-based positions are held by graduate students who provide instructional development to their peers. The TAWFs facilitate introductory workshops, while the GIDs conduct teaching observations and microteaching sessions, and facilitate advanced workshops.

Acknowledgments

Photo of the individual at the microphone courtesy of [Andréanne Germain](#) under a Creative Commons Attribution 2.0 Generic License.



CTE's Facebook page



CTE's Twitter



CTE's website

The Centre for Teaching Excellence acknowledges that we are located on the traditional territory of the Attawandaron (Neutral), Anishinaabeg and Haudenosaunee peoples. The University of Waterloo is situated on the Haldimand Tract, the land promised to the Six Nations that includes ten kilometers on each side of the Grand River.

Copyright © 2018 Centre for Teaching Excellence, All rights reserved.

Our mailing address is:

Centre for Teaching Excellence
University of Waterloo
Waterloo, ON, Canada
N2H 3A3

cte@uwaterloo.ca
cte.uwaterloo.ca

Want to change how you receive these emails?

You can [update your preferences](#) or [unsubscribe from this list](#).