

VISION 2015:
Building on Excellence
Graduate Student Town Hall

WATERLOO
ENGINEERING

engineering.uwaterloo.ca

March 12, 2012
Adel Sedra & Ray Legge

overview

- aspiration & key priorities
- planning process
- draft plan highlights
- graduate studies data
- graduate studies targets
- graduate studies objectives
- questions & feedback

aspiration

Waterloo Engineering aspires to be a **truly world-class school of engineering.**

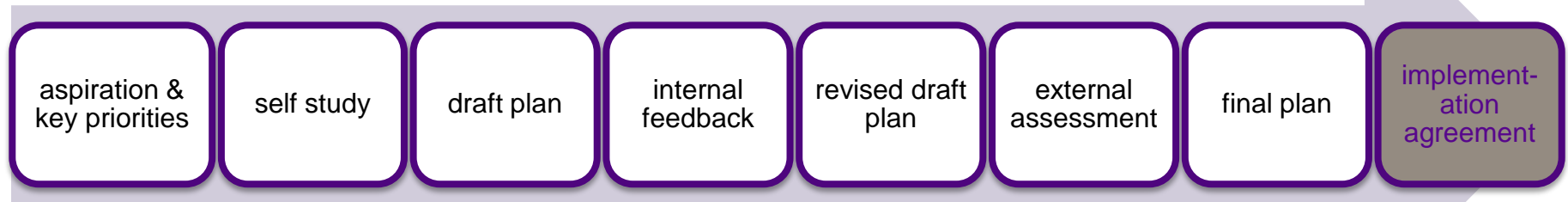
The programs we offer, the students we graduate, and the solutions we develop will be sought after by outstanding students, employers, employees and partners.

key priorities

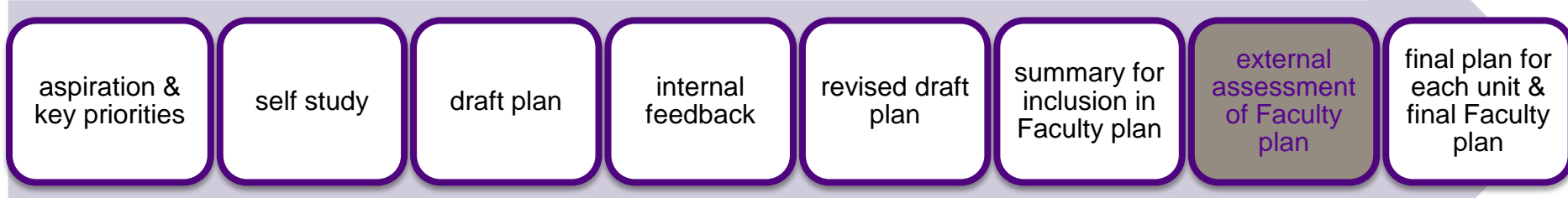
- Attracting, engaging and retaining outstanding **people**: undergraduate students, graduate students, faculty & staff
- Committing to excellence in academic **programs & services**
- Undertaking high-impact **research**, both within and across the disciplines and spanning the theoretical to the practical
- Building **connections** and promoting **collaboration**
- Fostering **innovation & entrepreneurship**
- Providing the world-class **facilities** required to support excellence in education & research

planning process

academic units



administrative units



draft plan highlights

◆ Faculty & Staff

Regular Faculty: +20% | FTE Staff: +25%

◆ Undergraduate Studies

Undergraduate intake: +3.5%

◆ Graduate Studies

Graduate student intake: +44%

draft plan highlights

- ◆ Research

Total funding: +33% | Funding/TTS: +10%

- ◆ Teaching

- ◆ Outreach & Diversity

- ◆ Internationalization

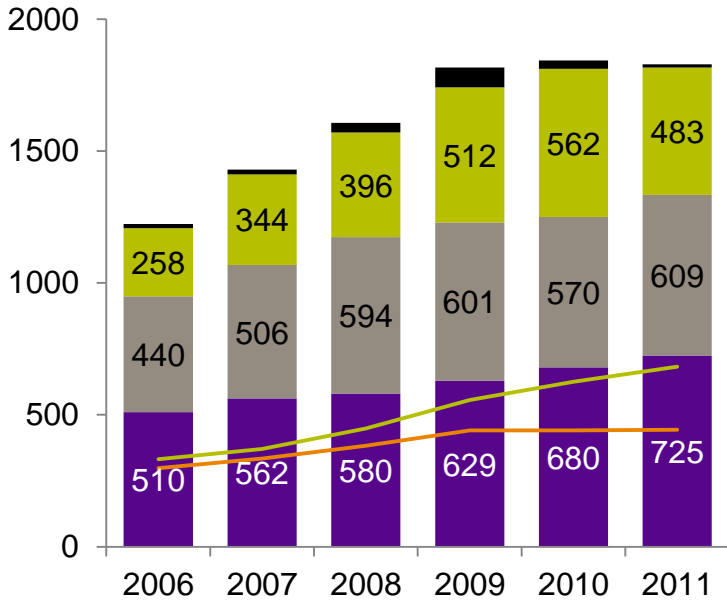
- ◆ Entrepreneurship

draft plan highlights

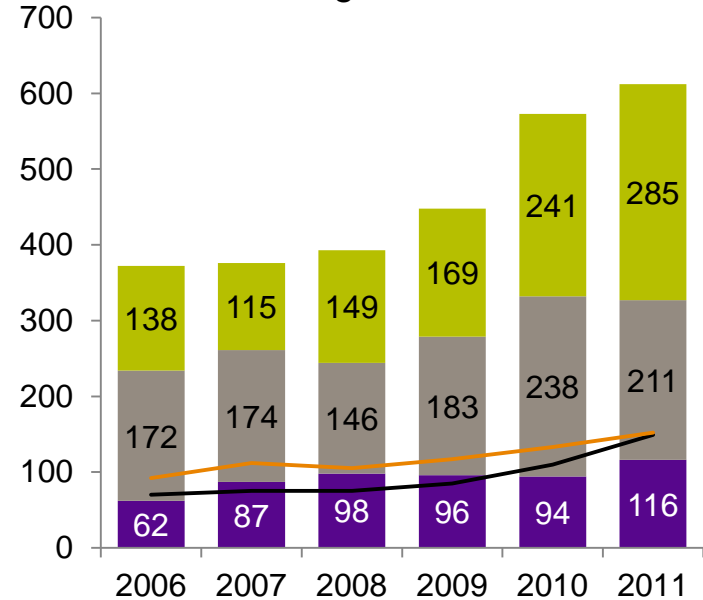
- ◆ Supporting the Plan
 - Faculty & Staff Positions
 - Budget
 - Space
 - Technology
 - Advancement

graduate studies data

Graduate Enrolment Over Time



Graduate Degrees Granted Over Time

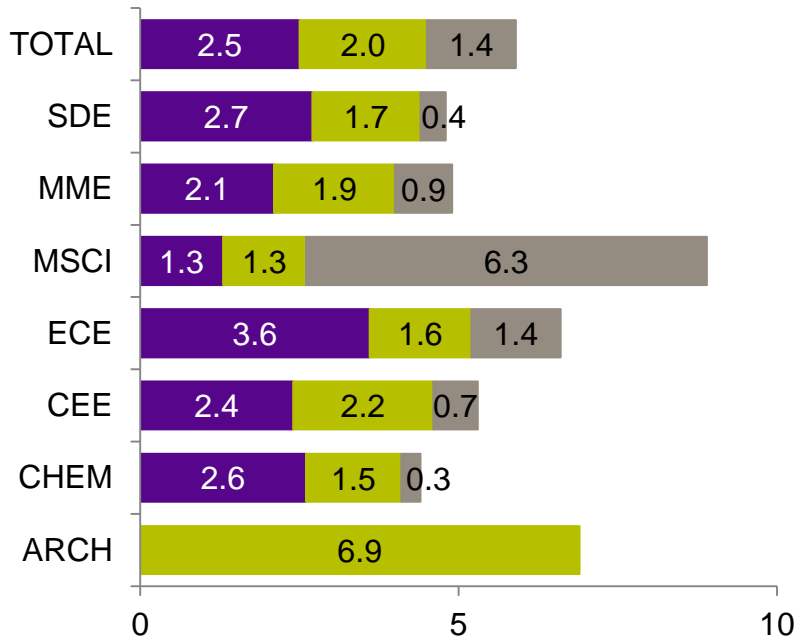


■ PhD
■ Professional Master
— Women
■ Research Master
■ Non-degree
— International

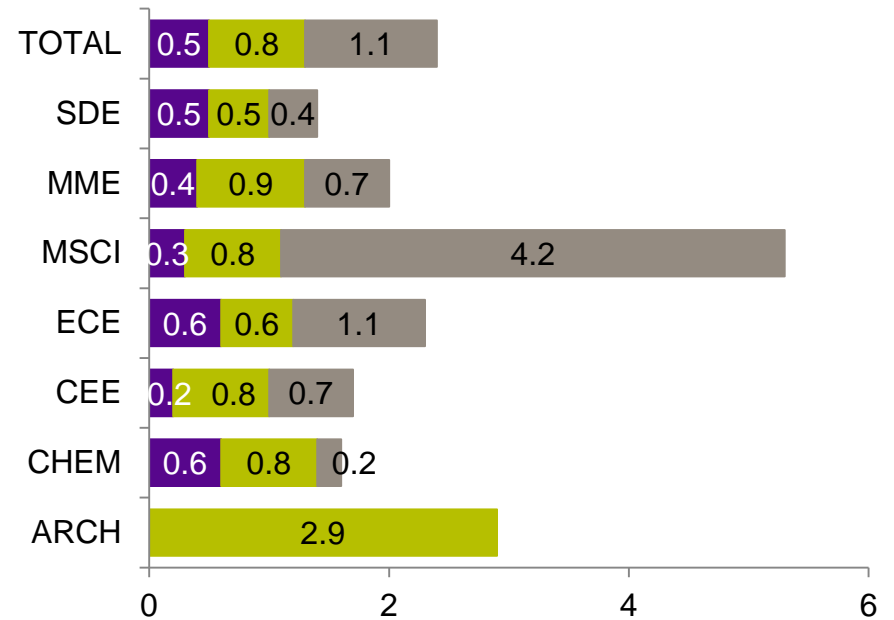
■ PhD
■ Professional Master
— Women
■ Research Master
— International

graduate studies data

Graduate Enrolment/TTS Faculty, 2011



Graduate Degrees Granted/TTS Faculty, 2011

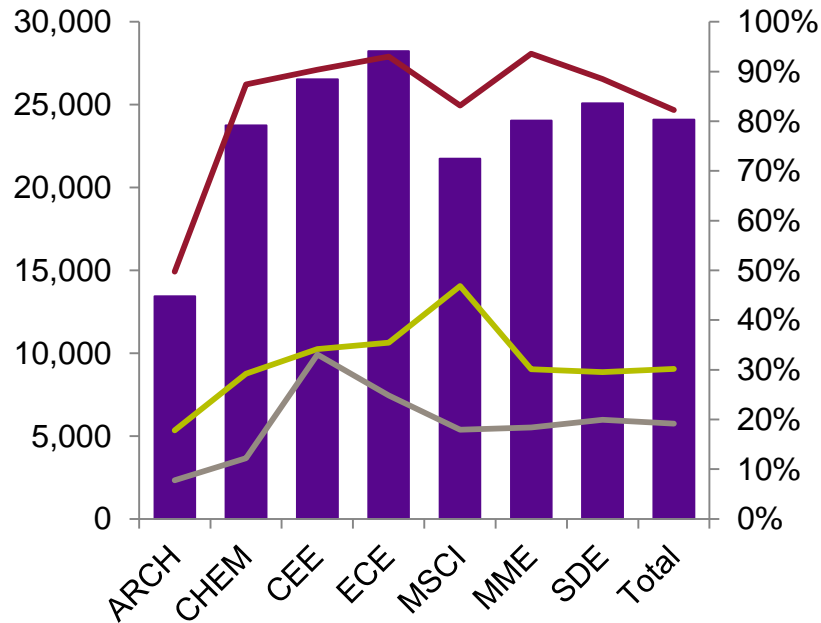


■ PhD ■ Research Master ■ Professional Master

■ PhD ■ Research Master ■ Professional Master

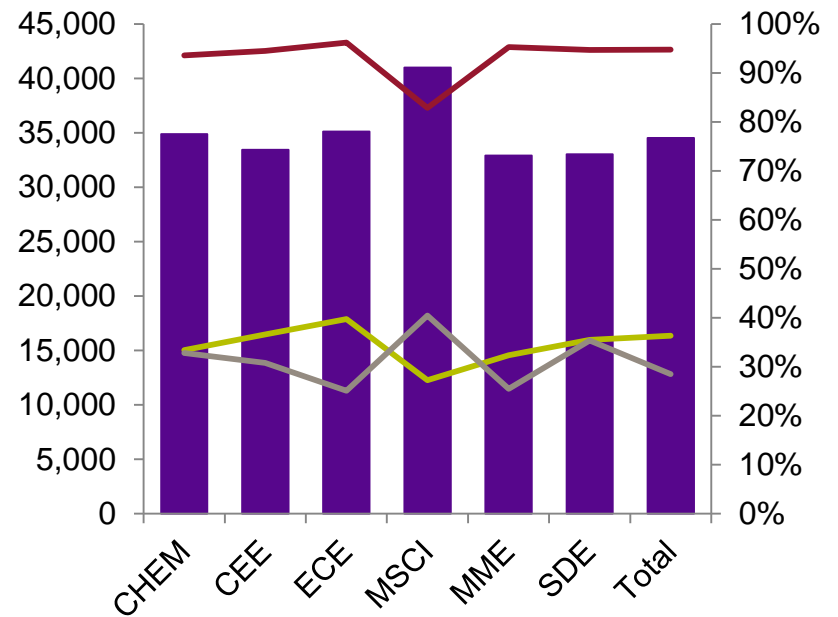
graduate studies data

Engineering Research Master's Student
Fiscal Support: 2010/11



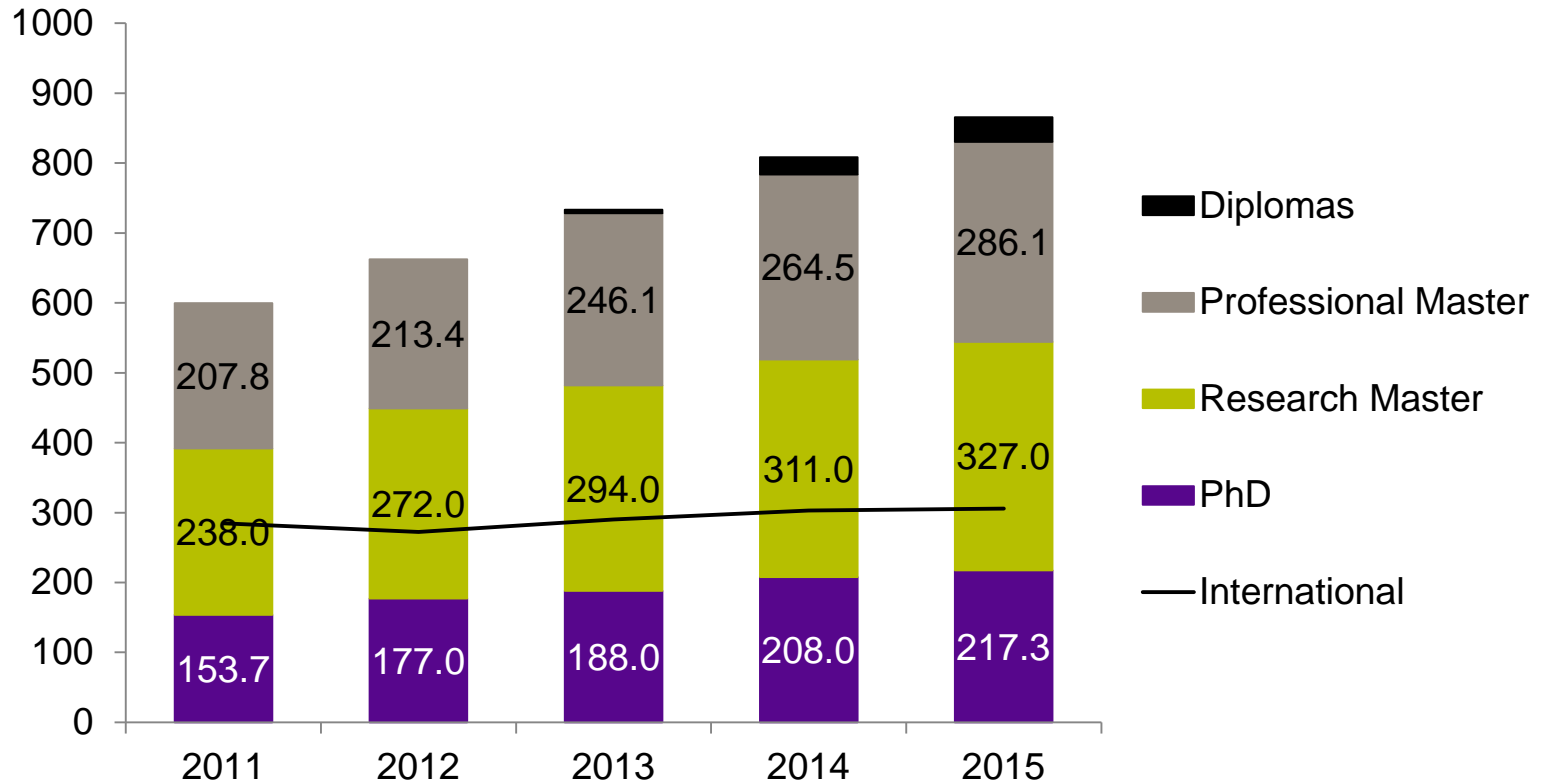
■ Avg \$ Supported FTE's — % of FTE's Supported
— % FTE's with TA — % FTE's with Ext Schlp

Engineering Doctoral Student
Fiscal Support: 2010/11



■ Avg \$ Supported FTE's — % of FTE's Supported
— % FTE's with TA — % FTE's with Ext Schlp

graduate studies intake projections



graduate studies objectives

Strategically Increase Graduate Enrolment

- ◆ Introduce new graduate programs in areas of strength
- ◆ Enhance the professional master's program
- ◆ Develop and implement a strategic recruitment plan for graduate studies

graduate studies objectives

Improve Graduate Operations and Service

- ◆ Provide excellent service to all clients
- ◆ Improve the quality and delivery of information
- ◆ Ensure timely processing of applications and admission correspondence

graduate studies objectives

Improve the Graduate Program

- ◆ Foster consistently high quality graduate student supervision
- ◆ Improve graduate course offerings
- ◆ Increase the academic rigour of graduate programs

graduate studies objectives

Enhance the Graduate Student Experience

- ◆ Evaluate current graduate student funding
- ◆ Attend to graduate student space needs
- ◆ Establish a graduate student society in engineering

Questions & Feedback

Volunteers Needed

We will be hosting focus groups to gather information to assist with developing grad recruitment strategies.

Interested?

Please contact your department admin staff.

We are confident that with the continued commitment and guidance of our senior leadership and the excellent work of all our students, faculty, staff, alumni and other community members, the Vision 2015 plan will help establish Waterloo Engineering as a truly world-class school of engineering.



THANK YOU

WATERLOO
ENGINEERING

engineering.uwaterloo.ca