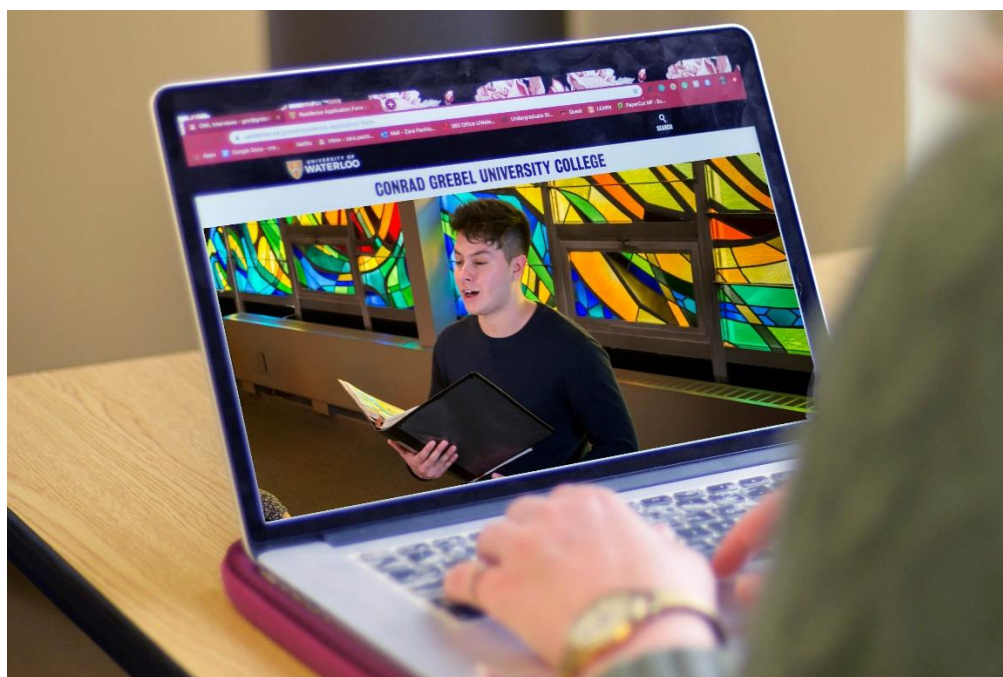


# HANDBOOK

FOR

Music Students



## 2020-2021

Department of Music  
Conrad Grebel University College  
University of Waterloo

UNIVERSITY OF  
**WATERLOO**



Conrad Grebel  
University College

Revised October 2020

## Welcome!

Welcome to University of Waterloo's Department of Music at Conrad Grebel University College. Whether you are taking only a few Music courses or completing a degree with a major or minor in Music, we hope that you will find your time here stimulating and enriching and the community of students, staff and faculty supportive and friendly.

This handbook contains important information about various aspects of the Music program. Please take time to read through it carefully. For more information about being a student at the University of Waterloo, consult the UW Undergraduate Calendar and the course offerings list available on the music website.

Conrad Grebel University College has been home to the University of Waterloo Music program since the 1960s and has offered BA degrees in Music since the 1970s, and over the years hundreds of students have graduated from Waterloo with degrees in Music. The Department of Music is large enough to create an interesting and vibrant community and yet small enough that each student can get to know staff and faculty personally.

As a department within the Faculty of Arts, the Music program espouses a strong liberal-arts orientation, exploring the role of music in human life. The traditional core areas of music history, theory, and performance are enriched by a global music dimension, with courses addressing questions at the vital intersection of disciplines. The University of Waterloo, with its tradition of collaboration and innovation, and Grebel, as a multi-disciplinary and interdisciplinary college, provide a richly supportive culture for this approach to the study of Music.

The Music Department includes a wide range of students from all faculties, providing vibrant interactions between students from diverse disciplines. Some students choose to major or minor in music, while others choose to take only a few music courses or participate in an ensemble. All ensembles are open to any student, staff, faculty, or community member, either as an extra-curricular activity or for credit, with each ensemble presenting a concert at the end of term.

Please let us know if you have questions. We are here to help. The Music Office is located in Grebel Room 1103, but is closed indefinitely. Please feel free to email faculty and staff. The general email is [music@uwaterloo.ca](mailto:music@uwaterloo.ca).

Our best wishes for the 2020-21 academic year!

## Table of Contents

FACULTY TEACHING AND RESEARCH INTERESTS .....	5
ARTIST-IN-RESIDENCE .....	7
MUSIC ENSEMBLES .....	8
Chamber Choir .....	8
University Choir.....	8
Chapel Choir:.....	8
Vocal Techniques .....	8
World Music Ensemble – Balinese Gamelan.....	9
Instrumental Chamber Ensembles.....	9
Orchestra@uwaterloo .....	9
Jazz Ensemble.....	9
CONCERTS & RECITALS.....	10
MUSIC STUDIO COURSES .....	11
Admission To Music Studio .....	11
Lessons .....	12
Evaluation.....	12
MUSIC 428: Graduation Recital.....	13
Practice Rooms.....	13
Lockers .....	13
REGISTERING FOR MUSIC STUDIO .....	14
AVAILABILITY OF STUDIO COURSES .....	14
SPECIAL TOPICS COURSES: Music 390 & Music 392 .....	15
DIRECTED STUDIES: Music 380 and 381.....	15
HONOURS RESEARCH SEMINAR: Music 491 .....	16
SENIOR HONOURS THESIS: Music 492 .....	16
MUSIC COURSES AT WILFRID LAURIER UNIVERSITY .....	16
FINANCIAL AID AND SCHOLARSHIPS.....	17
SERVICES AVAILABLE TO MUSIC STUDENTS.....	19
LIVING-LEARNING PROGRAM .....	19
STUDENT SUCCESS OFFICE.....	20
ASSOCIATE STUDENT STATUS .....	20
COURSE-OFFERING FREQUENCY .....	21
MUSIC OFFERINGS FOR 2018-19 .....	22
MUSIC DEGREE PLANS .....	23
Three-Year General Music .....	23
Four-Year General Music .....	23
Honours Music .....	24
Music Minor .....	27
Church Music and Worship Minor .....	27
MUSIC PLAN CHECKLISTS .....	27

## DEPARTMENTAL DIRECTORY

### **Full Time Faculty**

Laura J. Gray, Associate Professor,  
CGUC 1104, (519) 885-0220 Ext. 24247  
ljgray@uwaterloo.ca

Katherine Steiner, Assistant Professor, Director of Church Music and Worship  
Program, Library Liaison.  
CGUC 1106, (519) 885-0220 Ext. 24244  
ksteiner@uwaterloo.ca

Maisie Sum, Associate Professor, Gamelan Ensemble Director,  
Undergraduate Advisor  
CGUC 1102, (519) 885-0220 Ext 24219  
msum@uwaterloo.ca

Karen Sunabacka, Associate Professor, Noon Hour Concert Coordinator  
CGUC 1108, (519) 885-0220 Ext 24245  
Karen.sunabacka@uwaterloo.ca

Mark Vuorinen, Associate Professor, Department Chair, & Chamber Choir Director  
CGUC 1103a, (519) 885-0220 Ext 24220  
mvourinen@uwaterloo.ca

### **Music Office**

Claudia Van Decker, Undergraduate Academic & Administrative Coordinator:  
cvandeck@uwaterloo.ca CGUC 1103, (519) 885-0220 Ext. 24226  
Angelica Allen, Music Ensemble & Concert Coordinator  
a26allen@uwaterloo.ca  
CGUC 1103, (519) 885-0220 Ext. 24256

### **Part Time Instructors**

Ben Bolt-Martin, Instrumental Chamber Ensembles Director, cello  
Patricia Bonnie Brett, Introduction to Jazz  
John Brownell, Psychology of Music, music history  
Liska Jetchick, University Choir Director  
Stephanie Kramer, Vocal Techniques, voice  
Debra Lacoste, music history, trumpet  
Faith Levene, oboe  
Jane Maness, tuba  
Cameron McKittrick, Music & Technology  
Willem Moolenbeek, saxophone  
Lance Ouellette, violin  
Terry Paynter, music theory  
Kevin Ramessar, classical guitar  
Anna Ronai, piano  
Deborah Stroh, French horn  
Elaine Sweeney, clarinet

Laurel Swinden, flute

I Dewa Made Suparta, Artist in Residence, gamelan

Trevor Wagler, Fundamentals of Music Theory

Michael Wood, Jazz Ensemble Director, percussion

Simon Wood, Popular Music & Culture, Soundtracks: Music & Film

**Members of the K-W Symphony Orchestra are available for studio instruction**

## FACULTY TEACHING AND RESEARCH INTERESTS

**Laura J. Gray** received degrees in Music from Western, the University of British Columbia, and a Ph.D. in Music History from Yale University. Her main areas of research and publication include the music of the Finnish composer, Jean Sibelius, early 20th-century British music, the symphony, and early 20th-century music criticism and aesthetics. She has conducted research in Finland, England, and New York and presented scholarly papers nationally and internationally and has contributed to *The Sibelius Companion*, *Sibelius Forum*, *MusicWorks*, *Studies in Music from The University of Western Ontario*, *Notes*, and *The Conrad Grebel Review*. Most recently she presented papers on Sibelius at Stanford University and at the Sixth International Sibelius Congress in Hämeenlinna, Finland. Laura is currently working on a book on the so-called “Sibelius cult” in England in the 1930s. She teaches special interest courses on topics such as music and landscape, opera, and aesthetics, and has been the chair of Music since 2011.

**Katherine Kennedy Steiner** combines her interests in music, ritual practice, and communal identity in her research on medieval music. Her undergraduate degree at Wheaton College introduced her to the intricate beauty of early music. During her M.A.R. work at Yale Divinity School she learned about the ritual contexts in which most early music was performed. She went on to Princeton University to write a dissertation on music and liturgy in medieval St Andrews, offering new insight into an important collection of medieval polyphony. More broadly, Steiner researches the role of music in shaping communal identity through ritual practice and narrative history. Her published work includes an article on music for a Scottish saint in *Plainsong and Medieval Music*, and an edited volume of meditations on Scriptural songs, *Come, Let us Sing to the Lord*. She has held postdoctoral fellowships as a teaching scholar at Valparaiso University and as a Mellon Fellow at the Pontifical Institute for Mediaeval Studies. She has taught courses on Hildegard of Bingen, film music, Western music history, and liturgy. Her interest in contemporary worship led her to design a liturgy called *Speravi*, incorporating contemporary music into an ancient liturgy. She has also led early music vocal ensembles at Princeton University and the University of Notre Dame. At Grebel Katherine is the Director of the Church Music and Worship programme, and also the Director of the Chapel Choir.

**Maisie Sum** is an ethnomusicologist, educator, performer, and editorial board member of *MUSICultures*. Recipient of the 2014 Jaap Kunst Prize for an article published in *African Music: Journal of the International Library of African Music*, her research interests include the music traditions of Morocco and Indonesia, music associated with ritual, the impact of globalization on music traditions and identity, music, peace and conflict, musical rhythm and the brain, music and cognition, and music, health and wellbeing. As a member of *Gamelan Gita Asmara* (resident ensemble at The University of British Columbia) and *Gamelan Giri Kedaton* (resident ensemble at l'Université de Montréal), she has performed and studied Balinese music in Canada and Bali, Indonesia. At Conrad Grebel, Professor Sum is the general director of the UWaterloo Balinese Gamelan and teaches courses in music from a cross-cultural and interdisciplinary perspective. . She is also the Undergraduate Officer, responsible for helping students with academic advising.

**Karen Sunabacka** is a composer, cellist and music theorist. She graduated with a PhD in Music Theory and Composition from the University of California at Davis in 2008. She completed her MA in Music Composition from San Francisco State University (2003) and her BMus from the University of Manitoba (2000). She taught Theory and Composition and was the Music

Department Chair at Providence University College from 2007-2017.

In demand as a composer she sometimes finds it difficult to find a balance between teaching, composing and keeping up with the latest science fiction and fantasy book, film, or tv series. Some recent compositions include *English Horn Concerto in Memory of Beverly Clouston* for Orchestre Metropolitain (Montreal), *#DryColdConversations* for the Winnipeg Symphony Orchestra, *We all Sing* for Conrad Grebel University College, and *I Wasn't Meant for This* for Park Sounds (a Viola d'Amore and Percussion duo based in Montreal). Along with pieces about the natural beauty and winds of the Prairies, Karen has recently been exploring her Métis and Manitoba heritage through her mother's prose (Joyce Clouston). She's written pieces about her Métis Grandmother (Lenore Clouston), her aunt Beverly Clouston and her great-great Grandmother Mathilda.

**Mark Vuorinen (Associate Professor and Chair of Music)** holds a Doctor of Musical Arts degree from the University of Toronto and Master of Music degree from Yale University's School of Music and Institute of Sacred Music. A well-known Canadian conductor, Mark is the artistic director and conductor of Waterloo Region's Grand Philharmonic Choir, and the professional chamber choir The Elora Singers.

Prior to joining the Faculty of Conrad Grebel University College, Mark was an active church musician for fifteen years, most recently at the Church of the Redeemer (Anglican), Toronto and is past Music Director of the Toronto Chamber Choir. A recipient of many awards, is a Laureate of the Ontario Arts Council's Leslie Bell Prize. He was named the E. Stanley Sedar Scholar at Yale University's Institute of Sacred Music, was a recipient of the Elmer Iseler National Graduate Fellowship in Choral Conducting and received a 2016 National Choral Award from the Choral Canada (Association of Canadian Choral Communities) for his doctoral research on Estonian composer Arvo Pärt.

At Conrad Grebel University College, Mark is the Director of the UW Chamber Choir and teaches courses in conducting. His musical interests dovetail with Grebel's intersection of religious studies, peace studies, and music. Mark is a frequent guest conductor, choral adjudicator and clinician and is President of Choirs Ontario. He is the Department of Music Chair as of July 1, 2019.

## ARTIST-IN-RESIDENCE

**I Dewa Made Suparta** is Artist-in-Residence at Conrad Grebel University College, University of Waterloo. A performer, composer, and teacher of Balinese music, Dewa Suparta hails from a prominent musical family and is founding member of *Gamelan Çudamani*, an innovative ensemble renowned throughout Bali, Europe, and North America. He has composed, performed, and taught throughout Bali, has toured internationally, engaged in collaborations with international artists, and given workshops worldwide. Dewa Suparta held the position of Visiting Professor in the Faculty of Music at l'Université de Montréal from 2009 to 2013. Since 2009 he has been artistic director of Montreal's *Gamelan Giri Kedaton* and a regular guest artist of Ottawa's *Gamelan Semara Winangun*. As Grebel's Artist-in-Residence, he is artistic director of the UWaterloo Balinese Gamelan and has been instrumental in establishing the new Grebel Community Balinese Gamelan. Since his arrival, the Department of Music's offerings in global music and community outreach activities have expanded to include courses in Balinese music and culture, a second world music ensemble (*gamelan gender wayang*, also referred to as chamber gamelan), workshops, and more.

## MUSIC ENSEMBLES

The University of Waterloo Department of Music at Conrad Grebel University College invites students, faculty, staff and community members to join any of the eight musical ensembles that it sponsors and organizes. You can perform in any of the ensembles listed below for course credit or as an extra-curricular activity. Regular attendance at rehearsals is required, and attendance at dress rehearsals and performances is mandatory (if applicable). For more information about singing or playing in an ensemble, visit the Department of Music website ([www.uwaterloo.ca/music](http://www.uwaterloo.ca/music)), or e-mail us at [music@uwaterloo.ca](mailto:music@uwaterloo.ca). Sign-up for all Music Ensembles auditions are posted online at least two weeks before the start of each term, so please follow the links from our music website.

The following **music ensembles** are offered in 2020 to 2021:

**Chapel Choir; Choirs@UWaterloo (combination of Chamber & UW Choir), Gamelan Ensemble, Integrated Instrumental Ensemble (combination of ICE and Orchestra), and the Jazz Ensemble. See Ensemble Webpage**

**Chamber Choir:** Directed by Mark Vuorinen, the Chamber Choir meets every Tuesday and Thursday in the Conrad Grebel University College Chapel from 4:00-5:30 p.m. beginning the first week of classes each Fall and Winter term. Recent highlights include performances of Benjamin Britten's *Rejoice in the Lamb*, J.S. Bach's *St. John Passion*, the Canadian Premiere of *Considering Matthew Shepard*. The choir has worked with internationally renowned musicians Ēriks Ešņvalds and Sir James MacMillan and has given performances with the Grand Philharmonic Choir, Kitchener-Waterloo Symphony, the Cardinal Consort of Viols. The UWCC is an auditioned ensemble of the Department of Music at Conrad Grebel University College. Choristers are primarily undergraduate students representing all of the University of Waterloo's faculties.

**University Choir:** Directed by Liska Jetchick, the University Choir meets every Tuesday evening in Conrad Grebel University College Chapel from 7-10pm, during all three terms. This large, choral ensemble performs works across a broad range of styles from international folk music, cross-cultural musics, and Canadian music, with extensive forays into the classical works for large choirs. Choir membership requires a vocal interview with the director. Please check the music department website. Membership reopens each school term with choir membership varying between 70-90 singers.

**Chapel Choir:** Directed by Katharine Steiner, the Chapel Choir meets every Monday from 3:30-5:20p.m. and Wednesday from 3:30-5:30 p.m. in the Conrad Grebel University College Chapel beginning the first week of classes each fall and winter term. This group of about 20 singers participates in College chapel services (Wednesdays, 4:30-5:30 p.m.) and occasionally visits area churches or other venues.

**Vocal Techniques:** Taught by Stephanie Kramer, Vocal Techniques is structured in a lab format covering the foundations of singing – basic pedagogy, diction/phonetics, practice routines, and performance tips – designed to prepare students for more in-depth individual voice instruction. This course is also useful for pianists interested in vocal accompanying. The class begins the first week of term, and is held every Wednesday from 7-9 p.m. A vocal interview is required. This ensemble is offered during the fall term only.



**World Music Ensemble – Balinese Gamelan:** Directed by Prof. Maisie Sum and Grebel Artist-in-Residence, I Dewa Made Suparta, the ensemble meets on Tuesdays and Thursdays from 4:00 to 5:30PM. On the island of Bali, Indonesia the idea of community and the spirit of interaction are highly valued and extend to music-making. Being an aural/oral tradition, repertoire—from ritual pieces to modern compositions, instrumental or dance—it is learned and played without the use of music notation; that is, through listening, watching, imitation and repetition. Students experience this communal process of creating a unified sound on a gamelan semaradana (one of several types of gamelan found in Bali) consisting of gongs, metallophones, and drums. All interested students are encouraged to come to the first rehearsal. No audition is required; however, your intention to join is highly recommended (via email). Gamelan or percussion experience is not required. This ensemble runs each fall and winter term, with an additional intensive course in spring.

**Instrumental Chamber Ensembles:** Directed by Ben Bolt-Martin, Instrumental Chamber Ensembles meet at different times during the week, depending on the schedule of the members of your ensemble, beginning the first week of classes each fall, winter, and spring term. Instrumentalists interested in playing in small groups of approximately 3 - 8 players may join this group of ensembles. Musicians perform a wide variety of works from medieval times to the twentieth century. Although the majority of the groups feature stringed instruments, we also welcome wind instruments in these ensembles.

**Orchestra@uwaterloo:** Directed by Daniel Warren, this a large symphonic ensemble performs classical pieces. The orchestra rehearses on Thursday nights starting at 7:00 p.m. It starts with an open rehearsal every term, and then additional audition times are available following the open rehearsal. The orchestra meets each fall, winter, and spring term. Orchestra@uwaterloo is re-formed each term based on auditions. Undergraduate students form the majority of the orchestra's 60–70 musicians, though it also has faculty, staff, graduate students, and alumni. It presents an academic cross-section of the university, with the Math and Engineering Faculties particularly well-represented.

**Jazz Ensemble:** The Jazz Ensemble is a full ensemble employing saxophones, trombones, trumpets, piano, bass, drums and other percussion. Rehearsals are Monday evenings 7-10 pm with sectionals as needed. To audition, sign up on the bulletin board outside the Music Office (CGUC 1103). Directed by Michael Wood, this ensemble has a concert at the end of the fall and winter terms. Time is spent on learning to succeed in the “business” of music.

### **Music Ensemble Credit**

Each term of Music Ensemble is worth 0.25 units. Up to eight terms of Music Ensemble may be taken for credit, but only four 0.25-unit courses may be counted towards any degree in the Faculty of Arts. Music Ensemble requirements for all Music plans must be met above the specified number of Music courses required (see plan requirements starting on page 23).

If you wish to receive credit for Music Ensemble, you must register for it on Quest before the add period ends. The first term of Ensemble is Music 116 (with 117, 216, 217, 316, 317, 416 and 417 used for successive terms). Music Ensemble is normally taken above the usual 5-course full load, and each ensemble course is graded on a Credit/No Credit basis. Note: Admission to any ensemble offered through the University of Waterloo Music Department is based on audition and is at the discretion of the director.

## CONCERTS & RECITALS

**Attendance at recitals and concerts is a part of your music education and an expression of support for your fellow students. You are expected to attend concerts whenever possible, even when they are only offered online.**

The **Noon Hour Concert series**, sponsored by the University of Waterloo Department of Music at Conrad Grebel University College, presents performances by local and international musicians. These free concerts are presented in the fall and winter terms and feature classical, jazz, world music, and contemporary works. Noon Hour Concerts in Fall 2020 and Winter 2021 will take place online. These are posted the web site at <https://uwaterloo.ca/music/events>.

**Student recitals** are scheduled for the end of each term. Students in Music 326, 327, 426, 427 and 428 are required to perform in recitals. Students in Music 226 and 227 are encouraged to perform. Due to the Covid 19 pandemic, recitals will not happen in the usual manner. Please see recital page for updates.

→ Fall student recital dates: tba

Winter student recital dates: tba

**Graduation recitals** are given by all students registered for Music 428.

**Ensemble Concerts** will not take place in Fall 2020 and Winter 2021, due to the Covid 19 situation.

## MUSIC STUDIO COURSES

Music Studio courses offer individual instruction in voice, piano, organ, all orchestral instruments, saxophone, and guitar. The Music Studio courses are MUSIC 226, 227, 326, 327, 426, 427 and 428. Students who are applying to take Music Studio for the first time should read “Admission to Music Studio” carefully. Students who have already taken their first term of Music Studio should skip down to the section “Registering for Music Studio”.

**Due to the Covid-19 pandemic, studio lessons will be offered remotely until further notice. Health and safety are our priority. See [Studio webpage](#) for details.**

---

### Admission To Music Studio

Admission to Music Studio is by audition. The purpose of the auditions is to ensure that students have already attained a degree of accomplishment (typically Grade 8 Royal Conservatory or its equivalent) and show sufficient promise to merit this kind of instruction for credit. When there are more qualified students auditioning than there are places available, the faculty will select the most suitable candidates on a competitive basis.

### Arranging your Audition

Students who wish to take Music Studio should contact the Music Department Administrative Assistant by phone (519-885-0220 extension 24226) or email ([music@uwaterloo.ca](mailto:music@uwaterloo.ca)) to arrange for an audition well before the audition dates. Auditions for Fall term are typically held during Orientation Week in September. For Winter and Spring terms, auditions are held in the first day of classes in January and May, respectively. See the Music website for exact audition dates: <http://www.uwaterloo.ca/music/auditions>. Auditioning students should bring a completed “Prospective Music Student Information Form” (available on the Music Office bulletin board and in pdf format on the website) with them to the audition.

### Audition Requirements

Students should prepare two contrasting pieces (or movements of longer works) by different composers to perform at the audition. Voice and piano students are encouraged (but not required) to perform their selected works from memory. The audition will include sight-reading and a brief interview by two faculty members. An accompanist will be provided for singers and instrumentalists free of charge. At least one piece must be accompanied, with the following exceptions: piano, guitar, organ. Please bring two copies of the music you will perform: one for the faculty hearing the audition and one copy of the accompaniment part (if applicable). Auditions are 15 minutes in length.

### Audition Procedure

Plan to arrive at least one half hour prior to your scheduled audition time. Upon arrival, first go to the Music Office (Room 1104 at Conrad Grebel University College) where the Music Department Administrative Assistant can verify that you have the necessary paperwork. You will then be directed to a practice room in order to warm-up. Plan to arrive at your actual audition room 10 minutes early. Bring the required audition materials (the Prospective Music Student Information form and copies of your music) and your personal belongings with you to the audition.

## **Audition Results**

Audition results will be emailed by the Music Office after all the auditions have been heard and the Music faculty has had an opportunity to confer (within 24 hours of the last audition).

## **Accompanists**

Accompanist for auditions is provided free of charge. All Music Studio students (except pianists) are entitled to one hour per term with an accompanist in order to prepare for recitals and juries. A sign-up list of available times with the accompanist will be posted outside the Music Office well in advance of these events. Times are scheduled in 30-minute blocks.

## **Lessons**

Each term consists of nine hours of individual instruction, typically given as twelve weekly 45-minute lessons. Occasionally, an instructor may structure the nine hours of instruction in fewer, longer lessons. The instructor is not obligated to reschedule if a student misses lesson.

## **Proficiency Level required**

All Music majors are required to perform at least a Grade 10 RCM level by the time they have completed MUSIC 327.

## **Evaluation**

Music Studio students are evaluated based on their work and attendance at lessons, their jury performance (the jury is a performance-based "final exam" at the end of the term), and their attendance at Masterclass and student recitals. Your final Music Studio mark will be determined as follows:

Instructor's mark	66.7%
Jury mark (average of the 2 jurors' marks)	33.3%

Failure to attend Masterclasses and at least two student recitals will reduce your final grade by up to 10%. A final mark of at least 65% must be obtained in order to proceed to the next term of Music Studio, except in the case of MUSIC 426 when the student is proceeding to MUSIC 428, where a mark of at least 85% is required from both the instructor and the jurors' average (Note: if taken Music 246 is taken before Winter 2020, then

## **Recitals**

Music Studio students typically perform in a student recital for their peers and the greater public at the end of each term. Participation in a student recital is encouraged, but not required for students in MUSIC 226 and 227 (consult your instructor). Student recital participation is required for MUSIC 326, 327, 426, 427 and 428. Student recitals are scheduled for Monday, Tuesday, Wednesday, or Thursday at 12:30 p.m. near the end of term. Recitals take place in the CGUC Chapel and normally last no more than 50 minutes. Students are expected to attend the entire recital in which they perform. Students will be assigned a recital date based on their class schedule and will receive a recital permit which needs to be completed in consultation with their studio instructor and returned no later than two weeks prior to the recital date.

## **Juries**

The "jury" is the final exam for Music Studio. Juries are held on the weekday after the last day of classes each term. The jury schedule is posted on the bulletin board outside the Music Office at least two weeks prior to the scheduled jury date. The requirements for juries are as follows:

- Be prepared to perform two pieces (or movements from larger works) in contrasting styles and by different composers.
- Studies may not be used as jury pieces
- Vocalists and pianists are required to perform from memory. Other instrumentalists may use music at their jury.
- Do not play repeats for your jury performance.
- Bring two copies of your music for the jurors' use.
- Bring a typed list of all repertoires you studied during the term, signed by your instructor.
- Arrive at least 10 minutes before your assigned time.
- Have your instrument tuned and ready to play before you enter the jury room.
- Leave coats and backpacks outside the jury room.
- You will receive a Teacher Evaluation form to fill out after your jury; please complete it and return it to the Music Office immediately following your jury.
- Jury results will be available in the Music Office only after final marks for the course have been posted. Your Teacher Evaluation must be returned before viewing jury results.

### Masterclass

'Masterclass' refers to group performance classes. In addition to individualized instruction, all Music Studio students are required to attend scheduled masterclasses. For example, a group of instrumental students might meet with a studio instructor for two hours one day to perform for each other, receive constructive critique, and learn new techniques.

### MUSIC 428: Graduation Recital

Honours and Joint Honours Music students may wish to perform a graduation recital as part of their degree. This is done by taking MUSIC 428. Admission to MUSIC 428 is determined by the marks received in MUSIC 426. You must receive a mark of at least 85% in MUSIC 426 from *both* your instructor *and* the average of the two jurors' marks. Students wishing to enroll in MUSIC 428 should indicate their intention at the time of their 426 jury. A proposed recital program should be submitted to the Music Department for approval by the second week of the term. A form for this purpose can be obtained from the Music Office when you enroll in Studio, along with a sheet on further information and tips. The recital should consist of 20-30 minutes of music, and a variety of style periods should be represented. A minimum of 1/3 of the recital program should be music not performed by the student at a previous jury. All music, with the exception of chamber music, must be memorized by pianists and vocalists. Orchestral instrumentalists need memorize concertos only. The MUSIC 428 recital is evaluated by Music faculty in lieu of a jury. Your final Music Studio mark will be determined as follows:

Instructor's mark	50%
Jury mark (average of the 2 jurors' marks)	50%

### Practice Rooms

Practice space and pianos are provided at Conrad Grebel University College as facilities allow. Priority for practice room space is given to current Music Studio students, followed by Music majors and CGUC student residents. **Currently the practice rooms are not available to students living outside of Grebel.**

**Lockers:** Instrument storage lockers are not currently available.

## REGISTERING FOR MUSIC STUDIO

### Ensemble Participation Requirement

All students who enroll in Music Studio must participate in an ensemble for credit during that term. There is a separate audition to be admitted into an ensemble. See the Music Office bulletin board and the website for more information.

### Studio Fee

In addition to tuition, there is a fee to take Music Studio. This fee covers the higher cost of providing one-on-one instruction to students as well as the use of a piano accompanist and masterclass instruction. The fee for Spring 2020 to Winter 2021 is **\$312.00**.

### Enrollment Procedure

1. Students who have been accepted by audition into Music Studio must register online for a Music Ensemble (MUSIC 116, 117, 216, 217, 316, 317, 416, or 417), which is the co-requisite for Music Studio. You must be registered for a Music Ensemble when taking Music Studio unless you have an exemption from the Undergraduate Officer, Dr. Maisie Sum..
2. Send a copy of your timetable (in grid format off Quest) to Claudia Van Decker, the Undergraduate Academic & Administrative Coordinator. This will be used to schedule you for lessons, masterclasses, and student recitals.
3. Pay the Music Studio fee (online banking or credit card). Instructions will be emailed.
4. You will receive a permission number which will allow you to register online for Studio, and lesson times will be arranged..

## AVAILABILITY OF STUDIO COURSES

The following limits apply to the number of Music Studio courses students may take:

- *Honours-Music, Music and Business*  
Six terms: MUSIC 226, 227, 326, 327, 426, and 427 or 428
- *Music Four-Year General*  
Five terms: MUSIC 226, 227, 326, 327, and 426
- *Music Three-Year General*  
Four terms: MUSIC 226, 227, 326, and 327
- *Music Minor*  
Three terms: MUSIC 226, 227, and 326\*
- *Music Studio as an elective*  
Two terms: MUSIC 226 and 227

\*MUSIC 326 is available to Music Minors only after the Minor has been declared and MUSIC 270 has been completed.

\*\*If a student changes his or her academic plan to one whose Music Studio course limit is lower than the number of courses already taken, only the lower number of courses may be counted toward the Music requirements for the degree (e.g., Honours to 4-year General).

**Studio Instructors** See "Faculty and Staff" on the music website for a list of studio instructors.

## SPECIAL TOPICS COURSES: Music 390 & Music 392

The Music Department offers annual special topics seminar courses to enrich the course offerings available to students.

*Note: These are repeatable courses, subject to different content; they may be completed a total of three times. This applies to 390 and 392.*

Fall 2020: Music 390

**Music, Health, & Healing:** From everyday listening to clinical music therapy, music is good for your health. What role does it play in health? Delve in to the latest discoveries and applications, engage in conversations with guest speakers, and explore pathways for music and public health. For more information, contact Dr. Maisie Sum.

## MUSIC & CULTURE TRAVEL COURSES

Experience the rich musical culture of other countries and get credit at the same time. Previous trips include to South Africa, London, Leipzig, Berlin, and Estonia. Course number is **Music 355**. See [Travel Course webpage](#).

## DIRECTED STUDIES: Music 380 and 381

Upper-year Music majors and minors are eligible to propose a course of directed studies (Music 380 or 381), which entails individual study of a specialized topic under the guidance of a full-time member of the music faculty.

The purpose of the directed studies course is to permit students to pursue a topic of the student's own choosing. Students might be interested in pursuing further studies beyond an existing course they have taken (e.g. composition, piano literature, medieval music, women in music, psychology of music, etc.). Alternatively, the student might wish to propose studies in areas not served by the existing music curriculum (e.g. arranging, analysis, biography, etc). A Directed Studies course may involve a regime of reading, listening, score analysis, or a project of the student's devising. A major goal of the Directed Studies courses is to encourage students to read scholarly writings on music and to increase their familiarity with musical repertoire.

Since supervision is at the discretion of the faculty member, the student needs to show sufficient initiative, independence, and resourcefulness to attract the voluntary participation of a faculty member.

Students are encouraged to speak to the Undergraduate Officer and submit a directed-studies proposal before the term in which they would like to take the course.

Admission to Music 380 and Music 381 requires Music Department consent.

**HONOURS RESEARCH SEMINAR: Music 491  
and  
SENIOR HONOURS THESIS: Music 492**

Music 491 and 492 are open to Music majors (level at least 3A) through Department consent.

Music 491: Honours Research Seminar (0.5 units) is designed to give students an opportunity to develop and hone research and writing techniques through individual research projects and regular meetings with other students and faculty.

Music 492: Senior Honours Thesis (0.5 units): Students may wish to write a Senior Honours Thesis over two terms rather than a term paper. This can be done by taking Music 491 followed by 492 in a subsequent term. Students are encouraged, however, to identify their intention of writing a before embarking on Music 491, so that a suitable faculty advisor can be found and so that the project's scope and topic can be adapted accordingly.

The length of the thesis should be between 5000 and 7500 words. The final copy should be typed, double spaced, and include footnotes or endnotes and bibliography. The grade for Music 492 is based on the final essay submission and is assigned by the faculty advisor and a second reader.

The student is expected to demonstrate at the end of Music 492:

1. Sufficient familiarity with some of the basic and most essential literature on the subject (primary and secondary sources)
2. Clarity on the main issues and the related issues to the subject
3. The ability to make a reasonably learned exposition of the question(s) under discussion
4. Some comprehensiveness, inclusion of knowledge from various fields of music, and awareness of their methodologies.

\*\*\*Music 491 and 492 are recommended for all Honours Music students intending to pursue graduate studies.

**MUSIC COURSES AT WILFRID LAURIER UNIVERSITY**

Music Majors and Minors may take Music courses at WLU under the following circumstances:

- an equivalent course is not offered at UW, or an unavoidable scheduling conflict exists.

**Cross-Registration Form/Letter of Permission Form**

To register for a WLU course students must complete and submit a Cross-Registration Form (found on the Registrar's Web page at <http://registrar.uwaterloo.ca/forms/>).

**Restrictions**

Certain restrictions apply to courses in the area of Performance and Music Education:

Courses in Performance (such as the summer Intensive in Voice, Diction for Singers, Acting for Singers) may be taken in lieu of, but not in addition to, the maximum number of Music Studio courses allowed in your particular programme. (See "Availability of Music Studio Courses" above.)



## FINANCIAL AID AND SCHOLARSHIPS

### **Financial Aid**

A number of bursaries are available for Music majors who demonstrate financial need. Application forms for aid can be obtained from the Music Administrative Assistant or at <https://uwaterloo.ca/grebel/financial-aid-and-awards/need-based-bursaries>. Applications for financial aid are dealt with in the order received; students may apply at any time. Financial forms should be returned to the Chair of the Scholarships and Bursaries Committee (Paul Penner) at Conrad Grebel University College.

Bursary recipients are required to take at least two music courses per term during the period for which the bursary is awarded.

### **Scholarships**

For more detailed information, see [Awards](#) section of website.

### **Jean Caya Music Awards & Rudolf and Hedwig Rempel Music Awards**

The Music Department offers several new awards of approximately \$2000 each year. Awards are renewable for a total of four years, provided that the recipient maintains good standing in an Honours Music, Joint Honours Music or Music and Business degree plan.

Awards are offered to students entering their first or second year who are either intending to major in Music (if entering first year) or who have declared Music as their major (if entering second year). Recipients must be enrolled in at least two music courses per term during each academic year for which the award has been made. Additionally, students need to hold a current Grebel residence contract or associate with the college (see associate information below) to receive the Rempel award.

Students entering first year: The award is based on an audition for Music Studio, an interview, and the secondary school transcript. Contact the Music Department Office (to arrange an audition and to indicate your interest in the award).

Phone: (519) 885-0220 ext. 24226

Email: [music@uwaterloo.ca](mailto:music@uwaterloo.ca)

Continuation of Award for Students entering second year and above: The award requires students to declare Music as their major (or as one of their majors if pursuing a double-major program), and it is based on academic performance during first year, Music Studio marks (or performance on the Music Studio audition, if Studio has not yet been taken), and assessment by the Music faculty. Contact the Music Undergraduate Officer to indicate your interest in the award.

Dr. Maisie Sum, Music Undergraduate Officer

Phone: (519) 885-0220 ext. 24219 Email: [Music.advisor@uwaterloo.ca](mailto:Music.advisor@uwaterloo.ca)

### **Clemens Scholarships in Music**

Several awards are given annually to upper year Music majors. Awards are based on the following criteria: academic excellence, achievement in performance, and overall contribution to the Music program. Recipients must be enrolled in at least two music courses per term during the academic year for which the award has been made. No application is necessary.

**Agnes Giesbrecht Choral Music Scholarship**

This award of approximately \$1000 supports and promotes choral music and training among students enrolled in the Music program. The recipient will be a member of the Chapel Choir and serve as assistant to the Chapel Choir Director during the academic year for which the award is given. The award is based on the student's academic record, active involvement in the Music program, vocal ability, and interest in choral music, including the Russian Mennonite choral music tradition.

**Ford-Harrison Church Music Award**

The award is available to students enrolled in one of the Church Music and Worship academic plans to offset expenses related to tuition fees or enrichment activities in the area of church music and worship. Application is by letter to the Director of the Church Music and Worship program.

**Judy Dyck Volunteer Award**

This Award is to support students who are involved in the Music Department who demonstrate a spirit of volunteerism for the Music programs at the College.

Recipients will be chosen giving preference to the following criteria:

1. Students enrolled as Music Majors or Minors and,
2. Students who are in upper years and
3. Students who demonstrate active engagement with activities in the Music program such as:
  - a. Volunteering to help at concerts, recitals, auditions, Musical productions etc.
  - b. Exhibiting leadership in Music Society or other student activities
  - c. Participating in Music Live/Learn program.

**Music and Culture Travel Award**

Wilbur Maust was a member of the Music faculty at Conrad Grebel University College from 1977 to 1996. During his tenure, he led music and culture tours to Vienna and donated funds to make this experience possible for students. One award of up to \$750 is given annually to support a Music student who wishes to participate in a University of Waterloo Department of Music "Music and Culture" travel course. The recipient will be nominated by the Music Department and chosen by the College Scholarships and Bursaries Committee, giving preference to the following criteria:

1. Students who are enrolled in a Music and Culture course (Music 355) for credit.
2. Students with financial need will be given priority, all else being equal.
3. Students who have demonstrated involvement in the Music program (eg. Music majors and minors).

**Faculty of Arts Upper Year Scholarship**

At the discretion of the department, this scholarship is awarded to music majors with a minimum overall average of 83%. Recipients must have taken at least 10 term courses at University of Waterloo.

Scholarship Link

## SERVICES AVAILABLE TO MUSIC STUDENTS

The [Milton Good Library](#) is located on the third floor and is a great place to study. You can find Music Course Reserves, music scores, and other resources for projects and papers. The Milton Good Library has two group study rooms available by reservation. Library hours are:

Monday to Friday 10:00am - 4:00pm;

Closed Saturdays, Sundays and Statutory Holidays

Closed Christmas holidays from December 24, 2020--January 4, 2021.

## LIVING-LEARNING PROGRAM

As a first year Music Student either living in the Grebel Residence or as a Grebel Associate, you may apply to be part of the [Living-Learning program](#) with other music students. A limited number of spaces are available.

Why be part of a Living-Learning program? Experience the best of both worlds: be part of a diverse residence community of 142 students from all faculties and programs, while enjoying the benefits of growing with a small group of Music students and faculty. You will participate in academic events, benefit from the experience of peer leaders as you plan your goals, and make a difference as you share what you are learning with the wider Grebel community. In Grebel's Music Living-Learning program, you will:

- Live with other students who are interested in Music. (or participate as a non-resident)
- Get to know Music faculty and staff outside class.
- Learn from the experiences of upper year Music students. Find out about courses, activities, and opportunities.
- Participate in discussions about music, culture, theory, and more.
- Be part of various musical productions, programs, and activities.

## SOCIAL MEDIA

**Facebook:** Uwaterloo Music Department

**Twitter** @UWMusicDept

**Grebel Music Events Page:** <https://uwaterloo.ca/music/events>

**Instagram:** uwmusicdept

## MUSIC SOCIETY

The UW Music Society, also known as MuSoc, aims to further a sense of community within the Music Department and promote all aspects of music around the University of Waterloo. MuSoc hosts a variety of events every term which allow music students to get to know each other and have a little fun! The society also schedules educational seminars and occasional performance opportunities. Look for posters around the music department and like our page on Facebook to stay up to date with everything that's going on! If you are a music student and think you might like to get involved with the Music Society, please send us an email at [uwmusoc@gmail.com](mailto:uwmusoc@gmail.com).

For more information and upcoming events, find us on Facebook and Twitter: [@uwmusoc](#)

*MuSoc is a sub-society of the Arts Student Union (ASU)*

## ASSOCIATE STUDENT STATUS

We encourage you to consider getting the most out of your Grebel experience by becoming an [Off-Campus Associate](#).

Off Campus Associates are student in first to fifth year who do not live at Grebel but are connected to the supportive, fun, and engaging Grebel residence community! With Grebel as a home base on campus, Associates find it easier to meet friends, join teams, and get involved during their undergraduate experience.

The Grebel Associate Student program is very popular with 90 plus students joining each term!

## STUDENT SUCCESS OFFICE

The [Student Success Office](#) services are available to all University of Waterloo Students. It offers Learning resources, connections to tutors, Peer Success Coaching, and Writing and Communication help. Here is a short list of resources:

- Manage your time in University  
Learning Online
- Improve Note-taking & Reading Skills  
Life Skills for University
- How to Succeed in University Assignments
- How to Succeed on Tests and Assignments

See <https://uwaterloo.ca/student-success/resources> for more info.

## CAMPUS WELLNESS

**Counselling Services and individual appointments are available at no charge to registered University of Waterloo students in classes or on co-op terms.**

**COVID-19 Update:** Counselling Services is currently providing services by phone and video between Monday to Friday 8:30 a.m. & 4:30 p.m. To book an appointment please call 519-888-4567 ext. 32655.

### [Campus Wellness Counselling Services](#)

If you can't make it to a session in person, you can view a collection of our workshops and seminars online at any time.

[The Health Services COVID-19 Testing Assessment Centre](#) is open and testing by appointment only. Testing is available to University students, employees and postdocs only at this time.

Testing Assessment Centre

**Wellness Check Note:** If you are concerned about a fellow student, you can contact Counselling services and they can reach out anonymously to a student on behalf of another student, advisor, instructor, staff, etc) [Wellness Check](#)

[Empower Me](#) is a confidential mental health and wellness service that connects students with qualified counsellors 24/7. They can be reached at **1-833-628-5589**.

## COURSE-OFFERING FREQUENCY

In planning your schedule of study, please take note of which courses are normally available every year and those offered less frequently.

### **Music Theory Courses: all four offered every year:**

- Music 270: Music Theory I (Spring, Fall, Winter)
- Music 271: Music Theory II (Winter)
- Music 370: Music Theory III (Fall)
- Music 371: Music Theory IV (Winter)

### **Music History Courses: three of the four are offered every year:**

- Music 253: Cathedral and Court: Music to 1600 (Fall 2020)
- Music 254: Monteverdi to Mozart: Music from 1600-1800 (Winter 2021)
- Music 255: The Romantic Century: Beethoven and Beyond (Fall 2020)
- Music 256: Music Since 1900 (Winter 2021)

### **Courses offered in 2-year or 3-year rotation (see website):**

- Music 231: Music Cognition
- Music 260: The Symphony
- Music 261: Opera (Fall 2020)
- Music 262: Music for Vocal Ensemble
- Music 332: Aesthetics of Music
- Music 333: Music and Landscape
- Music 334: Women, Music and Gender
- Music 335: Perspectives in Music & Peace (Fall 2020))
- Music 355: Music & Culture Travel Course (tba)
- Music 361: The Art Song
- Music 362: Piano Literature
- Music 363: Christian Hymnody
- Music 364: Worship and Music (Winter 2021)
- Music 376: Composition Seminar

### MUSIC OFFERINGS FOR 2019-20

<b>Fall 2020*</b>	<b>Winter 2021*</b>	<b>Spring 2021</b>
Music Studio (all) Chapel Choir Choirs@UWaterloo Integrated Instrumental Ensemble Jazz Ensemble Gamelan Ensemble Music 100 Music 110 Music 111 Music 140 Music 222 Music 232 Music 246 Music 253 Music 255 Music 261 Music 270 Music 275 Music 335 Music 370 Music 380/381 Music 390 Music 492  CMW 201/202	Music Studio (all) Chapel Choir Choirs@UWaterloo Integrated Instrumental Ensemble Jazz Ensemble Gamelan Ensemble Music 100 Music 110 Music 140 Music 240 Music 246 Music 254 Music 256 Music 270 Music 271 Music 364 Music 371 Music 380/381 Music 492  CMW 201/202 CMW 363 (with Music 363)	Music Studio (all) University Choir Chamber Ensembles Orchestra Music 100 Music 140 Music 270 Music 380/381 Music 491/492

\*Due to Covid-19 precautions, the full range of Ensembles will not be offered in Fall 2020 or Winter 2021. See the Ensemble webpage for full details.

## MUSIC DEGREE PLANS (from the 2020-21 calendar)

### Three-Year General Music

Continuation in this academic plan requires a cumulative minimum overall average of 60% and a cumulative minimum Music major average of 65%.

Eligibility for graduation in the Three-Year General Music academic plan includes successful completion of the following requirements:

1. Appropriate Program-level requirements. See [Bachelor of Arts Degree Requirements](#).
2. Music Plan-level requirements:
  - a minimum Music **major average** of 65%
  - at least six academic course units (12 courses) in Music, including:
    - **MUSIC 110, MUSIC 270, MUSIC 271**
    - one of **MUSIC 232, MUSIC 233**
    - two of **MUSIC 253, MUSIC 254, MUSIC 255, MUSIC 256**
  - participation in at least four terms of Music Ensemble; which may not be counted as part of the 12 course requirement
  - students must demonstrate competence on one instrument (or voice) equal to Grade Ten standing at the Royal Conservatory of Music of Toronto. Normally this is attained through taking Music studio courses - **MUSIC 226, MUSIC 227, MUSIC 326, MUSIC 327**

**Note:** Students electing to take Music studio must arrange for an audition before the Music faculty. Normally a level of performance equal to Grade Eight standing at the Royal Conservatory of Music of Toronto is expected for admission to Music studio.

### Four-Year General Music

Continuation in this academic plan requires a cumulative minimum overall average of 60% and a cumulative minimum Music major average of 65%.

Eligibility for graduation in the Four-Year General Music academic plan includes successful completion of the following requirements:

1. Appropriate Program-level requirements. See [Bachelor of Arts Degree Requirements](#).
2. Music Plan-level requirements:
  - a minimum Music **major average** of 65%
  - at least eight academic course units (16 courses) in Music, including:
    - **MUSIC 110**
    - one of **MUSIC 232, MUSIC 233**
    - three of **MUSIC 253, MUSIC 254, MUSIC 255, MUSIC 256**
    - three of **MUSIC 270, MUSIC 271, MUSIC 370, MUSIC 371**
    - two additional MUSIC courses at the **300-level** or above
  - participation in at least six terms of Music Ensemble; which may not be counted as part of the 16 course requirement
  - students must demonstrate competence on one instrument (or voice) equal to Grade Ten standing at the Royal Conservatory of Music of Toronto. Normally this is attained through taking Music studio courses – **MUSIC 226, MUSIC 227, MUSIC 326, MUSIC 327**

**Note:** Students electing to take Music studio must arrange for an audition before the Music faculty. Normally a level of performance equal to Grade Eight standing at the Royal Conservatory of Music of Toronto is expected for admission to Music studio.

## Honours Music

Continuation in this academic plan requires a cumulative minimum overall average of 60% and a cumulative minimum Music major average of 70%.

Eligibility for graduation in the Honours Music academic plan includes successful completion of the following requirements:

1. Appropriate Program-level requirements. See [Bachelor of Arts Degree Requirements](#).
2. Music Plan-level requirements:
  - a minimum Music **major average** of 70%
  - at least eight academic course units (16 courses) in Music, including:
    - **MUSIC 110**
    - one of **MUSIC 232, MUSIC 233**
    - three of **MUSIC 253, MUSIC 254, MUSIC 255, MUSIC 256**
    - three of **MUSIC 270, MUSIC 271, MUSIC 370, MUSIC 371**
    - two additional MUSIC courses at the **300-level** or above
  - participation in at least six terms of Music Ensemble; which may not be counted as part of the 16 course requirement
  - students must demonstrate competence on one instrument (or voice) equal to Grade Ten standing at the Royal Conservatory of Music of Toronto. Normally this is attained through taking Music studio courses – **MUSIC 226, MUSIC 227, MUSIC 326, MUSIC 327**

**Note:** Students electing to take Music studio must arrange for an audition before the Music faculty. Normally a level of performance equal to Grade Eight standing at the Royal Conservatory of Music of Toronto is expected for admission to Music studio.

## Arts and Business (Co-op and Regular)

Students may combine the Honours Music academic plan with Arts and Business. In addition to the Honours Music requirements, students must also complete the Arts and Business requirements.

## Honours Double Majors

Honours Music may be taken in combination with most Arts majors in which an Honours major is offered or with many Honours majors in other faculties. For further information, see the double majors section of Available Arts Academic Plans.

## Intensive Music Specialization

In combination with the Honours Music plan-level requirements listed above, students interested in pursuing the Intensive Music Specialization will be required to fulfil the following requirements:

- A minimum Music major average of 75%.
- Successful completion of four additional MUSIC courses at the 300-level or above, for a total of ten academic course units (20 courses) in Music.



## Notes

1. The Intensive Music Specialization is only open to students majoring in Honours Music.
2. Students must achieve a cumulative major average of at least 75% in all Music courses counted towards their Honours Music major.
3. Students who have completed courses towards this specialization but are not able to sustain the required 75% major average but are still eligible for Honours standing will normally be allowed to continue in the Honours Music major but without the specialization.

## SPECIALIZATIONS

The following specializations are open to all students majoring in Music. Music students may elect to complete either the Music in Global Context Specialization or the Music and Peace Specialization, but not both.

### Church Music and Worship Specialization

The Church Music and Worship Specialization requires successful completion of 3.0 academic course units:

- MUSIC 222, MUSIC 322
- MUSIC 363/CMW 363/RS 357, MUSIC 364/CMW 364/RS 358  
two of:
  - CMW 201 and CMW 202 (0.25 unit each)
  - RS 152 or RS 250
  - RS 235 or RS 236
  - RS 240/HIST 235

#### Notes:

1. Courses should be chosen in consultation with the Director of the plan. Alternative courses may be approved by the Director.

### Music in Global Context Specialization

The Music in Global Context Specialization requires successful completion of six courses (five half-credit courses and two quarter-credit courses):

- MUSIC 232, MUSIC 233
- three of MUSIC 231, MUSIC 333, MUSIC 334, MUSIC 355, MUSIC 392
- enrolment in two of MUSIC 116, MUSIC 117, MUSIC 216, MUSIC 217, MUSIC 316, MUSIC 317, specified as World Music Ensemble

### Music and Peace Specialization

The Music and Peace Specialization requires successful completion of five courses:

- MUSIC 335
- three of MUSIC 231, MUSIC 232 or MUSIC 233, MUSIC 334, MUSIC 355, an additional PACS course from the list below but not already taken
- one of PACS 201, PACS 202, PACS 203

## Music Minor

Students enrolled in any degree program may pursue a minor designation in Music.

The Music Minor requires successful completion of a minimum of four academic course units (eight courses) in Music with a minimum cumulative average of 65%, including:

- MUSIC 110, MUSIC 270
- six additional MUSIC courses selected in consultation with the Music Department
- participation in at least two terms of Music Ensemble: MUSIC 116, MUSIC 117, MUSIC 216, MUSIC 217, MUSIC 316, MUSIC 317; which may not be counted as part of the eight course requirement.

**Note:** Students electing to take Music studio must arrange for an audition before the Music faculty. Normally a level of performance equal to Grade Eight standing at the Royal Conservatory of Music of Toronto is expected for admission to Music studio. Students pursuing a Music Minor may take a maximum of three terms of Music studio.

## Church Music and Worship Minor

Students enrolled in any degree program may pursue a minor designation in Church Music and Worship.

The Church Music and Worship Minor requires successful completion of a minimum of four academic course units (eight courses) with a minimum cumulative average of 65%, including:

- CMW 363/MUSIC 363/RS 357
- CMW 364/MUSIC 364/RS 358
- one of MUSIC 253, MUSIC 254, MUSIC 262
- one of RS 130/JS 131, RS 235, RS 236
- one of HIST 235/RS 240, HIST 348/RS 344, HIST 379/RS 343, RS 348
- one of RS 151, RS 152, RS 250, RS 257, RS 286
- two of the following (not already selected above):
  - CMW 201 and CMW 202 (two terms of Worship Practicum)
  - MUSIC 222, MUSIC 232, MUSIC 233, MUSIC 376
  - MUSIC 253, MUSIC 254, MUSIC 262

### Notes

1. Courses should be chosen in consultation with the Director of the plan. Alternative courses may be approved by the Director.
2. No one course may fulfill more than one requirement within the Church Music and Worship plan.

## Church Music and Worship Diploma

For those requirements, contact the Music Department or visit <http://ugradcalendar.uwaterloo.ca/page/ARTS-Diploma-in-Church-Music-and-Worship>.

## MUSIC PLAN CHECKLISTS

See pages 26-30.

Name: \_\_\_\_\_ UW ID#: \_\_\_\_\_ Date: \_\_\_\_\_

\_\_\_\_\_ Minimum Total of 30 term courses  
 \_\_\_\_\_ Minimum of 12 Music courses (not including 0.25 courses) **plus** \_\_\_\_\_ 4 terms of Music Ensemble  
 \_\_\_\_\_ Music Average of 65% \_\_\_\_\_ Cumulative Overall Average of 60%  
 \_\_\_\_\_ Minimum of 16 courses over 100-level  
 \_\_\_\_\_ English Language Proficiency Exam

<u>      </u> Music 110				
<u>      </u> 2 Music History:	<u>      </u> 253 (Med/Ren)	<u>      </u> 254 (Bar/Clas)	<u>      </u> 255 (Rom)	<u>      </u> 256 (20 <sup>th</sup> Cent)
<u>      </u> 2 Music Theory:	<u>      </u> 270	<u>      </u> 271		
<u>      </u> 1 World Music:	<u>      </u> 232	<u>      </u> 233		
<u>      </u> 4 terms of Music Ensemble:	<u>      </u> 116 + <u>      </u> 117 (0.25 units each)			
	<u>      </u> 216 + <u>      </u> 217 (0.25 units each)			
<u>      </u> 6 Music Electives:				
<u>      </u> 140 Popular Music	<u>      </u> 246 Soundtracks	<u>      </u> 322 Conducting 2	<u>      </u> 355 Travel	<u>      </u> 376 Composition
<u>      </u> 222 Conducting 1	<u>      </u> 260 Symphony	<u>      </u> 326 Studio 3	<u>      </u> 361 Art Song	<u>      </u> 380 Dir Study1
<u>      </u> 226 Studio 1	<u>      </u> 261 Opera	<u>      </u> 327 Studio 4	<u>      </u> 362 Piano Lit	<u>      </u> 381 Dir Study 2
<u>      </u> 227 Studio 2	<u>      </u> 262 M Vocal Ens	<u>      </u> 332 Aesthetics	<u>      </u> 363 Hymn	<u>      </u> 390 Topics 1
<u>      </u> 231 Music Cognition	<u>      </u> 275 Technology	<u>      </u> 333 M Landscape	<u>      </u> 364 Worship & Music	<u>      </u> 392 Global Topics
<u>      </u> 240 Jazz	<u>      </u> 290 Topics	<u>      </u> 334 Women & M	<u>      </u> 370 Theory 3	<u>      </u> 491 Research Sem
		<u>      </u> 335 M & Peace	<u>      </u> 371 Theory 4	
<u>      </u> Demonstrate competence on one instrument (or voice) equal to Grade 10 standing at RCM.				

**\_\_\_\_ Faculty of Arts Breadth Requirements (see <http://ugradcalendar.uwaterloo.ca/page/ARTS-BA-Breadth-Requirements>):**

___ 2 term courses from Humanities	_____	_____
___ 2 term courses from Languages & Cultures	_____	_____
___ 1 term course from Transdisciplinary Studies	_____	_____
___ 4 term courses from Social Sciences^	_____	_____

       **7 or 8 additional electives** (may include Music courses), depending on Breadth requirements above:

Rev. 29 Aug/17

## **MUSIC PLAN SPECIALIZATIONS**

Note: 1 The Music in Global Context and Music and Peace specializations may not both be taken.

### **Music in Global Context Specialization**

The 12 courses in Music required for a 3-year Music Plan must include:

\_\_\_\_\_ Music 232

\_\_\_\_\_ Music 233

\_\_\_\_\_ 3 of: \_\_\_\_\_ Music 231

\_\_\_\_\_ Music 333

\_\_\_\_\_ Music 355

\_\_\_\_\_ Music 392

The 4 terms of Music Ensemble required for a 3-year Music Plan must include:

\_\_\_\_\_ 2 terms of enrolment in a world music ensemble

## **MUSIC PLAN INTERDISCIPLINARY SPECIALIZATIONS**

### **Music and Peace Specialization\***

\_\_\_\_\_ Music 335

\_\_\_\_\_ 1 of: \_\_\_\_\_ PACS 201 Roots of Conflict, Violence, and Peace

\_\_\_\_\_ PACS 202 Conflict Resolution

\_\_\_\_\_ PACS 203 History of Peace Movements

\_\_\_\_\_ 3 of: \_\_\_\_\_ Music 231

\_\_\_\_\_ Music 232

\_\_\_\_\_ Music 334

\_\_\_\_\_ Music 355

\_\_\_\_\_ an additional PACS course from above

\*Note: Music courses required for the Music and Peace Specialization may all be counted towards the 12 courses required for the 3-year Music Plan. PACS courses taken as part of the Music and Peace Specialization do not count towards the Music requirements of the 3-year Music Plan.

### **Church Music and Worship Specialization**

A) Required courses which can be counted towards completion of the Music requirements

\_\_\_\_\_ MUSIC 222 Conducting 1

\_\_\_\_\_ MUSIC 322 Conducting 2

\_\_\_\_\_ MUSIC/CMW 363 The Christian Hymn /RS 357

\_\_\_\_\_ MUSIC/CMW 364 Worship and Its Music /RS 358

B) Required courses which do not count towards completion of the Music requirements

\_\_\_\_\_ 2 of \_\_\_\_\_ CMW 201 **and** CMW 202 Worship Practicum 1 & 2 (0.25 units each)

\_\_\_\_\_ RS 152 Intro to Christian Theology **or** RS 250 History to Christian Thought

\_\_\_\_\_ RS 235 Jesus: Life and Legacy **or** RS 236 Paul: Life and Letters

\_\_\_\_\_ RS 240/HIST 235 History of Christianity

## 4-YEAR MUSIC PLANS CHECKLIST

Name: \_\_\_\_\_ ID#: \_\_\_\_\_ Date: \_\_\_\_\_

### Overall Degree Requirements:

- \_\_\_\_\_ Minimum total of 40 courses\* [\* \_\_\_\_\_ **plus** MUSIC 316 & 317 if taken before Fall 2016]
- \_\_\_\_\_ Minimum of 16 Music courses (**not** including 0.25 courses) **plus** \_\_\_\_\_ 6 terms of Music Ensemble
- \_\_\_\_\_ Minimum of 4 Music courses at the 300+ level (not including 0.25 courses)
- \_\_\_\_\_ Overall Music average: \_\_\_\_\_ 70% for Honours, Joint Honours, and Arts & Business  
\_\_\_\_\_ 65% for 4-Year General \_\_\_\_\_ 75% for Intensive Specialization
- \_\_\_\_\_ Cumulative Overall Average of 60%
- \_\_\_\_\_ Minimum of 16 courses above the 100- level
- \_\_\_\_\_ English Language Proficiency

### Music Requirements:

- \_\_\_\_\_ MUSIC 110
- \_\_\_\_\_ 3 music history: \_\_\_\_\_ 253 \_\_\_\_\_ 254 \_\_\_\_\_ 255 \_\_\_\_\_ 256
- \_\_\_\_\_ 3 music theory: \_\_\_\_\_ 270 \_\_\_\_\_ 271 \_\_\_\_\_ 370 \_\_\_\_\_ 371
- \_\_\_\_\_ 1 world music: \_\_\_\_\_ 232 \_\_\_\_\_ 233
- \_\_\_\_\_ 6 terms of Music Ensemble \_\_\_\_\_ 116 + \_\_\_\_\_ 117 (0.25 credits each)  
\_\_\_\_\_ 216 + \_\_\_\_\_ 217 (0.25 credits each)  
\_\_\_\_\_ 316 + \_\_\_\_\_ 317 (0.25 credits each)
- \_\_\_\_\_ 8 elective courses in Music (at least 4 at 300- or 400-level):
  - \_\_\_\_\_ 140 Popular Music \_\_\_\_\_ 261 Opera \_\_\_\_\_ 334 Women & M \_\_\_\_\_ 381 Directed Study 2
  - \_\_\_\_\_ 222 Conducting 1 \_\_\_\_\_ 262 Music for Vocal Ens \_\_\_\_\_ 335 M & Peace \_\_\_\_\_ 390 Special Topics
  - \_\_\_\_\_ 226 Music Studio 1 \_\_\_\_\_ 275 Music Technology \_\_\_\_\_ 355 Travel \_\_\_\_\_ 392 Global Topics
  - \_\_\_\_\_ 227 Music Studio 2 \_\_\_\_\_ 290 Topics \_\_\_\_\_ 361 Art Song \_\_\_\_\_ 426 Music Studio 5
  - \_\_\_\_\_ 231 Music Cognition \_\_\_\_\_ 322 Conducting 2 \_\_\_\_\_ 362 Piano Lit \_\_\_\_\_ 427 Music Studio 6
  - \_\_\_\_\_ 240 Jazz \_\_\_\_\_ 326 Music Studio 3 \_\_\_\_\_ 363 Christian Hymn \_\_\_\_\_ 428 Grad Recital
  - \_\_\_\_\_ 246 Soundtracks \_\_\_\_\_ 327 Music Studio 4 \_\_\_\_\_ 364 Worship & M \_\_\_\_\_ 491 Research Seminar
  - \_\_\_\_\_ 260 Symphony \_\_\_\_\_ 332 Music Aesthetics \_\_\_\_\_ 376 Composition \_\_\_\_\_ 492 Hons Thesis
  - \_\_\_\_\_ 333 M & Landscape \_\_\_\_\_ 380 Directed Study 1
- \_\_\_\_\_ Demonstrate competence on one instrument or voice equivalent to Grade 10 RCM standing.

### Non-Music Requirements: (only for Arts students)

- \_\_\_\_\_ Faculty of Arts Breadth Requirements
  - \_\_\_\_\_ 2 term courses from Humanities \_\_\_\_\_
  - \_\_\_\_\_ 2 term courses from Languages & Cultures \_\_\_\_\_
  - \_\_\_\_\_ 1 term course from Transdisciplinary Studies \_\_\_\_\_
  - \_\_\_\_\_ 4 term courses from Social Sciences\* \_\_\_\_\_
- \_\_\_\_\_ \*[No more than 2 courses in any one discipline within Social Sciences]

- \_\_\_\_\_ **12 or 13 additional term courses** (may include MUSIC courses), depending on Breadth requirements above:

_____	_____	_____	_____
_____	_____	_____	_____
_____	_____	_____	_____

**NOTE:** It is the student's responsibility to ensure that the plan requirements are met according to the Undergraduate Calendar: <http://ugradcalendar.uwaterloo.ca>

## MUSIC PLAN SPECIALIZATIONS

Notes: 1 The Intensive Music Specialization is only available with Honours Music plans.  
2 The Music in Global Context and Music and Peace specializations may not both be taken.

### Intensive Music Specialization

\_\_\_\_\_ 75% Overall Music average  
\_\_\_\_\_ 4 additional 300- or 400-level courses in Music, for a total of 20 Music courses plus 6 terms of Music Ensemble

---

### Music in Global Context Specialization

The 16 courses in Music required for a 4-year Music Plan must include:

\_\_\_\_\_ Music 232  
\_\_\_\_\_ Music 233  
\_\_\_\_\_ 3 of: \_\_\_\_\_ Music 231  
                                \_\_\_\_\_ Music 333  
                                \_\_\_\_\_ Music 334  
                                \_\_\_\_\_ Music 355  
                                \_\_\_\_\_ Music 392

The 6 terms of Music Ensemble required for a 4-year Music Plan must include:

\_\_\_\_\_ 2 terms of enrolment in a world music ensemble

## MUSIC PLAN INTERDISCIPLINARY SPECIALIZATIONS

### Music and Peace Specialization\*

\_\_\_\_\_ Music 335  
\_\_\_\_\_ 1 of: \_\_\_\_\_ PACS 201 Roots of Conflict, Violence, and Peace  
                                \_\_\_\_\_ PACS 202 Conflict Resolution  
                                \_\_\_\_\_ PACS 203 History of Peace Movements  
\_\_\_\_\_ 3 of: \_\_\_\_\_ Music 231  
                                \_\_\_\_\_ Music 232 or \_\_\_\_\_ Music 233  
                                \_\_\_\_\_ Music 334  
                                \_\_\_\_\_ Music 355  
                                \_\_\_\_\_ an additional PACS course from above

\*Note: Music courses required for the Music and Peace Specialization may all be counted towards the 16 courses required for any 4-year Music Plan. PACS courses taken as part of the Music and Peace Specialization do not count towards the Music requirements of any 4-year Music Plan.

### Church Music and Worship Specialization

A) Required courses which can be counted towards completion of the Music requirements

\_\_\_\_\_ MUSIC 222 Conducting 1  
\_\_\_\_\_ MUSIC 322 Conducting 2  
\_\_\_\_\_ MUSIC/CMW 363 The Christian Hymn /RS 357  
\_\_\_\_\_ MUSIC/CMW 364 Worship and Its Music /RS 358

B) Required courses which do not count towards completion of the Music requirements

\_\_\_\_\_ 2 of \_\_\_\_\_ CMW 201 **and** CMW 202 Worship Practicum 1 & 2 (0.25 units each)\*  
                                \_\_\_\_\_ RS 152 Intro to Christian Theology **or** RS 250 History to Christian Thought  
                                \_\_\_\_\_ RS 235 Jesus: Life and Legacy **or** RS 236 Paul: Life and Letters  
                                \_\_\_\_\_ RS 240/HIST 235 History of Christianity

\*Note: CMW 201 and CMW 202 may be taken in lieu of MUSIC 316 and MUSIC 317 respectively.

## MUSIC MINOR PLAN CHECKLIST

Name: \_\_\_\_\_ UW ID#: \_\_\_\_\_ Date: \_\_\_\_\_

Major Program: \_\_\_\_\_

NB: Students enrolled in any degree program may pursue a minor designation in Music.

### Overall Requirements:

\_\_\_\_ Minimum Total of 8 Music term courses    plus    \_\_\_\_ 2 terms of Music Ensemble

\_\_\_\_ Music Average of 65%

### Music Requirements:

\_\_\_\_ Music 110: Music in Cultural Contexts

\_\_\_\_ Music 270: Music Theory I

\_\_\_\_ 2 terms of Music Ensemble:                      \_\_\_\_ 116 + \_\_\_\_ 117 (0.25 units each)

\_\_\_\_ 6 Music Electives:

____ 140 Popular Music	____ 253 Med. & Ren.	____ 290 Topics	____ 363 Hymn
____ 222 Conducting 1	____ 254 Bar. & Clas.	____ 322 Conducting 2	____ 364 Worship & Music
____ 226 Studio 1	____ 255 Romantic	____ 326 Studio 3	____ 370 Theory 3
____ 227 Studio 2	____ 256 20 <sup>th</sup> Century	____ 332 Aesthetics	____ 371 Theory 4
____ 231 Music Cognition	____ 260 Symphony	____ 333 M & Landscape	____ 376 Composition
____ 232 Music/Global	____ 261 Opera	____ 334 Women & Music	____ 380 Directed Study 1
____ 233 M Rhythm/Global	____ 262 MVocal Ens	____ 335 Music & Peace	____ 381 Directed Study 2
____ 240 Jazz	____ 271 Theory 2	____ 355 Travel	____ 390 Special Topics
____ 246 Soundtracks	____ 275 Technology	____ 361 Art Song	____ 392 Global Topics
		____ ____ 362 Piano Lit	

**NB: Music 111: Fundamentals of Music Theory and additional Music Ensembles do not count towards the Minor in Music.**

**NOTE: it is the student's responsibility to ensure that the plan requirements are met according to the Undergraduate Calendar:** <http://ugradcalendar.uwaterloo.ca>

**See <https://uwaterloo.ca/music/courses> for a list of when our courses are offered, as not all are offered every term.**



