

Academic Advising Q&A Session



UNIVERSITY OF
WATERLOO

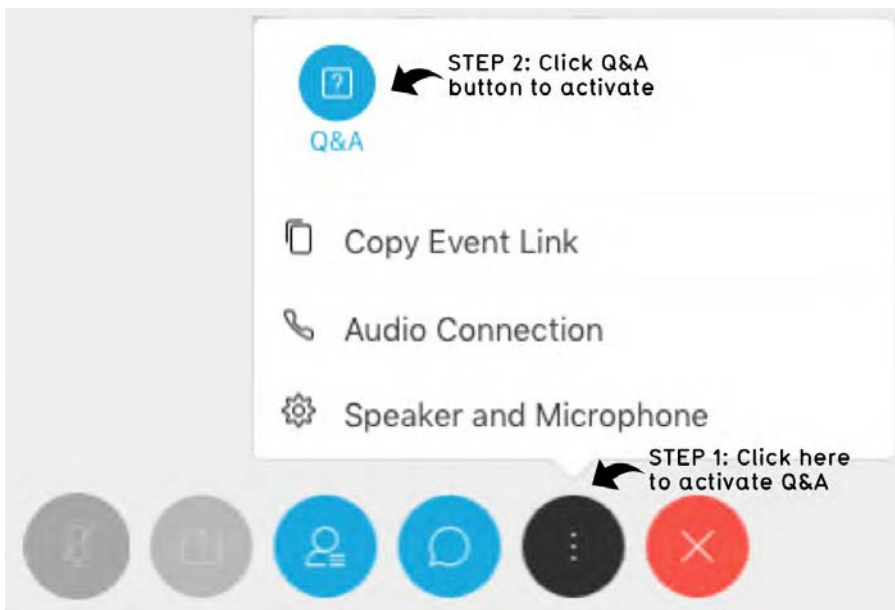
FACULTY OF
MATHEMATICS

In case of technical difficulties


- Presentation is being recorded.
- A link to the recording of this presentation will be available after this Q&A session. You can find this link on our New Math Student website (uwaterloo.ca/new-math-students) by the end of the week.



Questions and Answers (Q&A)



 ~20 minutes of presentation with ~40 minutes for Q&A

 Feel free to ask your questions throughout the presentation

 Only ask your question once

 The panelists will respond to questions after the presentation

What we plan to cover today:

- **Tips/advice for Fall 2020**
- **How to find support**
- **Winter 2021 course selection**



TIPS/ADVICE FOR FALL 2020

What should you have done already?

- **Read your syllabus/course outline; refer to it throughout the term if you have questions.**
- **Understand the requirements to pass the course; for example, you may have to pass or submit all the assignments to pass the class or you may have to pass the final to pass the class.**
- **Learned how to contact your instructor.**
- **Struggled with something.**



What are differences between high school and university?

- **University learning environment is self-directed study where your instructors will be guiding your learning, but you will have to do practice and work outside lectures.**
- **70% is a great average to have in university. Excellent standing is obtained with an 80+ cumulative average.**



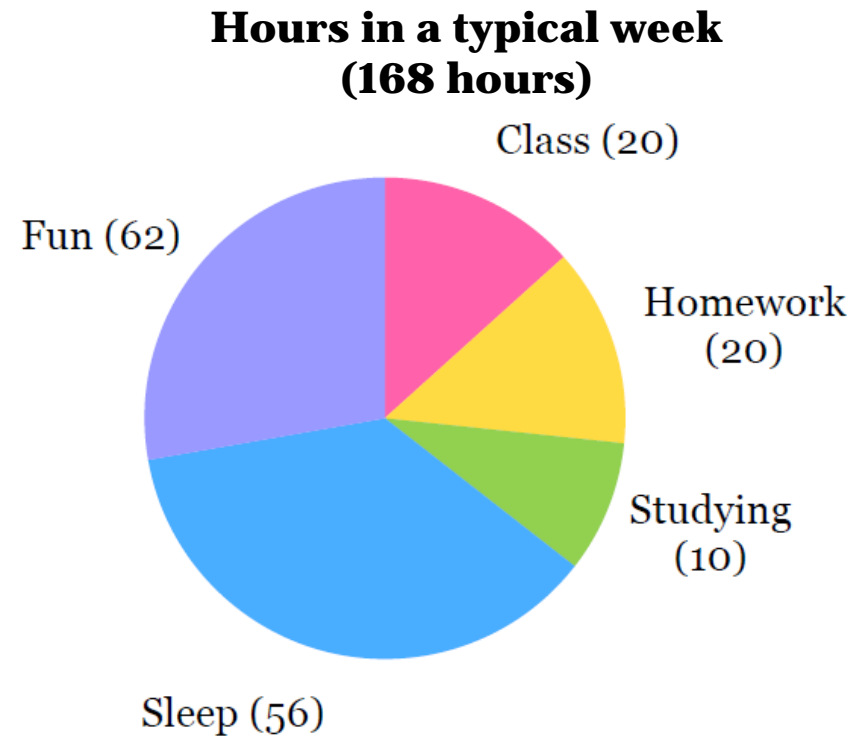
Be open to new ways of viewing yourself and your attitude

- **Your attitude towards learning and towards your identity as a student will impact how well you're able to learn.**
- **Try to avoid negative, self-fulfilling prophecies.**
- **Don't expect to be top of your class; you will stumble, these are difficult topics, and they require effort which is what you're here to do.**



Time management

- backwards planning – for example getting ready to go to class on time, also applying this logic to preparing for midterms.
- build in downtime and buffer time in case things don't go as planned.



Academic Integrity

- Act in a manner that you can be **proud of**.
- Be **honest** and **trustworthy**, showing respect for your instructors and your classmates.
- Have the **courage** to act in a fair and reasonable way.
- Don't post assignment/quiz/test questions online.
- Unless it's explicitly permitted, don't use external websites. (Note that even if you are just using the site to check your answers, that is *using* the site!)
- If you're not sure what you can use and when, **check with your instructor!**
- If you're not sure if you should be doing something independently, **check with your instructor!**



WHERE TO FIND SUPPORT?

Where to find information

- **Read your @uwaterloo.ca emails**
- **The Undergraduate Calendar** (ugradcalendar.uwaterloo.ca) is the most important document for your studies at Waterloo; includes information of what you need to do to graduate and what requirements you need to have to take a course etc.
- Understand the **Important Dates** (uwaterloo.ca/registrar/important-dates) for each academic term including the last day to drop with 100% tuition refund, last day to drop with 50% tuition refund and last date to drop with a WD.



Math Undergraduate Office (MUO) – mathuo@uwaterloo.ca

- Provide guidance on navigating the university and its policies/procedures
- Course selection/enrolment issues
- Coordinates the submission of *Verification of Illness* Forms (VIFs)
- Questions about grades, midterms, final exam schedules and Incompletes (INCs)
- General university enquiries → we can direct you where you need to go.
- Refer students to appropriate departments and services for follow-up

uwaterloo.ca/math/campus-resources



UNIVERSITY OF
WATERLOO

FACULTY OF
MATHEMATICS

Talk to your academic advisor

Academic advising supports you by:

- providing you with academic advice, such as course choices or degree requirements.
- giving you help in exploring your options.
- having a place to share your questions and concerns.
- providing referrals that fit with your individual needs.

<https://uwaterloo.ca/math/advising-statement>



UNIVERSITY OF
WATERLOO

FACULTY OF
MATHEMATICS

Talk to your academic advisor

The first-year/undeclared advisors are available Monday to Friday to answer your questions by email and during one-on-one virtual advising appointments.

Email: mathadvisor@uwaterloo.ca

Schedule a virtual advising appointment:

<https://uwaterloo.ca/math/academic-advising#FY>

Are you having trouble with the course material?

- **Have you contacted your instructor and/or Teaching Assistant (TA)? Ask your instructor/TA what might be a good idea for your specific problem.**
- **Have you used the course resources such as discussion boards like Piazza or office hours?**
- **Have you looked at the assignment solutions to learn more about mistakes you may have made?**



If you are struggling, maybe drop a course(s)?

- A WD will be on your transcript and it stands for withdrawn. A WD counts as a course attempt and you're allowed three attempts at a course.
- If you drop a course **between now and October 26**, you will receive a WD and a 50% tuition refund for that course.
- If you drop a course **between October 27 and November 23**, you will receive a WD but no tuition refund.
- Dropping a course is better than failing a course.
- Dropping a course may help with your stress by reducing your overall workload so you can direct your time to other courses



Do I need to stay in 5 courses in Fall 2020?

- Full-time status is 1.5 units (i.e. 3 courses) or more.
- A WD for a course is better than a fail.
- Some courses require a certain grade to take the next course. For example, a 60%+ in MATH 135 is required to take MATH 136. This means if you get less than 60% in MATH 135, you'll need to take the course again.
- Check the undergraduate calendar – ugradcalendar.uwaterloo.ca – for the prerequisites for courses.



AccessAbility Services

- Whether you have a temporary or permanent, known or unknown disability, illness, or condition, AccessAbility Services supports students with developing individualized academic accommodation plans for all components of your academic career.
- Can be contacted by calling + 1 519-888-4576 ext. 45231 Monday to Friday between 8.30 am and 4.30 pm Waterloo time or by emailing [**access@uwaterloo.ca**](mailto:access@uwaterloo.ca).
- Their website can be accessed at:

[**https://uwaterloo.ca/accessability-services**](https://uwaterloo.ca/accessability-services)



Counselling Services

- Provides programming and services to help you lead a healthy and balanced life.
- Can be contacted by calling + 1 519-888-4567 ext. 32655 Monday to Friday between 8.30 am and 4.30 pm Waterloo time.
- Resources on their website:

uwaterloo.ca/campus-wellness/counselling-services

Helplines:

- Good2Talk (1-866-925-5454) or **good2talk.ca** → good option for students located in Canada.
- EmpowerMe (1-833-628-5589) or **uwaterloo.ca/campus-wellness/services/empower-me** → good option for students in Canada and outside Canada.



WINTER 2021 COURSE SELECTION

Build your self-awareness

- Pay attention to what you like (and what you don't like!)...
 - To help you decide what to major in (or what not to major in).
 - Maybe even decide what career path you want.
- Don't be afraid to change your mind; your whole life is a long time to do something you don't enjoy!
- Have a Plan A and a Plan B (and even a Plan C) in case you don't get into your chosen major.
- Don't be afraid if you don't know what you want to major in yet!



Browse the majors if you're in Honours Mathematics

- A good place to begin is our Declaring Majors webpage:

uwaterloo.ca/math/declaring-majors

- Use the New Math Students webpage for suggested courses for your plan

uwaterloo.ca/new-math-students



UNIVERSITY OF
WATERLOO

FACULTY OF
MATHEMATICS

Course selection for Winter 2021

- Course selection is a wish list of the courses you want to take in Winter 2021.
 - ✓ **Make sure you choose a List 1 communications course if you did not complete one in Fall term.**
 - ✓ Choose the next CS course (CS 116/136/146) as applicable
 - ✓ Choose the next Algebra course (MATH 136/146)
 - ✓ Choose the next Calculus course (MATH 138/148)
 - ✓ Choose non-math courses
- If you've dropped a course in Fall, adjust your Winter course selection accordingly.
- Course selection is from October 23 to November 5, 2020.
- Drop/Add Period begins with appointments on November 30 and December 1 with open enrolment continuing until January 18 (the last day to add courses for Winter 2021)



Some details about Winter 2021 courses

- The only courses offered on-campus will be MATH 136 and MATH 138; priority will be given to students who were enrolled in on-campus sections in Fall 2020.

MATH 146 and MATH 148

- students who pass MATH 145 or 147 will be given priority.
- Students who receive a 90%+ in MATH 135 or MATH 137 will be considered for enrolment in MATH 146/148.
- Students should email the MUO (mathuo@uwaterloo.ca) to express their interest in one or more of the advanced courses.
- Once grades are available from Fall 2020, students will be ranked according to their grade in the applicable course. Students will be informed by the end of the first week of classes in Winter 2021.





mathadvisor@uwaterloo.ca

uwaterloo.ca/math/academic-advising