

# Course Schedule

**IMPORTANT: ALL TIMES EASTERN** - Please see the [University Policies](#) section of your Syllabus for details.

Week	Module	Readings and Other Assigned Material	Activities and Assignments	Begin Date	End / Due Date	Weight (%)
<b>Week 1</b>	<a href="#">Module 01: Introduction to Physiological Psychology</a>	Chapter 1: 2-14, 24-26.	<a href="#">Vocabulary Quiz 01</a>		Monday, January 15, 2018 at 11:59 PM	1%
<b>Week 2</b>	<a href="#">Module 02: Neurophysiology and Neuronal Structure</a>	Chapter 2: 28-65.	<a href="#">Vocabulary Quiz 02</a>		Monday, January 22, 2018 at 11:59 PM	1%
<b>Week 3</b>	<a href="#">Module 03: Neuroanatomy</a>	Chapter 3: 67-98.	<a href="#">Vocabulary Quiz 03</a>		Monday, January 29, 2018 at 11:59 PM	1%
			<a href="#">Midterm Test 01</a> [This test is available for 65 hours only. You must complete the midterm in a 60 minute period chosen within the access (start and end) times shown here.]	Sunday, January 28, 2018 at 6:00 AM	Tuesday, January 30, 2018 at 11:59 PM	15%
<b>Week 4</b>	<a href="#">Module 04: Research Methods</a>	Chapter 5: 131-163.	<a href="#">Vocabulary Quiz 04</a>		Monday, February 5, 2018 at 11:59 PM	1%
<b>Week 5</b>	<a href="#">Module 05: Vision</a>	Chapter 6: 165-206.	<a href="#">Vocabulary Quiz 05</a>		Monday, February 12, 2018 at 11:59 PM	1%
<b>Reading Week - Study Days (Sunday, February 18, 2018 to Saturday, February 24, 2018)</b>						
<b>Week 6</b>	<a href="#">Module 06: The Nonvisual Senses</a>	Chapter 7: 208-254.	<a href="#">Vocabulary Quiz 06</a>		Monday, February 26, 2018 at 11:59 PM	1%
<b>Week 7</b>	<a href="#">Module 07: The</a>	Chapter	<a href="#">Vocabulary Quiz</a>		Monday,	1%

	<a href="#">Motor System</a>	8; 256-287.	<a href="#">07</a>		March 5, 2018 at 11:59 PM	
			<a href="#">Midterm Test 02</a> [This test is available for 65 hours only. You must complete the midterm in a 90 minute period chosen between the access (start and end) times shown here.]	Sunday, March 4, 2018 at 6:00 AM	Tuesday, March 6, 2018 at 11:59 PM	<b>25%</b>
<b>Week 8</b>	<a href="#">Module 08: Emotion</a>	Chapter 11: 360-392.	<a href="#">Vocabulary Quiz 08</a>		Monday, March 12, 2018 at 11:59 PM	<b>1%</b>
<b>Week 9</b>	<a href="#">Module 09: Learning and Memory</a>	Chapter 13: 435-478.	<a href="#">Vocabulary Quiz 09</a>		Monday, March 19, 2018 at 11:59 PM	<b>1%</b>
<b>Week 10</b>	<a href="#">Module 10: Communication</a>	Chapter 14: 480-515.	<a href="#">Vocabulary Quiz 10</a>		Monday, March 26, 2018 at 11:59 PM	<b>1%</b>
<b>Week 11</b>			<a href="#">Bonus Points</a>	Online Study Surveys	Wednesday, April 4, 2018 at 11:59 PM	<b>5% (Bonus)</b>
<b>Week 12</b>				Review Articles		
<a href="#">Final Examination</a>	You must achieve at least 50% on the final exam to pass the course. If you do not, your final exam mark will be considered as your final grade.					<b>50%</b>

## Final Examination Arrangements and Schedule

Please carefully review the information about [writing exams](#) for online courses, including dates, locations, how to make examination arrangements, writing with a proctor, and deadlines.

If you are taking **any on-campus courses**, you will automatically be scheduled to write your exam on campus. No action is required.

If you are taking **only online courses**, do one of the following:

- o If your **address in QUEST is within 100 km** of an [examination centre](#), you must choose an exam centre in [Quest](#) by **Sunday, January 14, 2018**. This must be done each term.

- If your address in Quest is **more than 100 km from an exam centre, you must arrange for a proctor**. Please review the guidelines and deadlines for [writing with a proctor](#). This must be done each term.

Your online course exam schedule will be available in Quest approximately four weeks before your exam date(s). Instructions on how to find your schedule are posted on the [Quest Help](#) page.

University of Waterloo Senate-approved [academic regulations related to assignments, tests, and final exams](#) can be found on the Registrar's website.

## Official Grades and Course Access

---

Official Grades and Academic Standings are available through [Quest](#).

Your access to this course will continue for the duration of the current term. You will not have access to this course once the next term begins.

# Contact Information

## Announcements

Your instructor uses the **Announcements** widget on the **Course Home** page during the term to communicate new or changing information regarding due dates, instructor absence, etc., as needed. You are expected to read the announcements on a regular basis.

To ensure you are viewing the complete list of announcements, you may need to click **Show All Announcements**.

## Discussions

A **General Discussion** topic\* has also been made available to allow students to communicate with peers in the course. Your instructor may drop in at this discussion topic.

## Contact Us

Who and Why	Contact Details
<p><b>Instructor and TA</b></p> <ul style="list-style-type: none"> <li>Course-related questions (e.g., course content, deadlines, assignments, etc.)</li> <li>Questions of a personal nature</li> </ul>	<p><b>Post your course-related questions</b> to the <b>Ask the Instructor</b> discussion topic*. This allows other students to benefit from your question as well.</p> <p><b>Questions of a personal nature</b> can be directed to your instructor or your TA.</p> <p>Instructor: Sarah McCrackin  <a href="mailto:sarah.mccrackin@uwaterloo.ca">sarah.mccrackin@uwaterloo.ca</a></p> <p>TA: Melissa Meade  <a href="mailto:mmeade@uwaterloo.ca">mmeade@uwaterloo.ca</a></p> <p>Your instructor checks email and the <b>Ask the Instructor</b> discussion topic* frequently and will make every effort to reply to your questions within 24–48 hours, Monday to Friday.</p>
<p><b>Technical Support,</b> Centre for Extended Learning</p> <ul style="list-style-type: none"> <li>Technical problems with Waterloo LEARN</li> </ul>	<p><a href="mailto:learnhelp@uwaterloo.ca">learnhelp@uwaterloo.ca</a></p> <p>Include your full name, WatIAM user ID, student number, and course name and number.</p> <p>Technical support is available during regular business hours, Monday to Friday, 8:30 AM to 4:30 PM (Eastern Time).</p> <p><a href="#">LEARN Help Student Documentation</a></p>
<p><b>Learner Support Services,</b></p>	<p><a href="#">Student Resources</a></p>

Centre for Extended Learning

- General inquiries
- WatCards (Student ID Cards)
- Examination information

[extendedlearning@uwaterloo.ca](mailto:extendedlearning@uwaterloo.ca)  
+1 519-888-4002

Include your full name, WatIAM user ID, student number, and course name and number.

---

\*Discussion topics can be accessed by clicking **Connect** and then **Discussions** on the course navigation bar above.

# Course Description and Objectives

## Description

---

This course surveys the field of physiological psychology. Psychology deals with old questions, but it is a young science. Psychology transitioned from philosophy to science when it combined the philosophical questions about the nature of mind and consciousness with the new scientific techniques of physiology. Today physiological psychology is the study of how behavior is determined and influenced by physiological processes. It involves all the methods of neuroscience: genetics, anatomy, electrophysiology; and all the topics of psychology: emotion, perception, and consciousness. In this course you will survey these topics and approaches. A knowledge of physiological psychology is a foundation for all higher studies in all areas of psychology.

## Objectives

---

By the end of this course, students should have a working knowledge of

- the research methods of physiological psychology,
- the basic nervous system anatomy at both the gross and microscopic level,
- the basic electrical and chemical events which explain neuronal communication,
- the basic neural bases of vision, audition, somatosensation, and motor behavior, and
- the cellular mechanisms of learning, memory, emotion, and language.

*This online course was developed by Britt Anderson, with instructional design and multimedia development support provided by the Centre for Extended Learning. Further media production was provided by Instructional Technologies and Multimedia Services.*

# Grade Breakdown

The following table represents the grade breakdown of this course.

<b>Activities and Assignments</b>		<b>Weight (%)</b>
Online Tests	10 Vocabulary Quizzes	10%
	Midterm Test 01	15%
	Midterm Test 02	25%
Bonus Points		5%
Final Examination		50%

---

Note: You must achieve at least 50% on the final examination to pass the course. If you do not, your final examination mark will be considered as your final grade.

---

# About the Course Author and Instructor

## Course Author — Britt Anderson

---

Britt Anderson was born and raised in the United States.

He began his professional career as a physician, graduating from the University Of Southern California School Of Medicine in 1984, and completed residency training in neurology at UT Southwestern in Dallas Texas.

Subsequently, he was a practicing neurologist in the US Air Force and on the faculty of the University Of Alabama School of Medicine in Birmingham, Alabama. While at UAB, he was affiliated with the university's Alzheimer's Disease Center.

Dr. Anderson augmented his medical training by acquiring a PhD in Brain Science at Brown University in Providence, RI where his doctoral and post-doctoral research concentrated on computational approaches to understanding the neural correlates of visual perception.

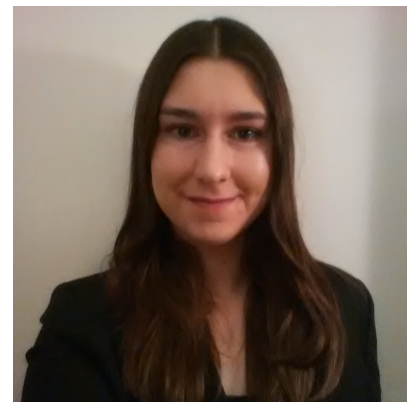
Today, Dr Anderson is a faculty member in the Psychology Department at the University of Waterloo and affiliated with UW's Centre for Theoretical Neuroscience.



## Course Instructor — Sarah McCrackin

---

Sarah McCrackin (M.A.) is a Ph.D. candidate in the Cognitive Neuroscience program at the University of Waterloo. She uses eye-tracking and electroencephalography (EEG) to answer questions about how eye-gaze influences the way we perceive and respond to faces. Her current research is focused on characterizing the link between eye-gaze, theory of mind, and empathy.





# Materials and Resources

## Textbook

---

### Required

1. Neil R. Carlson. (2012). *Physiology of Behavior (11th Edition)*. Allyn and Bacon.

Purchase of the textbook may come bundled with access to the [MyPsychLab](#) web site which includes media designed to assist your learning. The link will take you to the welcome page, where first time users select register and then select register next to the textbook title, and then enter the Access Code found on the Student Access Code Card included with the textbook.

---

**For textbook ordering information, please contact the [Waterloo Bookstore](#).**

For your convenience, you can compile a list of required and optional course materials through [BookLook](#) using your Quest userID and password. If you are having difficulties ordering online and wish to call the Waterloo Bookstore, their phone number is +1 519 888 4673 or toll-free at +1 866 330 7933. Please be aware that textbook orders **CANNOT** be taken over the phone.

---

## Resources

- [Library services for co-op students on work term and distance education students](#)

# Mental Health Support

## On Campus

- Counselling Services: [counselling.services@uwaterloo.ca](mailto:counselling.services@uwaterloo.ca) 519-888-4567 ext. 32655
- [UW MATES](#): one-to-one peer support program offered by Federation of Students (FEDS) and Counselling Services
- Health Services Emergency service: located across the creek from Student Life Centre

## Off campus, 24/7

- [Good2Talk](#): Free confidential help line for post-secondary students. Phone: 1-866-925-5454
- Grand River Hospital: Emergency care for mental health crisis. Phone: 519-749-433 ext. 6880
- [Here 24/7](#): Mental Health and Crisis Service Team. Phone: 1-844-437-3247
- [OK2BME](#): Set of support services for lesbian, gay, bisexual, transgender, or questioning teens in Waterloo. Phone: 519-884-0000 extension 213

Full details can be found online at the Faculty of ARTS website: [Get mental health support when you need it](#)

Download [UWaterloo and regional mental health resources \(PDF\)](#)

Download the [WatSafe app](#) to your phone to quickly access mental health support information

# Course Policies

## Final Examination Policy

---

You must achieve at least 50% on the final examination to pass the course. If you do not, your final examination mark will be considered as your final grade.

# University Policies

## Submission Times

---

Please be aware that the University of Waterloo is located in the **Eastern Time Zone** (GMT or UTC-5 during standard time and UTC-4 during daylight saving time) and, as such, the time that your activities and/or assignments are due is based on this zone. If you are outside the Eastern Time Zone and require assistance with converting your time, please try the [Ontario, Canada Time Converter](#).

## Accommodation Due to Illness

---

**If your instructor has provided specific procedures for you to follow if you miss assignment due dates, term tests, or a final examination, adhere to those instructions.** Otherwise:

### Missed Assignments/Tests/Quizzes

Contact the instructor as soon as you realize there will be a problem, and preferably within 48 hours, but no more than 72 hours, have a medical practitioner complete a [Verification of Illness Form](#).

**Email** a scanned copy of the Verification of Illness Form to your instructor. In your email to the instructor, provide your name, student ID number, and exactly what course activity you missed.

Further information regarding Management of Requests for Accommodation Due to Illness can be found on the [Accommodation due to illness](#) page.

### Missed Final Examinations

If this course has a final exam and if you are unable to write a final examination due to illness, seek medical treatment and have a medical practitioner complete a [Verification of Illness Form](#). Email a scanned copy to the Centre for Extended Learning (CEL) at [extendedlearning@uwaterloo.ca](mailto:extendedlearning@uwaterloo.ca) within 48 hours of your missed exam. Make sure you include your name, student ID number, and the exam(s) missed. You will be **REQUIRED** to hand in the original completed form before you write the make-up examination.

After your completed Verification of Illness Form has been received and processed, you will be emailed your alternate exam date and time. This can take up to 2 business days. If you are within **150 km** of Waterloo you should be prepared to write in Waterloo on the additional

CEL [exam dates](#). If you live outside the 150 km radius, CEL will work with you to make suitable arrangements.

Further information about [Examination Accommodation Due to Illness](#) regulations is available in the Undergraduate Calendar.

## Academic Integrity

---

In order to maintain a culture of academic integrity, members of the University of Waterloo community are expected to promote honesty, trust, fairness, respect, and responsibility. **If you have not already completed the online tutorial regarding academic integrity you should do so as soon as possible.** Undergraduate students should see the [Academic Integrity Tutorial](#) and graduate students should see the [Graduate Students and Academic Integrity](#) website.

Proper citations are part of academic integrity. Citations in CEL course materials usually follow CEL style, which is based on APA style. Your course may follow a different style. If you are uncertain which style to use for an assignment, please confirm with your instructor or TA.

For further information on academic integrity, please visit the [Office of Academic Integrity](#).

## Discipline

---

A student is expected to know what constitutes [academic integrity](#) to avoid committing an academic offence, and to take responsibility for his/her actions. A student who is unsure whether an action constitutes an offence, or who needs help in learning how to avoid offences (e.g., plagiarism, cheating) or about “rules” for group work/collaboration, should seek guidance from the course instructor, academic advisor, or the undergraduate Associate Dean. For information on categories of offences and types of penalties, students should refer to [Policy 71 - Student Discipline](#). For typical penalties, check [Guidelines for the Assessment of Penalties](#).

## Appeals

---

A decision made or penalty imposed under [Policy 70 - Student Petitions and Grievances](#), (other than a petition) or [Policy 71 - Student Discipline](#), may be appealed if there is a ground. A student who believes he/she has a ground for an appeal should refer to [Policy 72 - Student Appeals](#).

## Grievance

---

A student who believes that a decision affecting some aspect of his/her university life has been unfair or unreasonable may have grounds for initiating a grievance. Read [Policy 70 -](#)

[Student Petitions and Grievances](#), Section 4. When in doubt please be certain to contact the department's administrative assistant who will provide further assistance.

## Final Grades

---

In accordance with [Policy 46 - Information Management](#), Appendix A - Access to and Release of Student Information, the Centre for Extended Learning does not release final examination grades or final course grades to students. Students must go to [Quest](#) to see all final grades. Any grades posted in Waterloo LEARN are unofficial.

## AccessAbility Services

---

[AccessAbility Services](#), located in Needles Hall, collaborates with all academic departments to arrange appropriate accommodations for students with disabilities without compromising the academic integrity of the curriculum. If you require academic accommodation to lessen the impact of your disability, please register with AccessAbility Services at the beginning of each academic term and for each course.

## Accessibility Statement

---

The Centre for Extended Learning strives to meet the needs of all our online learners. Our ongoing efforts to become aligned with the [Accessibility for Ontarians with Disabilities Act \(AODA\)](#) are guided by University of Waterloo accessibility [Legislation](#) and policy and the [World Wide Web Consortium's \(W3C\) Web Content Accessibility Guidelines \(WCAG\) 2.0](#). The majority of our online courses are currently delivered via the Desire2Learn Learning Environment. Learn more about [Desire2Learn's Accessibility Standards Compliance](#).

## Use of Computing and Network Resources

---

Please see the [Guidelines on Use of Waterloo Computing and Network Resources](#).

## Copyright Information

---

### UWaterloo's Web Pages

All rights, including copyright, images, slides, audio, and video components, of the content of this course are owned by the course author, unless otherwise stated. These web pages are owned or controlled by the University of Waterloo, Centre for Extended Learning. By accessing the web pages, you agree that you may only download the content for your own personal, non-commercial use. You are not permitted to copy, broadcast, download, store (in any medium), transmit, show or play in public, adapt, or change in any way the content of these web pages for any other purpose whatsoever without the prior written permission of the course author and the University of Waterloo, Centre for Extended Learning.

## Other Sources

Respect the copyright of others and abide by all copyright notices and regulations when using the computing facilities provided for your course of study by the University of Waterloo. No material on the Internet or World Wide Web may be reproduced or distributed in any material form or in any medium, without permission from copyright holders or their assignees. To support your course of study, the University of Waterloo has provided hypertext links to relevant websites, resources, and services on the web. These resources must be used in accordance with any registration requirements or conditions which may be specified. You must be aware that in providing such hypertext links, the University of Waterloo has not authorized any acts (including reproduction or distribution) which, if undertaken without permission of copyright owners or their assignees, may be infringement of copyright. Permission for such acts can only be granted by copyright owners or their assignees.

If there are any questions about this notice, please contact the University of Waterloo, Centre for Extended Learning, Waterloo, Ontario, Canada, N2L 3G1 or [extendedlearning@uwaterloo.ca](mailto:extendedlearning@uwaterloo.ca).

# Territorial Acknowledgement

We acknowledge that the University of Waterloo is located on the traditional territory of the Neutral, Anishnaabeg and Haudenosaunee people. The University of Waterloo is situated on the Haldimand Tract, the land promised to the Six Nations that includes ten kilometres on each side of the Grand River.