

# Environmental Reserve Research and Technology Park Functional Study and Preliminary Design

## ECOLOGICAL FEATURES

The ecological features associated with the Laurel Creek corridor are the floodplain, a portion of the provincially significant wetland complex (Sunfish Lake/Laurel Creek Wetland Complex), lowland vegetation communities (woodlots, riparian zones) and Columbia Lake. The other open space land uses that are associated with the stream corridor and form part of the Environmental Reserve study area include small remnant woodlots, hedgerows and successional old fields. The open space area is heavily utilized for passive recreation activities supported by a network of formal and informal pathways.

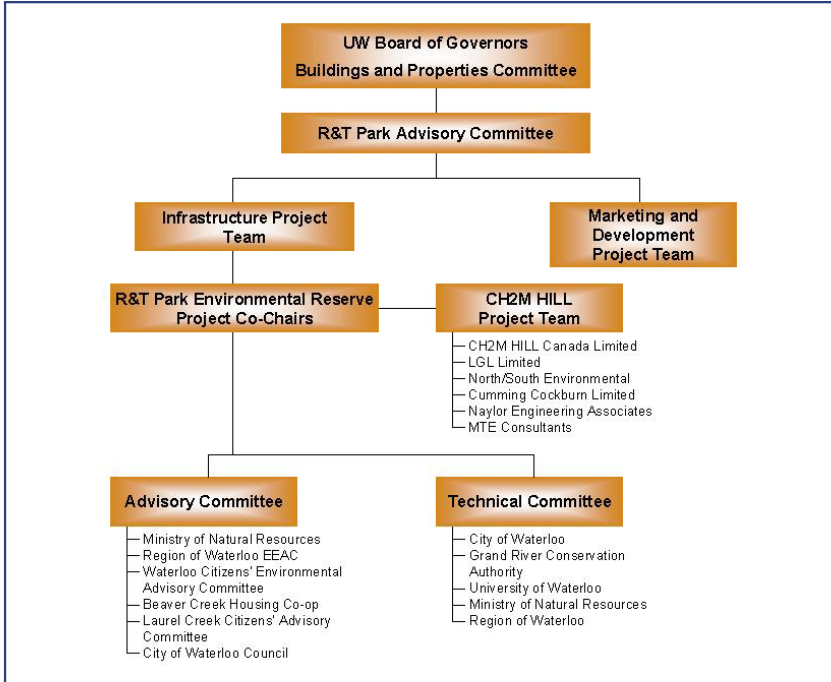
### Ecological Features



Geese on Columbia Lake Shoreline

# Environmental Reserve Research and Technology Park Functional Study and Preliminary Design

## PROJECT ORGANIZATION



**Estimate of Project Schedule**

Description	Months																	
	March	April	May	June	July	August	September	October	November	December	January	February	March	April	May	June	July	
<b>Technical Project Tasks</b>																		
Proposal Submission																		
Information Presentation (and register)																		
Project Award																		
Task 1: Background Information Collection and Review																		
Task 2: Site Inventory																		
Task 3: Hydrogeology																		
Task 4: Hydrology and Hydrology																		
Task 5: Definition of Objectives and Constraints																		
Task 6: Impact Assessment																		
Task 7: Evaluation of Alternatives																		
Task 8: Selection and detailed Analysis of Preferred Alternative																		
Task 9: Preliminary Design																		
Task 10: Final Report																		
<b>Meetings</b>																		
Project Startup																		
Program Meeting																		
Program Meeting																		
Selected Plan Review meeting																		
<b>Open Houses</b>																		
Open House No. 1																		
Open House No. 2																		
<b>Reports</b>																		
<b>Background review</b>																		
Open House Presentation Materials																		
Interim Report																		
Interim Report Summary																		
Final Draft Final Report																		
Second Draft Final Report																		
Final Report																		
Program Reports																		
Technical Committee Meetings																		

Note: █ Refers to Initial Data Collection Contract



