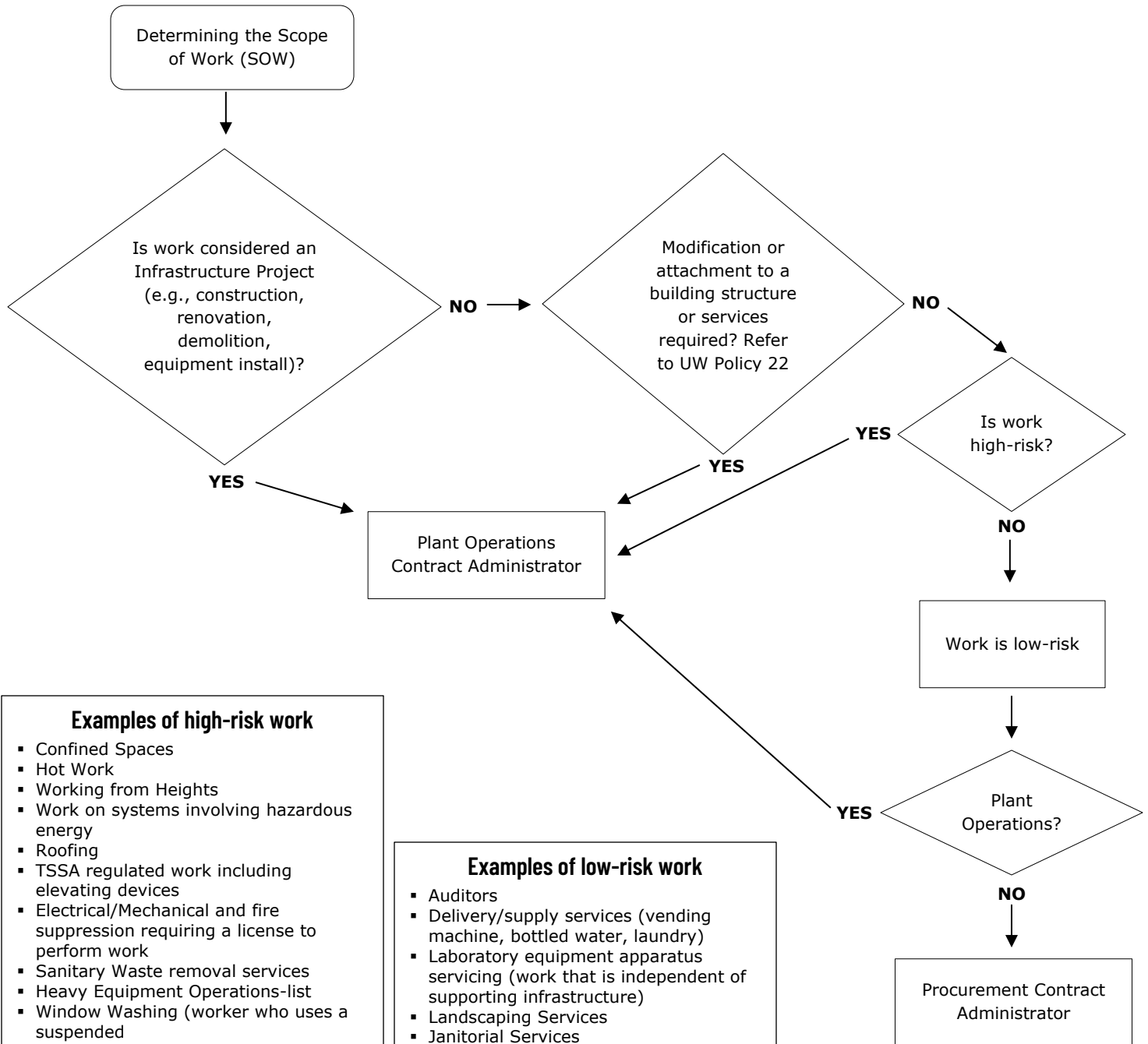


Low/High Risk Service Provider/Contractor Flowchart



- Examples of high-risk work**
- Confined Spaces
 - Hot Work
 - Working from Heights
 - Work on systems involving hazardous energy
 - Roofing
 - TSSA regulated work including elevating devices
 - Electrical/Mechanical and fire suppression requiring a license to perform work
 - Sanitary Waste removal services
 - Heavy Equipment Operations-list
 - Window Washing (worker who uses a suspended scaffold, boatswain)
 - Environmental Abatement
 - Craning of Materials/equipment
 - Hazardous Waste Handling/Transport
 - Trenching and Excavation
 - Hoisting and Rigging
 - Traffic Control
 - Equipment Installations
 - Painting

- Examples of low-risk work**
- Auditors
 - Delivery/supply services (vending machine, bottled water, laundry)
 - Laboratory equipment apparatus servicing (work that is independent of supporting infrastructure)
 - Landscaping Services
 - Janitorial Services
 - Municipal waste pick-up
 - Office support and repairs (computers/printers)
 - Off-site repair/fabrication shops
 - Sample pick-up by laboratory/courier
 - Technical representatives
 - Telephone, local municipal utilities
 - Training Services
 - Consultants (Architect/Engineer)