

ENVIRONMENTAL SAFETY FACILITY PHARMACY TRAFFIC FLOW

TRAFFIC FLOW – PHARMACY (PHR 1016)

1. Customer 1 will enter PHR 1819 via the elevator (1823). They will wait until signalled that they can enter, either by a previous customer or by the ESF technician. Once signalled they will enter 1822 via 1821.
2. The Technician will process the solid waste and biowaste. If required, they will provide new containers.
3. The Technician will check the waste profile sheets and process any chemical waste. If required, they will provide new waste containers.
4. Customer will leave via 1908 to the rear door of elevator (1823). If the next customer is waiting customer 1 will indicate that they can enter.

*Refer to Figure 1 below.

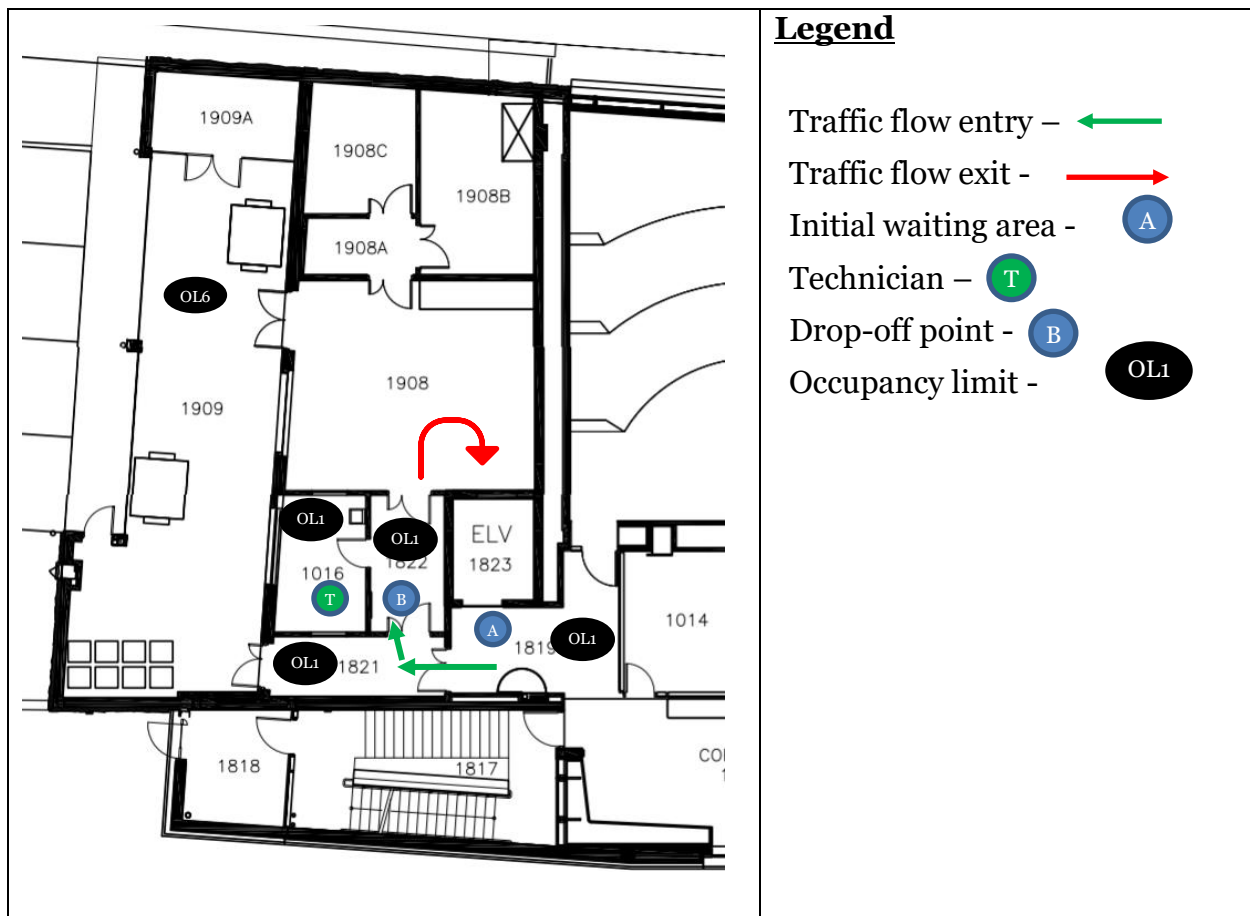


Figure 1: Traffic flow for Pharmacy Satellite waste drop-off location.