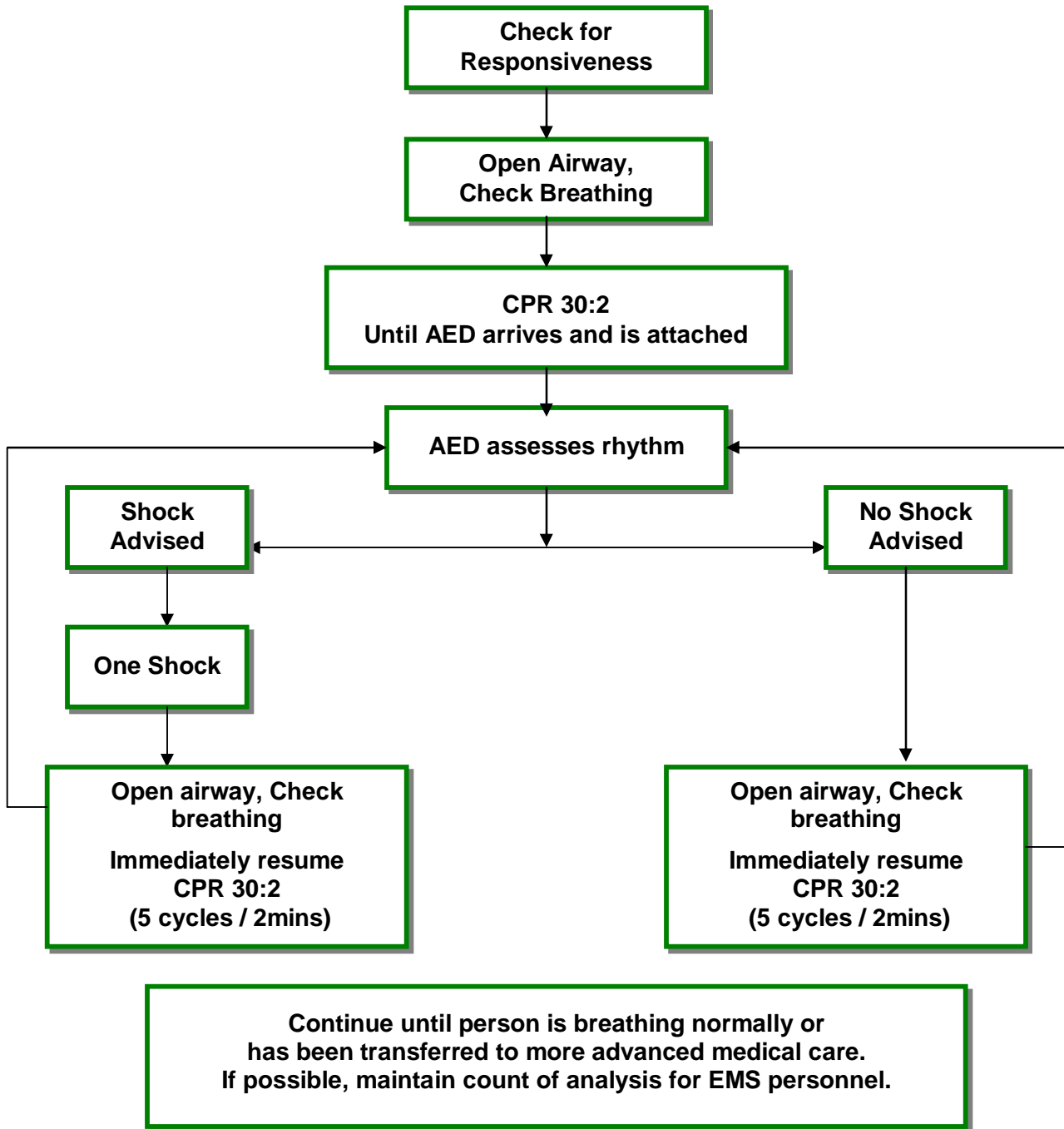


## Canadian Red Cross AED Protocol - Lay Rescuer



**Chest Trauma:** Place electrode pads on the chest if the trauma does not interfere with the placement of electrode pads. If electrode pads cannot be attached then continue CPR until care is transferred to EMS.

**Vomiting during AED:** Leave on AED, clear airway, continue and document if shock was not delivered.