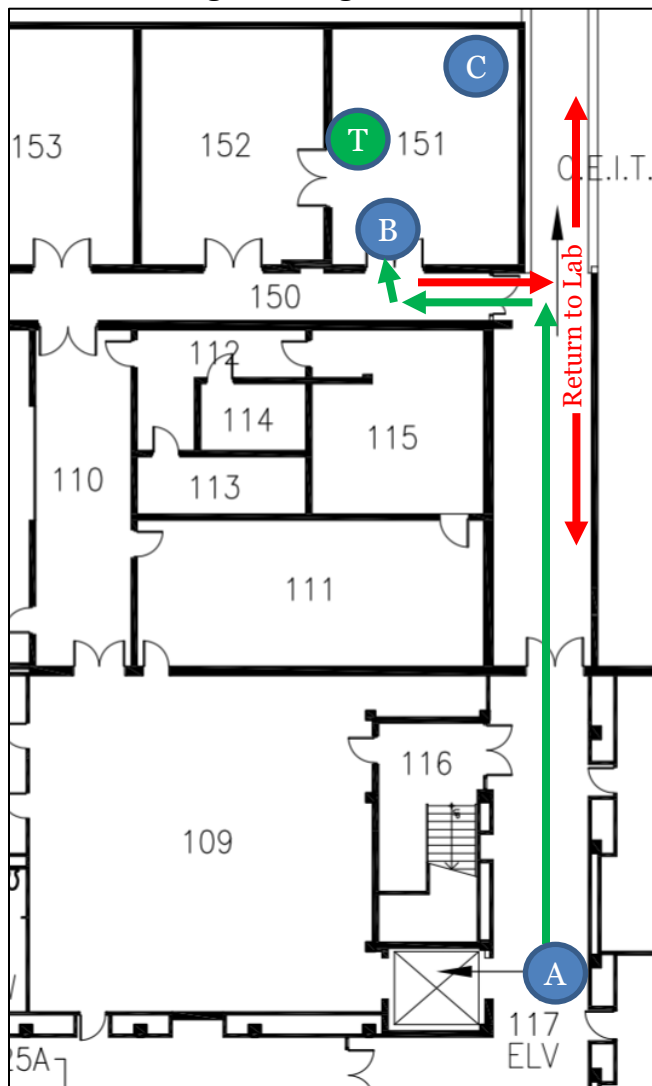


ENVIRONMENTAL SAFETY FACILITY MAIN CAMPUS TRAFFIC FLOW

TRAFFIC FLOW - MAIN CAMPUS

1. Customer will wait in ESC 102 adjacent to the elevator (Location A).
2. Once signalled by a previous user or the ESF technician they will be asked to enter ESC-150.
3. The customer will bring the waste cart to just inside ESC-151 for initial processing (Location B).
4. The Technician will check the waste profile sheets and process any waste. If required, customers can obtain clean empty bottles (Location C).
5. Customer will leave and, if requested by the technician, inform the next user (if one is waiting) to bring their waste in.



Legend

- A Initial Waiting Area
- B Drop Off Point
- C Bottle Pick-Up
- T Technician
- ← Traffic Flow Entry
- Traffic Flow Exit