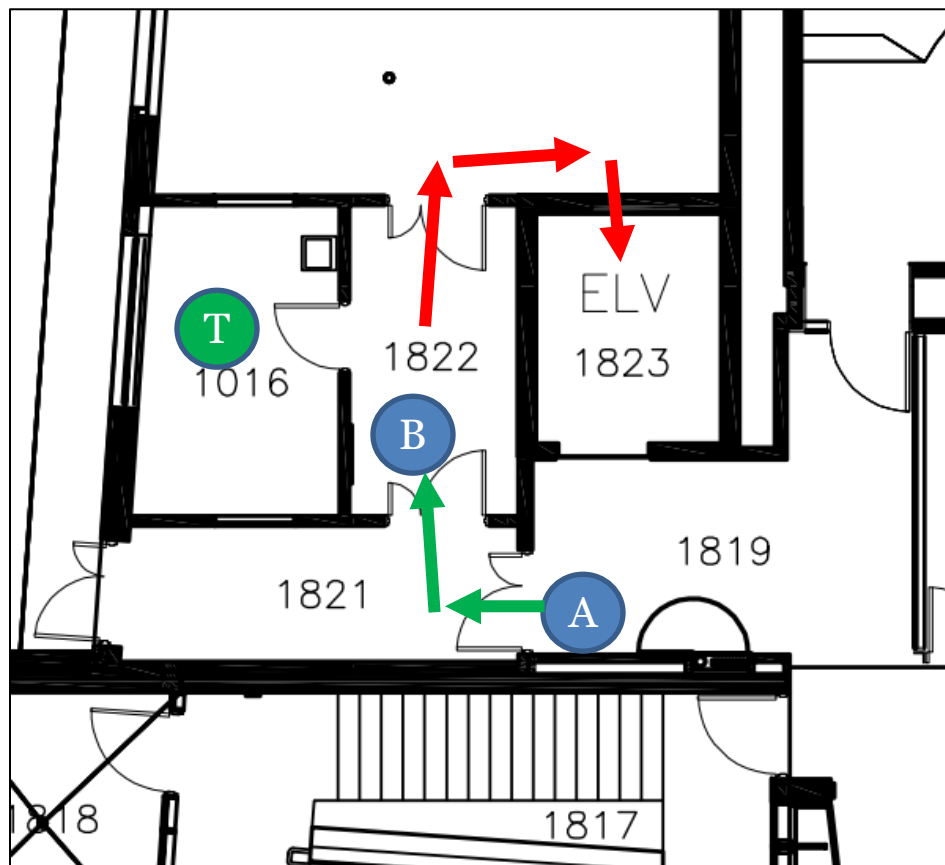


# ENVIRONMENTAL SAFETY FACILITY PHARMACY TRAFFIC FLOW

## TRAFFIC FLOW - PHARMACY (PHR 1016)

1. Customer will enter PHR 1819 via the elevator (1823). They will wait until signalled that they can enter, either by a previous customer or by the ESF technician. Once signalled they will enter 1822 via 1821.
2. The Technician will check the waste profile sheets and process any waste. If required, they will provide new waste containers.
3. Customer will leave via 1908 to the rear door of elevator (1823).



### Legend

- |   |                      |   |                    |
|---|----------------------|---|--------------------|
|  A | Initial Waiting Area |  | Traffic Flow Entry |
|  B | Drop Off Point       |  | Traffic Flow Exit  |
|  T | Technician           |   |                    |