

RADIOLOGICAL WASTE SEGREGATION GUIDANCE

General Rules for Handling and Disposing of Radioactive Wastes

All waste is to be brought to the waste facility per the instructions on the [Hazardous Waste page](#).

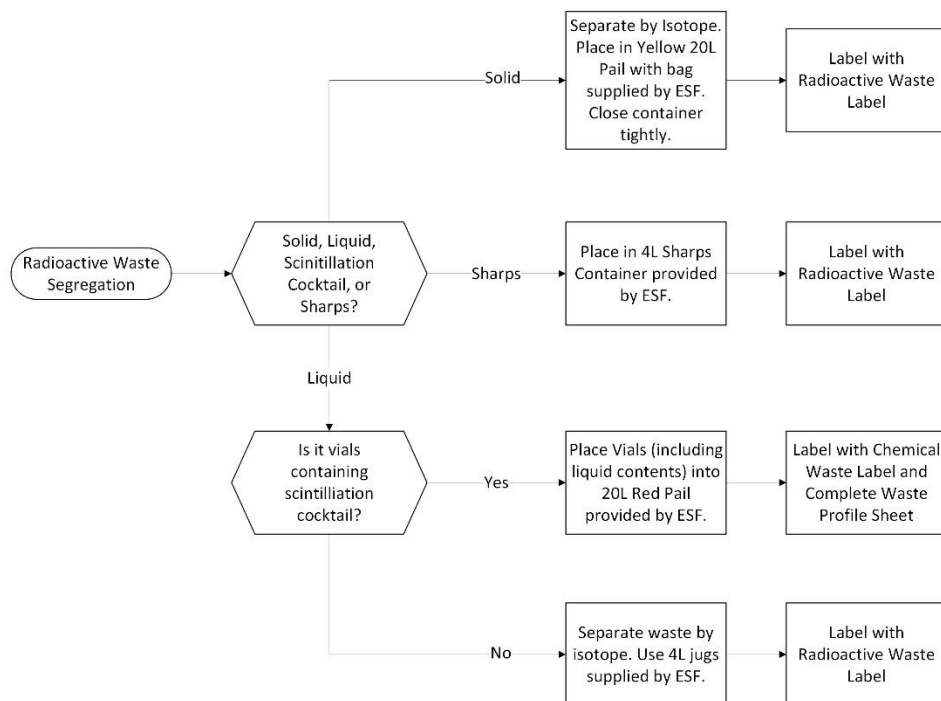
You must use the [Waste Booking Calendar](#) to book an appointment to dispose of waste at our waste facilities.

Follow these guidelines when generating and disposing of wastes:

1. **Segregate** radioactive wastes based on the segregation flowchart in this guideline.
2. **Label** all waste containers with a complete waste label or radioactive waste label (dependent on type).
3. **Ensure** the containers you use are compatible with the wastes you put in them.
4. **Deface** any radioactive labels on your waste (e.g., radioactive tape used on instruments), except the waste label itself. Radioactive tape and other labels may be wrapped in duct tape or covered in marker to deface.

Waste Segregation and Packaging

The flowchart below outlines how radioactive waste can be properly segregated. If after reviewing the flowchart, you are unsure how to classify your waste, please contact the waste facility at esf@uwaterloo.ca.




Packaging Guidance

Liquid Wastes

Follow this process when packaging and segregating liquid radioactive wastes:

1. Separate according to isotope
2. Place in a 4L jug supplied by the Environmental Safety Facility (ESF)
 - Do not fill containers more than 70% full
 - Do not put solid waste in the containers
3. Affix and complete the radioactive waste label as depicted below

Radioactive  Waste	
Dept	<i>Optometry</i>
Name	<i>L. Drolle</i>
Liquid:	Organic <input type="checkbox"/> Aqueous <input checked="" type="checkbox"/>
Solid	<input checked="" type="checkbox"/>
Isotope	<i>I-125</i>
Activity	<i><1 uCi</i>
Amount	<i>3 lbs</i>
Date	<i>November 1, 2022</i>

Check box for solid waste, leave blank for liquid waste

All solid waste on campus unless indicated by RSO will be <1 uCi

Guess the approximate weight

Date that the container is submitted to the waste facility

Solid Wastes

Follow this process when packaging and segregating solid radioactive wastes:

1. **Separate solid waste according to isotope**
2. Place in a yellow 20L pail lined with a 6-mil poly bag supplied by the ESF (see image to the right)
 - Remove or deface any radioactive warning labels on vials or containers prior to disposal
 - Place sharps (e.g., needles, razors) in a separate sharps container (see image to the right)
 - Containers must be closed tightly, and liner bags secured with a twist tie
 - Do not put liquid waste in the containers
3. Mark external containers with a radioactive waste label (see waste label image above)
 - All waste containers, unless otherwise specified by the RSO, may have their activity written as <1 uCi

