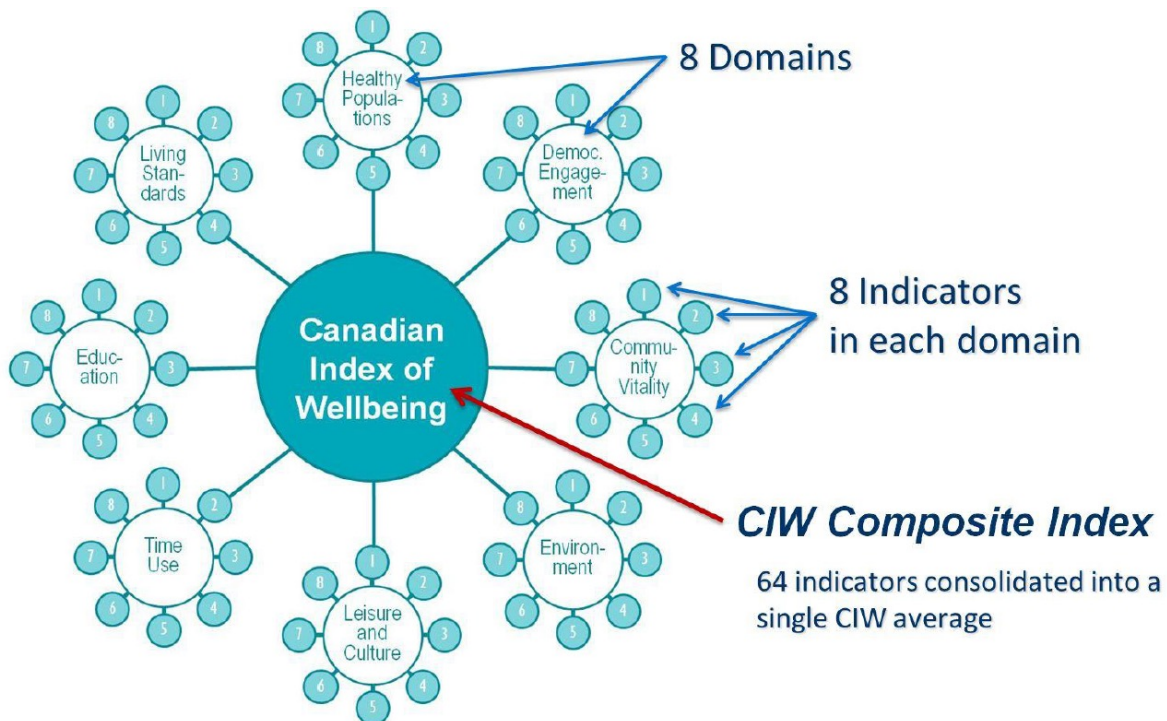


Canadian Index of Wellbeing Framework

The CIW, recognized as a global leader at the forefront of wellbeing international movements and efforts to measure progress in society, has eight domains and sixty-four indicators, the CIW tracks alternative measures of wellbeing over time in relations to economic progress in Canada. The CIW has published two national reports with many provincial and municipal initiatives in progress.

Framework



Source: Canadian Index of Wellbeing, 2012:13

Domains and indicators

Community Vitality	Education	Healthy Populations	Standard of Living
<p>1) property crime rate per 100,000 population</p> <p>2) % reporting participation in organized activities</p> <p>3) % who provide unpaid help to others on their own</p> <p>4) % reporting very or somewhat strong sense of belong to community</p> <p>5) % who feel safe walking alone after dark</p> <p>6) violent crime rate per 100,00 population</p> <p>7) % with 6 or more close friends</p> <p>8) % who feel that most or many people can be trusted</p>	<p>1) ratio of childcare spaces to children aged 0 to 5 years of age</p> <p>2) % of 35-65 year olds with a university degree</p> <p>3) % of PISA scores explained by socioeconomic background</p> <p>4) ratio of students to educators in public schools</p> <p>5) % of 20-34 year olds in population completing high school</p> <p>6) % of children doing well on five developmental domains</p> <p>7) average of five social and emotion competence scores for 12-13 year olds</p> <p>8) basic knowledge and skills index for 13-15 year olds</p>	<p>1) % of daily or occasional smokers among teens 12-19 years old</p> <p>2) % of adults getting influenza immunizations</p> <p>3) % rating patient health services as excellent or good</p> <p>4) life expectancy at birth</p> <p>5) % with self reported diabetes</p> <p>6) % self rated health as excellent or very good</p> <p>7) average remaining years expect to be lived in good health, HALE +15</p> <p>8) % with probable depression</p>	<p>1) % of persons in low income</p> <p>2) % of labour force with long term unemployment</p> <p>3) after tax median income of economic families</p> <p>4) % of labour force employed</p> <p>5) Royal Bank of Canada housing affordability index</p> <p>6) Scaled value of Centre for the study of Living Standards (CSLS) economic security index</p> <p>7) Ratio of top to bottom quintile of economic families after tax</p> <p>8) CIBC index or employment quality</p>

Democratic Engagement	Environment	Leisure and Culture	Time Use
<p>1) % that are not interested in politics at all</p> <p>2) % of women in parliament</p> <p>3) % reporting being very/fairly satisfied with the way democracy works in Canada</p> <p>4) % that strongly agree it is every citizen's duty to vote in federal elections</p> <p>5) ratio of registered to eligible voters</p> <p>6) net official development aid as a percentage of Gross National Income</p> <p>7) % of voter turnout at federal elections</p> <p>8) % with a great deal or quite a lot of confidence in federal parliament</p>	<p>1) primary energy production</p> <p>2) water yield in southern Canada</p> <p>3) viable metal reserves index</p> <p>4) canadian living planet index</p> <p>5) ecological footprint</p> <p>6) absolute greenhouse gas emissions</p> <p>7) ground level ozone (population weighted in ppb)</p> <p>8) marine trophic index</p>	<p>1) Average monthly frequency of participation in physical activity over 15 minutes</p> <p>2) average number of nights away per trip in past year on vacations or 80km from home</p> <p>3) average visitation per site in past year to all national parks and national historic site</p> <p>4) average number of hours in the past year spent volunteering for culture and recreation organizations</p> <p>5) Average % of time spent on the previous day in social leisure activities</p> <p>6) Average attendance per performance in the past year at all performing arts</p> <p>7) average % of time spend on the pervious day in arts and culture activities</p> <p>8) expenditures in the</p>	<p>1) % of labour force participants working more than 50 hours per week</p> <p>2) % of individuals working for pay with flexible work hours</p> <p>3) % of 65 years and older reporting annual formal volunteering activities</p> <p>4) % 3-5 year olds read to daily by parents</p> <p>5) Mean workday commute time for individuals working for pay</p> <p>6) % of 65 years and older reporting daily active leisure activities</p> <p>7) % of 20-64 year olds giving unpaid care to seniors</p> <p>8) % of 20-64 year olds reporting high levels of time pressure</p>