



UNITED NATIONS
UNIVERSITY

UNU-INWEH

Institute for Water,
Environment and Health

The United Nations University Institute for Water, Environment and Health



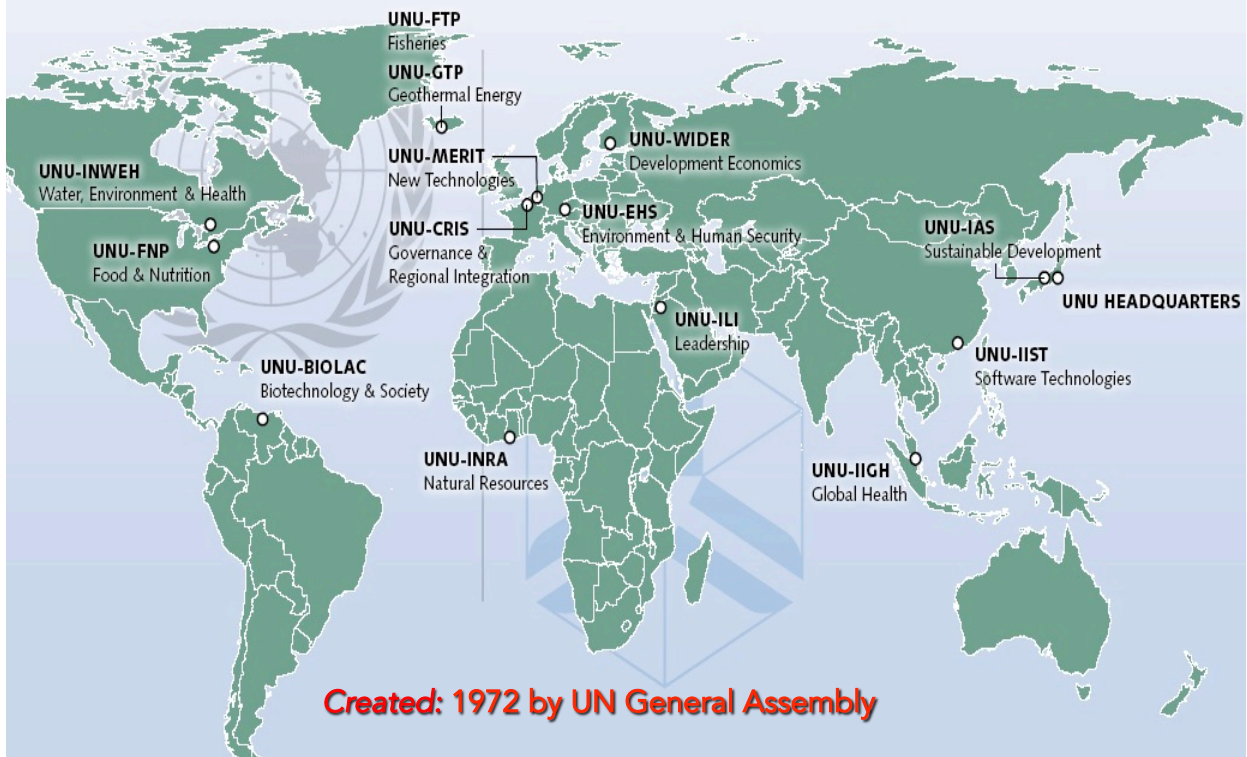
UNU's Global Network



UNITED NATIONS
UNIVERSITY

UNU-INWEH

Institute for Water





Vision:

A world free of water problems where sustainable human development and environmental health and security are assured for all

Mission Statement:

To help resolve pressing water challenges that are of concern to the United Nations, its Member States, and their people, through knowledge-based synthesis of existing bodies of scientific discovery; through cutting-edge targeted research that identifies emerging policy issues; through application of on-the-ground scalable solutions based on credible research; and, through relevant and targeted public outreach.





UNITED NATIONS
UNIVERSITY

UNU-INWEH

Institute for Water,
Environment and Health

Innovations in Capacity Building

Water Learning Centre

- State of the art in e-Learning - 10-course diploma
- Regional centres: Middle East (Arabian Gulf U.); East Africa (U. Nairobi)
Central America (CATHALAC); East Asia (AIT)



Water Without Borders

- Joint graduate level programme w/ McMaster University
- Exposure to global challenges and international research projects/networks



Sustainable Management of Marginal Drylands

- Burkina Faso, China, Tunisia, Egypt, Iran, India, Tunisia, Pakistan, Jordan, Bolivia
- Focus on drylands: Poverty reduction through innovative livelihoods
- Reduced vulnerability through South-South learning



Wellbeing @ INWEH



UNITED NATIONS
UNIVERSITY

UNU-INWEH

Institute for Water,
Environment and Health

❖ Water Security

- ❖ Role in ensuring long-term peace, security and political stability
- ❖ Global agenda
- ❖ Transboundary settings
- ❖ Governance in the Indus Basin
- ❖ UN Water TF



Wellbeing @ INWEH



UNITED NATIONS
UNIVERSITY

UNU-INWEH

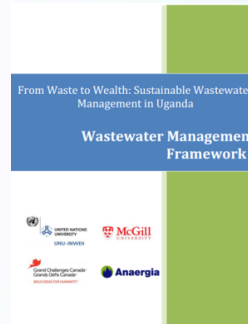
Institute for Water,
Environment and Health

❖ Innovative Wastewater Management

- ❖ Capacity building
- ❖ Innovative financing
- ❖ Reuse

❖ Economics of Water and Land

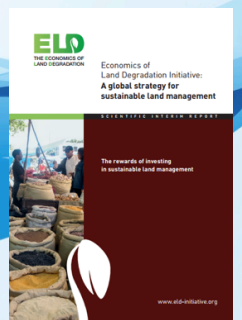
- ❖ Land degradation
- ❖ Payment for ecosystem services



Global, regional, and country level need for data on wastewater generation, treatment, and use (2013)



Health implications for children in wastewater-irrigated peri-urban Aleppo, Syria (2012)



Wellbeing @ INWEH



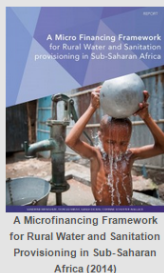
UNITED NATIONS
UNIVERSITY

UNU-INWEH

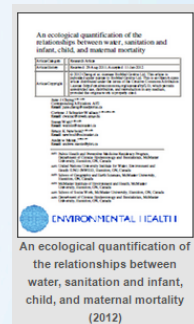
Institute for Water,
Environment and Health

❖ WaSH and Wellbeing

- ❖ Rural, remote and otherwise marginalised communities
- ❖ East Africa
- ❖ Indigenous
- ❖ Tools for evidence-informed decision-making / KAPE & WADI
- ❖ UN Water TPA



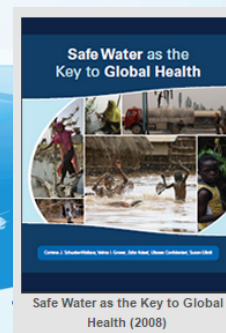
A Microfinancing Framework for Rural Water and Sanitation Provisioning in Sub-Saharan Africa (2014)



An ecological quantification of the relationships between water, sanitation and infant, child, and maternal mortality (2012)



Data Integration at the Water-Health Nexus (2011)



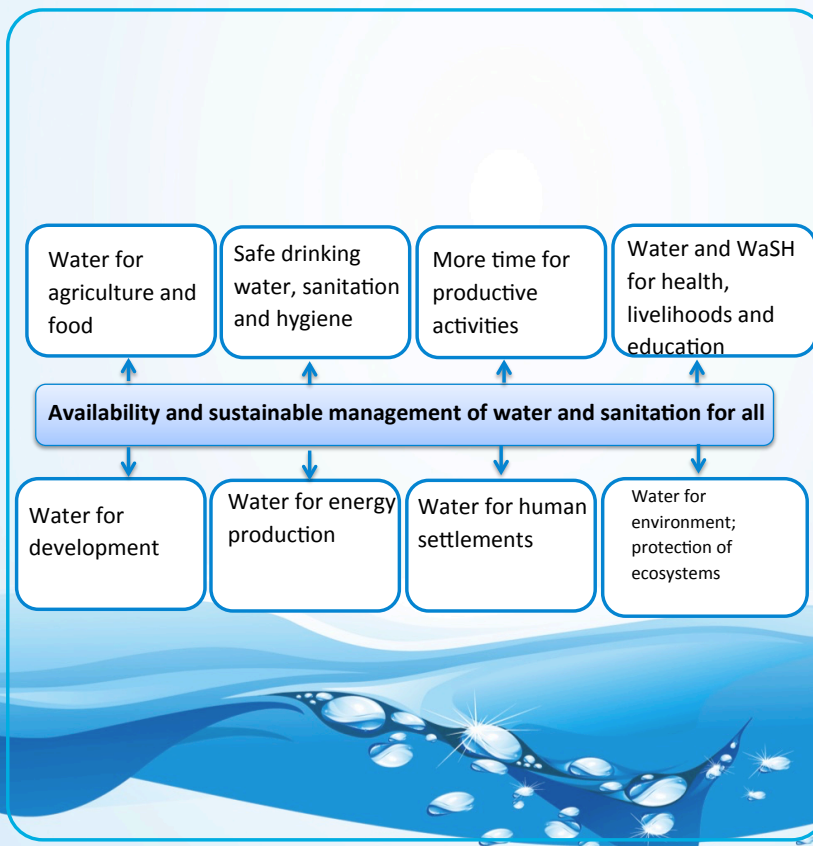
Safe Water as the Key to Global Health (2008)



UNITED NATIONS UNIVERSITY

UNU-INWEH

Institute for Water, Environment and Health



Land degradation

Urbanisation

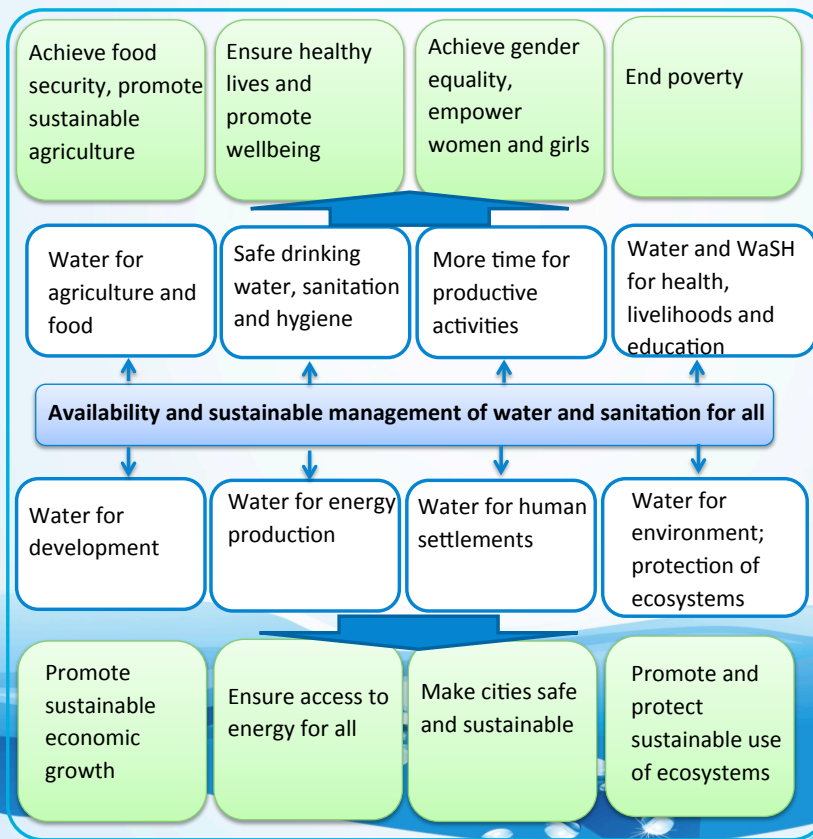
Climate change



UNITED NATIONS UNIVERSITY

UNU-INWEH

Institute for Water, Environment and Health



Land degradation

Urbanisation

Climate change



UNITED NATIONS
UNIVERSITY

UNU-INWEH

Institute for Water,
Environment and Health

Thank you

corinne.schusterwallace@unu.edu



UNITED NATIONS
UNIVERSITY

UNU-INWEH

Institute for Water,
Environment and Health

INWEH's Core Functions

Knowledge-Based Synthesis:

- Generating new knowledge: cutting-edge applied research & scientific discovery
- Advancing knowledge management, translation and brokering via a research networks
- Mobilizing communities of practice

Research-policy bridging:

- Creating and identifying holistic policy solutions for water-related challenges
- Diagnose emerging policy problems and develop solutions
- Translate policies across a range of scales

Application & Implementation:

- Applying on-the-ground, scalable water solutions
- Working with communities and institutions to enhance their capacity to understand, analyze and respond to their water challenges
- Development of research and training institutions in developing countries

